

County of Riverside



Registrar of Voters

Polling Place Location
on Back Cover
Polls Open
March 3, 2020
7:00 a.m. to 8:00 p.m.

.....
Registration Deadline
To Vote or Change
Political Party
Preference
February 17, 2020

Additional Information Inside
.....

Quick • Easy • Convenient
Vote-By-Mail
February 3rd - February 25th
Application on Back Cover

AVISO IMPORTANTE
Una traducción en Español de
esta Guía de Información del
Condado Para el Votante puede
obtenerse en la oficina del Registro
de Votantes llamando al (951) 486- 7200
o (800) 773-VOTE (8683) o visite nuestro
sitio web www.voteinfo.net

Consolidated Presidential Primary Election

Tuesday, March 3, 2020
County Voter Information Guide

This booklet contains all political party preferences,
please check the back cover for your party preference.



COUNTY OF RIVERSIDE REGISTRAR OF VOTERS
2720 Gateway Drive, Riverside, CA 92507-0918 • (951) 486-7200 • (800) 773-VOTE (8683) • TTY (951) 697-8966
Mailing Address: 2724 Gateway Drive, Riverside, CA 92507-0918
www.voteinfo.net

Election **REMINDER**

Elections in California

There are two different types of primary elections in California. The results of the primary election determine the candidates who will run in the general election in November. The types of primary elections are:

Presidential (Party-Nominated/Partisan Office)

- Office on the ballot: U.S. President
- Who can vote: Only voters who registered with the same political party as the candidate (the Democratic, American Independent, and Libertarian parties allow voters who registered with no party preference to vote in their primary).
- Result: The candidate who moves on to the general election is the candidate nominated by their national political party and may not be the candidate that was elected by popular vote in the California primary election.

California Open Primary (Voter-Nominated Offices)

- Offices on the ballot: U.S. Senate, U.S. House of Representatives, statewide offices, and state legislative offices
- Who can vote: Any voter may vote for any one candidate in each contest, regardless of party preference.
- Result: The top-two candidates, regardless of party preference, who receive the most votes in each primary contest move on to the general election. After a top-two primary, a general election must be held even if one candidate receives a majority of the vote (at least 50 percent +1) and even if there is only one candidate in the primary election.

California's open primary system does not apply to candidates running for U.S. President, County Central Committee, or local offices. Non-partisan offices (such as judges, county supervisors, city council members, and school board members) remain open to all eligible voters.

Get out of line on Election Day!



VOTE-BY-MAIL

Quick, easy, convenient...
from the comfort of your home!
See application on back cover

VOTE EARLY

Riverside County
Registrar of Voters Office
See inside for additional locations and information

REBECCA SPENCER
Registrar of Voters



ART TINOCO
Assistant Registrar of Voters

REGISTRAR OF VOTERS
COUNTY OF RIVERSIDE

Dear Voter:

March 3, 2020 is Election Day. This County Voter Information Guide provides ballot marking instructions, polling place location, candidate information, and other important election details that you should review before you vote. You may mark your selections on your Sample Ballot and take it with you to the polls for easy reference.

You have several options for voting:

Vote-by-Mail – Voting by mail is convenient and easy. You will find an application to receive a Vote-by-Mail ballot on the back cover of this pamphlet. The deadline to request a Vote-by-Mail ballot is February 25. You have several options for returning your ballot:

- Mail your ballot in time to reach the Registrar of Voters Office by 8:00 p.m. on Election Day, or be postmarked on or before Election Day and received no later than three days after Election Day to be counted.
- Return your ballot in person to the Registrar of Voters Office during regular business hours and until close of polls on Election Day. For your convenience the Registrar's office has a secure locked drop box at its entry for ballot drop off 24 hours a day.
- Deposit your ballot in one of the secure drop-off boxes available at designated City Clerks' Offices from February 3 through March 2. Please visit our website to view a map of ballot drop-off locations.
- Take your ballot to any polling place, vote center, or ballot drop-off location within the state no later than the close of the polls on Election Day.
- You may confirm that the Registrar of Voters Office has received your returned Vote-by-Mail ballot on our website at www.voteinfo.net.
- **Vote First, Count First!** Vote-by-Mail ballots received before Election Day are counted first. Return your ballot as soon as possible to ensure that it is included in the first Election Night results!

Early Voting – Vote at the Registrar of Voters Office beginning February 3 - March 2 (excluding Holidays), Monday through Friday, 8:00 a.m. to 5:00 p.m.; Saturday, February 22 and February 29, 9:00 a.m. to 4:00 p.m.; and Election Day, March 3, 7:00 a.m. to 8:00 p.m. Please visit our website at www.voteinfo.net for additional early voting locations and information.

Vote on Election Day March 3 – See the back cover of this Voter Information Guide for your Polling Place location.

Please note that the registration deadline to vote or change your political party preference is February 17, 2020. Since this deadline falls on a State Holiday it is extended to the next business day.

Have you considered participating in the Electoral process? We need you to volunteer to work the polls on Election Day! We are eager to train you to assist voters with their fundamental right to vote. Please contact us for more information.

The Registrar of Voters team is here to serve you. Please contact us anytime, so we can help make your voting experience a positive one. Thank you for participating in this election – your vote counts!

Sincerely,

REBECCA SPENCER
Registrar of Voters



Be sure to follow the Registrar of Voters on
Facebook, YouTube and Twitter.

Elections in California

The Top Two Candidates Open Primary Act requires that all candidates for a voter-nominated office be listed on the same ballot. Previously known as partisan offices, voter-nominated offices include state legislative offices, U.S. congressional offices, and state constitutional offices.

In both the open primary and general elections, you can vote for any candidate regardless of what party preference you indicated on your voter registration form. In the primary election, the two candidates receiving the most votes—regardless of party preference—move on to the general election. If a candidate receives a majority of the vote (at least 50 percent +1), a general election still must be held.

California's open primary system does not apply to candidates running for U.S. President, county central committee, or local offices.

Write-in candidates for voter-nominated offices can still run in the primary election. However, a write-in candidate can only move on to the general election if the candidate is one of the top two vote-getters in the primary election. Additionally, there is no independent nomination process for a general election.

Superintendent of Public Instruction is a nonpartisan office. If a candidate for Superintendent of Public Instruction were to receive a majority of the vote (at least 50 percent +1) at the primary election, then that candidate would be elected, and no general election would be held. Additional information on nonpartisan offices can be found below.

California law requires the following information to be printed in this guide.

Party-Nominated/Partisan Offices

Political parties may formally nominate candidates for party-nominated/partisan offices at the primary election. A nominated candidate will represent that party as its official candidate for the specific office at the general election and the ballot will reflect an official designation. The top vote-getter for each party at the primary election moves on to the general election. Parties also elect officers of county central committees at the primary election.

A voter can only vote in the primary election of the political party he or she has disclosed a preference for upon registering to vote. However, a political party may allow a person who has declined to disclose a party preference to vote in that party's primary election.

Voter-Nominated Offices

Political parties are not entitled to formally nominate candidates for voter-nominated offices at the primary election. A candidate nominated for a voter-nominated office at the primary election is the nominee of the people and not the official nominee of any party at the general election. A candidate for nomination to a voter-nominated office shall have his or her qualified party preference, or lack of qualified party preference, stated on the ballot, but the party preference designation is selected solely by the candidate and is shown for the information of the voters only. It does not mean the candidate is nominated or endorsed by the party designated, or that there is an affiliation between the party and candidate, and no candidate nominated by the voters shall be deemed to be the officially nominated candidate of any political party. In the county Voter Information Guide, parties may list the candidates for voter-nominated offices who have received the party's official endorsement.

Any voter may vote for any candidate for a voter-nominated office, if they meet the other qualifications required to vote for that office. The top two vote-getters at the primary election move on to the general election for the voter-nominated office even if both candidates have specified the same party preference designation. No party is entitled to have a candidate with its party preference designation move on to the general election, unless the candidate is one of the two highest vote-getters at the primary election.

Nonpartisan Offices

Political parties are not entitled to nominate candidates for nonpartisan offices at the primary election, and a candidate at the primary election is not the official nominee of any party for the specific office at the general election. A candidate for nomination to a nonpartisan office may not designate his or her party preference, or lack of party preference, on the ballot. The top two vote-getters at the primary election move on to the general election for the nonpartisan office.

HOW TO USE THIS SAMPLE BALLOT

1. **POLITICAL PARTY PREFERENCE:** If you are not sure about your political party preference, look at the front of this booklet or at the address label on the back cover. You may also check your political party preference on our website at www.voteinfo.net or by calling (951) 486-7200. If you chose a political party preference when registering to vote you will be issued an official ballot which will include that political party's U.S. Presidential and central committee candidates. Voter-Nominated and Nonpartisan contests will also be included.
2. **NO PARTY PREFERENCE AND NONPARTISAN:** If you did not indicate a political party preference or you registered with an unqualified political party, then you will be issued the **No Party Preference / Nonpartisan** ballot. Your ballot will include congressional, state legislative, and nonpartisan contests, **not U.S. Presidential Candidates**. However, for this election, three parties are allowing cross over voting for their Presidential Candidates. You may request one of the following ballots:

American Independent Party

Democratic Party

Libertarian Party

3. PARTISAN OFFICES IN THE SAMPLE BALLOT

Look at the sample ballot pages that follow. Find the sample ballot pages for the appropriate political party, in order to review your official ballot choices for partisan offices. If you are a no party preference voter and you choose to vote the nonpartisan ballot, you will not find any of the presidential candidates on your ballot.

4. VOTER-NOMINATED AND NONPARTISAN SAMPLE BALLOT PAGES

All voters are eligible to vote on the voter-nominated and nonpartisan portion of the ballot. Following the party sample ballot pages are the voter-nominated and nonpartisan offices, and state and local propositions and measures. The exact issues and offices on your ballot correspond to the location of your residence address, according to what jurisdictions have seats to fill and/or questions to ask.

HOW TO MARK YOUR PAPER BALLOT

Please refer to the following instructions on how to properly complete your Official Ballot:

- Completely fill in the oval next to your choice, like the example provided. Check both front and back of ballot for voting contests.
- Use a black ink pen or marker. Do not use red ink.
- Completely filling in the oval is preferred.
- Vote for no more than the number of votes allowed in each contest (e.g., vote for one, vote for no more than two, etc.).
- Please keep the ballot folded the same way as you received it.

**TO MARK YOUR VOTE
FILL IN THE OVAL**



VOTE!!!

For a demonstration on marking your ballot, please visit our website at www.voteinfo.net

SAMPLE BALLOT / BOLETA DE MUESTRA

CONSOLIDATED PRESIDENTIAL PRIMARY ELECTION / ELECCIÓN PRIMARIA PRESIDENCIAL CONSOLIDADA

March 3, 2020 / 3 de marzo de 2020

Mark your choices on your Sample Ballot, then refer to it when you vote / Marque sus opciones en su Boleta de Muestra, luego refiérase a esta cuando esté votando

DEMOCRATIC PARTY / PARTIDO DEMÓCRATA

No Party Preference / Nonpartisan Voters may request a DEMOCRATIC PARTY Ballot.
Please note you will not be allowed to vote for Members of their Central Committee.

Los Votantes Sin Preferencia de Partido / No Partidistas pueden solicitar una Boleta
para el PARTIDO DEMÓCRATA.

Por favor tome en cuenta que usted no podrá votar por los Miembros de su Comité Central.

FIND YOUR PARTY
on this page or the following pages
ENCUENTRE SU PARTIDO
en esta página o en las siguientes páginas

PARTY-NOMINATED OFFICES
CARGOS NOMINADOS POR LOS PARTIDOS
PRESIDENT OF THE UNITED STATES
PRESIDENTE DE LOS ESTADOS UNIDOS

Presidential Preference
Preferencia Presidencial

Vote for One / Vote por Uno

MARK STEWART GREENSTEIN

JULIÁN CASTRO

MICHAEL A. ELLINGER

ELIZABETH WARREN

MARIANNE WILLIAMSON

ANDREW YANG

ROQUE "ROCKY" DE LA FUENTE III

JOHN K. DELANEY

AMY KLOBUCHAR

BERNIE SANDERS

JOE SESTAK

TOM STEYER

DEVAL PATRICK

MICHAEL BENNET

MICHAEL R. BLOOMBERG

MOSIE BOYD

CORY BOOKER

PETE BUTTIGIEG

JOSEPH R. BIDEN

TULSI GABBARD



SAMPLE BALLOT / BOLETA DE MUESTRA

CONSOLIDATED PRESIDENTIAL PRIMARY ELECTION / ELECCIÓN PRIMARIA PRESIDENCIAL CONSOLIDADA

March 3, 2020 / 3 de marzo de 2020

Mark your choices on your Sample Ballot, then refer to it when you vote / Marque sus opciones en su Boleta de Muestra, luego refiérase a esta cuando esté votando

REPUBLICAN PARTY / PARTIDO REPUBLICANO

FIND YOUR PARTY
on this page or the following pages
ENCUENTRE SU PARTIDO
en esta página o en las siguientes páginas

**PARTY-NOMINATED OFFICES
CARGOS NOMINADOS POR LOS PARTIDOS
PRESIDENT OF THE UNITED STATES
PRESIDENTE DE LOS ESTADOS UNIDOS**

Presidential Preference
Preferencia Presidencial

Vote for One / Vote por Uno

- ROQUE "ROCKY" DE LA FUENTE
- MATTHEW JOHN MATERN
- ZOLTAN G. ISTVAN
- DONALD J. TRUMP
- ROBERT ARDINI
- JOE WALSH
- BILL WELD
-



SAMPLE BALLOT / BOLETA DE MUESTRA

CONSOLIDATED PRESIDENTIAL PRIMARY ELECTION / ELECCIÓN PRIMARIA PRESIDENCIAL CONSOLIDADA

March 3, 2020 / 3 de marzo de 2020

Mark your choices on your Sample Ballot, then refer to it when you vote / Marque sus opciones en su Boleta de Muestra, luego refiérase a esta cuando esté votando

AMERICAN INDEPENDENT PARTY / PARTIDO AMERICANO INDEPENDIENTE

No Party Preference / Nonpartisan Voters may request an
AMERICAN INDEPENDENT PARTY Ballot.

Los Votantes Sin Preferencia de Partido / No Partidistas pueden solicitar una Boleta
para el PARTIDO AMERICANO INDEPENDIENTE.

FIND YOUR PARTY
on this page or the following pages
ENCUENTRE SU PARTIDO
en esta página o en las siguientes páginas

PARTY-NOMINATED OFFICES CARGOS NOMINADOS POR LOS PARTIDOS PRESIDENT OF THE UNITED STATES PRESIDENTE DE LOS ESTADOS UNIDOS
Presidential Preference Preferencia Presidencial Vote for One / Vote por Uno
<input type="radio"/> DON BLANKENSHIP
<input type="radio"/> PHIL COLLINS
<input type="radio"/> ROQUE "ROCKY" DE LA FUENTE
<input type="radio"/> CHARLES KRAUT
<input type="radio"/> J.R. MYERS
<input type="radio"/>



SAMPLE BALLOT / BOLETA DE MUESTRA

CONSOLIDATED PRESIDENTIAL PRIMARY ELECTION / ELECCIÓN PRIMARIA PRESIDENCIAL CONSOLIDADA

March 3, 2020 / 3 de marzo de 2020

Mark your choices on your Sample Ballot, then refer to it when you vote / Marque sus opciones en su Boleta de Muestra, luego refiérase a esta cuando esté votando

GREEN PARTY / PARTIDO VERDE

FIND YOUR PARTY
on this page or the following pages
ENCUENTRE SU PARTIDO
en esta página o en las siguientes páginas

**PARTY-NOMINATED OFFICES
CARGOS NOMINADOS POR LOS PARTIDOS
PRESIDENT OF THE UNITED STATES
PRESIDENTE DE LOS ESTADOS UNIDOS**

**Presidential Candidate Preference
Preferencia de Candidato a Presidente**

Vote for a Candidate / Vote por un Candidato

Delegates to the national convention will be selected after the presidential preference primary election.

Los delegados a la convención nacional serán seleccionados después de la elección primaria de preferencia presidencial.

- SEDINAM MOYOWASIFZA-CURRY
- DAVID ROLDE
- HOWIE HAWKINS
- DARIO HUNTER
- DENNIS LAMBERT
-



SAMPLE BALLOT / BOLETA DE MUESTRA

CONSOLIDATED PRESIDENTIAL PRIMARY ELECTION / ELECCIÓN PRIMARIA PRESIDENCIAL CONSOLIDADA

March 3, 2020 / 3 de marzo de 2020

Mark your choices on your Sample Ballot, then refer to it when you vote / Marque sus opciones en su Boleta de Muestra, luego refiérase a esta cuando esté votando

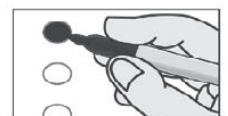
LIBERTARIAN PARTY / PARTIDO LIBERTARIO

No Party Preference / Nonpartisan Voters may request a LIBERTARIAN PARTY Ballot.

Los Votantes Sin Preferencia de Partido / No Partidistas pueden solicitar una Boleta para el PARTIDO LIBERTARIO.

FIND YOUR PARTY
on this page or the following pages
ENCUENTRE SU PARTIDO
en esta página o en las siguientes páginas

PARTY-NOMINATED OFFICES CARGOS NOMINADOS POR LOS PARTIDOS PRESIDENT OF THE UNITED STATES PRESIDENTE DE LOS ESTADOS UNIDOS
Presidential Preference Preferencia Presidencial Vote for One / Vote por Uno
<input type="radio"/> KEENAN WALLACE DUNHAM
<input type="radio"/> ADAM KOKESH
<input type="radio"/> VERMIN SUPREME
<input type="radio"/> JO JORGENSEN
<input type="radio"/> DAN BEHRMAN
<input type="radio"/> ERIK CHASE GERHARDT
<input type="radio"/> KEN ARMSTRONG
<input type="radio"/> MAX ABRAMSON
<input type="radio"/> SAM ROBB
<input type="radio"/> KIM RUFF
<input type="radio"/> STEVEN A RICHEY
<input type="radio"/> JACOB HORNBERGER
<input type="radio"/> SOURAYA FAAS
<input type="radio"/>



SAMPLE BALLOT / BOLETA DE MUESTRA

CONSOLIDATED PRESIDENTIAL PRIMARY ELECTION / ELECCIÓN PRIMARIA PRESIDENCIAL CONSOLIDADA

March 3, 2020 / 3 de marzo de 2020

Mark your choices on your Sample Ballot, then refer to it when you vote / Marque sus opciones en su Boleta de Muestra, luego refiérase a esta cuando esté votando

PEACE AND FREEDOM PARTY / PARTIDO PAZ Y LIBERTAD

FIND YOUR PARTY
on this page or the following pages
ENCUENTRE SU PARTIDO
en esta página o en las siguientes páginas

PARTY-NOMINATED OFFICES
CARGOS NOMINADOS POR LOS PARTIDOS
PRESIDENT OF THE UNITED STATES
PRESIDENTE DE LOS ESTADOS UNIDOS

Presidential Preference
Preferencia Presidencial

Vote for One / Vote por Uno

GLORIA LA RIVA

HOWIE HAWKINS



SAMPLE BALLOT / BOLETA DE MUESTRA

CONSOLIDATED PRESIDENTIAL PRIMARY ELECTION / ELECCIÓN PRIMARIA PRESIDENCIAL CONSOLIDADA

March 3, 2020 / 3 de marzo de 2020

Mark your choices on your Sample Ballot, then refer to it when you vote / Marque sus opciones en su Boleta de Muestra, luego refiérase a esta cuando esté votando

VOTER-NOMINATED AND NONPARTISAN OFFICES / CARGOS NOMINADOS POR LOS VOTANTES Y NO PARTIDISTAS

All voters, regardless of party preference, may vote for any candidate for a voter-nominated or nonpartisan office.

Todo los votantes, sin importar la preferencia de partido, pueden votar por cualquier candidato a un cargo nominado por los votantes o no partidistas.

VOTER-NOMINATED OFFICES CARGOS NOMINADOS POR LOS VOTANTES
UNITED STATES REPRESENTATIVE REPRESENTANTE DE ESTADOS UNIDOS 42nd Congressional District Distrito Congresional Núm. 42 Vote for One / Vote por Uno
<input type="radio"/> WILLIAM "LIAM" O'MARA Party Preference: Democratic Preferencia de Partido: Demócrata University Professor / Historian Profesor universitario / Historiador
<input type="radio"/> REGINA MARSTON Party Preference: Democratic Preferencia de Partido: Demócrata Entrepreneur / Small Businesswoman Empresaria / Pequeña empresaria
<input type="radio"/> KEN CALVERT Party Preference: Republican Preferencia de Partido: Republicano U.S. Representative Representante de EE. UU.
<input type="radio"/>
STATE SENATOR / SENADOR ESTATAL 31st Senatorial District Distrito Senatorial Núm. 31 Vote for One / Vote por Uno
<input type="radio"/> RICHARD D. ROTH Party Preference: Democratic Preferencia de Partido: Demócrata State Senator Senador Estatal
<input type="radio"/>
MEMBER OF THE STATE ASSEMBLY MIEMBRO DE LA ASAMBLEA ESTATAL 60th Assembly District Distrito de la Asamblea Núm. 60 Vote for One / Vote por Uno
<input type="radio"/> CHRIS RAAHAUGE Party Preference: Republican Preferencia de Partido: Republicano Peace Officer Oficial del orden público
<input type="radio"/> SABRINA CERVANTES Party Preference: Democratic Preferencia de Partido: Demócrata California State Assemblymember Miembro de la asamblea estatal de California
<input type="radio"/>

NONPARTISAN OFFICES CARGOS NO PARTIDARIOS
COUNTY / CONDADO County Supervisor, District 1 Supervisor del Condado, Distrito 1 Vote for One / Vote por Uno
<input type="radio"/> DEBBIE WALSH Small Businesswoman Pequeña Empresaria
<input type="radio"/> KEVIN D. JEFFRIES Supervisor / Small Businessman Supervisor / Pequeño Empresario
<input type="radio"/> MELISSA A. BOURBONNAIS Correctional Deputy / Educator Adjunto de Reclusorio / Educadora
<input type="radio"/>



SAMPLE BALLOT / BOLETA DE MUESTRA

CONSOLIDATED PRESIDENTIAL PRIMARY ELECTION / ELECCIÓN PRIMARIA PRESIDENCIAL CONSOLIDADA

March 3, 2020 / 3 de marzo de 2020

Mark your choices on your Sample Ballot, then refer to it when you vote / Marque sus opciones en su Boleta de Muestra, luego refiérase a esta cuando esté votando

VOTER-NOMINATED AND NONPARTISAN OFFICES / CARGOS NOMINADOS POR LOS VOTANTES Y NO PARTIDISTAS

All voters, regardless of party preference, may vote for any candidate for a voter-nominated or nonpartisan office.

Todo los votantes, sin importar la preferencia de partido, pueden votar por cualquier candidato a un cargo nominado por los votantes o no partidistas.

MEASURE(S) SUBMITTED TO THE VOTERS MEDIDA(S) SOMETIDAS A LOS VOTANTES	
STATE / ESTADO	
13	<p>AUTHORIZES BONDS FOR FACILITY REPAIR, CONSTRUCTION, AND MODERNIZATION AT PUBLIC PRESCHOOLS, K-12 SCHOOLS, COMMUNITY COLLEGES, AND UNIVERSITIES. LEGISLATIVE STATUTE. Authorizes \$15 billion in state general obligation bonds for construction and modernization of public education facilities. Fiscal Impact: Increased state costs to repay bonds estimated at about \$740 million per year (including interest) over the next 35 years.</p> <p>AUTORIZA BONOS PARA LA REPARACIÓN, CONSTRUCCIÓN Y MODERNIZACIÓN DE LAS INSTALACIONES DE LAS ESCUELAS PÚBLICAS DE EDUCACIÓN PREESCOLAR, ESCUELAS DE NIVELES K-12, COLEGIOS COMUNITARIOS Y UNIVERSIDADES. ESTÁTUTO LEGISLATIVO. Autoriza \$15 mil millones en bonos de obligación general del estado para la construcción y modernización de instalaciones de educación pública. Impacto fiscal: Se calcula que el aumento de los costos del estado para pagar los bonos es de alrededor de \$740 millones por año (incluidos los intereses) durante los próximos 35 años.</p>
<input type="radio"/> YES / SÍ	
<input type="radio"/> NO / NO	

SCHOOL / ESCOLAR	
RIVERSIDE COMMUNITY COLLEGE DISTRICT DISTRITO DE COLEGIO COMUNITARIO DE RIVERSIDE	
A	<p>MORENO VALLEY/NORCO/RIVERSIDE CITY COLLEGES AFFORDABLE, QUALITY HIGHER EDUCATION, JOB CREATION, CLASSROOM REPAIR MEASURE.</p> <p>To improve classrooms/access for students/Veterans to quality, affordable college education by repairing, constructing/acquiring classrooms, facilities, sites/equipment for science, engineering, technology, healthcare, college/career-training/skilled trades; shall Riverside Community College District's measure authorizing \$715,000,000 in bonds at legal rates, levying 2¢/\$100 assessed valuation (\$42,000,000 annually) while bonds are outstanding, be approved, with citizen oversight/all money locally controlled?</p> <p>MEDIDA PARA OBTENER COLEGIOS DE LA CIUDAD ASEQUIBLES, EDUCACIÓN SUPERIOR DE CALIDAD, REPARACIÓN DE AULAS Y CREACIÓN DE EMPLEOS EN MORENO VALLEY/NORCO/RIVERSIDE. Con el fin de mejorar los salones de clases/acceso para estudiantes/Veteranos a una educación universitaria asequible de calidad, reparando, construyendo/adquiriendo salones de clases, instalaciones, lugares/equipo para ciencias, ingeniería, tecnología, y cuidados de la salud, para carreras universitarias/capacitación de carrera/carreras técnicas; ¿debería el Distrito de Colegio Comunitario de Riverside autorizar \$715,000,000 de dólares en bonos a tasas legales, un gravamen de 2¢/\$100 de valor tasado (\$42,000,000 anuales) mientras los bonos estén pendientes de pago, cuenten con aprobación y supervisión ciudadana manteniendo todo el dinero bajo control local?</p>
<input type="radio"/> BONDS YES / BONOS SÍ	
<input type="radio"/> BONDS NO / BONOS NO	



VOTER'S INFORMATION GUIDE SECTION

The following pages contain voter information applicable to your ballot which may include the following items:

- CANDIDATE STATEMENTS
- BALLOT MEASURES
- ANALYSES
- ARGUMENTS IN SUPPORT & IN OPPOSITION

This guide section may not contain a complete list of candidates. A complete list of candidates appears on the Sample Ballot section of this guide. Each candidate's statement in this guide is volunteered by the candidate and is printed at the expense of the candidate unless otherwise determined by the governing body. Deposit amounts required for publication of candidate statements are listed in the candidate handbook at www.voteinfo.net. Additional candidate statements may be available and viewed at www.voteinfo.net.

Statements made on the following pages represent the views of the authors and are not endorsed by the County of Riverside. Internet website addresses included in any statements are provided by the authors. The County of Riverside assumes no liability for the accuracy or content of websites listed therein.

Arguments in support of or in opposition to the ballot measures are opinions of the authors.

The text, grammar, and spelling are as submitted by the authors.

Campaign Finance Reform

Among all state legislative candidates appearing on ballots in Riverside County, the following persons have pledged to abide by campaign spending limits as specified in the California Government Code. Candidates agreeing to the limits have the opportunity to publish a statement of qualifications in the local County Voter Information Guide. Not all districts will appear on your ballot.

STATE SENATE, 23rd DISTRICT

Lloyd White, Republican
Cristina Puraci, Republican
Rosilicie Ochoa Bogh, Republican

STATE SENATE, 28th DISTRICT

Melissa Melendez, Republican
John Schwab, Republican
Joy Silver, Democratic
Elizabeth Romero, Democratic

STATE ASSEMBLY, 42nd DISTRICT

DeniAntionette Mazingo, Democratic
Chad Mayes, No Party Preference

STATE ASSEMBLY, 56th DISTRICT

Eduardo Garcia, Democratic
America Figueroa, Republican

STATE ASSEMBLY, 60th DISTRICT

Chris Raahauge, Republican
Sabrina Cervantes, Democratic

STATE ASSEMBLY, 61st DISTRICT

Ali Mazarei, Republican
Jose Medina, Democratic

STATE ASSEMBLY, 67th DISTRICT

Jerry Carlos, Democratic
Kelly Seyarto, Republican
Jeremy Smith, Republican
Steve Manos, Republican
Nick Pardue, Republican

STATE ASSEMBLY, 71st DISTRICT

Randy Voepel, Republican
Liz "Elizabeth" Lavertu, Democratic

STATE ASSEMBLY, 75th DISTRICT

Marie Waldron, Republican
Roger Garcia, Democratic
Karen "Kate" Schwartz, Democratic

Party Endorsements – Elections Code § 13302(b)

The County Elections Official shall print a list of all candidates for Voter-Nominated Offices that are endorsed by the following qualified political parties:

AMERICAN INDEPENDENT PARTY

Erin Cruz, United States Representative, 36th District
Ken Calvert, United States Representative, 42nd District
Brian W. Jones, United States Representative, 50th District

DEMOCRATIC PARTY

Raul Ruiz, United States Representative, 36th District
Mark Takano, United States Representative, 41st District
William "Liam" O'Mara, United States Representative, 42nd District
Ammar Campa-Najjar, United States Representative, 50th District
Kris Goodfellow, State Senator, 23rd District
Joy Silver, State Senator, 28th District
Richard D. Roth, State Senator, 31st District
DeniAntionette Mazingo, Member of the State Assembly, 42nd District
Eduardo Garcia, Member of the State Assembly, 56th District
Sabrina Cervantes, Member of the State Assembly, 60th District
Jose Medina, Member of the State Assembly, 61st District
Liz "Elizabeth" Lavertu, Member of the State Assembly, 71st District
Karen "Kate" Schwartz, Member of the State Assembly, 75th District

PEACE & FREEDOM PARTY

Jose Cortes, United States Representative, 50th District

REPUBLICAN PARTY

Aja Smith, United States Representative, 41st District
Ken Calvert, United States Representative, 42nd District
Rosilicie Ochoa Bogh, State Senator, 23rd District
Melissa Melendez, State Senator, 28th District
Andrew F. Kotyuk, Member of the State Assembly, 42nd District
Chris Raahauge, Member of the State Assembly, 60th District
Ali Mazarei, Member of the State Assembly, 61st District
Randy Voepel, Member of the State Assembly, 71st District
Marie Waldron, Member of the State Assembly, 75th District

**CANDIDATE STATEMENT FOR
UNITED STATES REPRESENTATIVE,
42ND CONGRESSIONAL DISTRICT**

KEN CALVERT, Republican

AGE: 66

OCCUPATION: U.S. Representative

EDUCATION AND QUALIFICATIONS:

As a lifelong Inland Empire resident, it is my honor and privilege to represent you in the United States House of Representatives.

My focus is on the issues most important to our community. I am committed to improving our roads so commuters can spend more time with their families. Recently, I worked with local officials to secure a \$50 million federal grant to reduce congestion on our local freeways.

I am concerned by the explosion of homelessness resulting from Democrat policies that essentially legalized drug use and petty theft, making it tougher for communities to address the crisis.

I have delivered essential resources to fight our state's wildfires, create a life-saving earthquake early warning technology, and improve our air quality.

Spurred by lower federal taxes and reduced regulations, our economy has delivered record low unemployment and higher wages. I oppose efforts by Democrats to raise taxes on families to pay for a massive government expansion, including their scheme to force you into government run healthcare.

We must be a nation that enforces the rules of law. I support construction of the border wall and making E-Verify mandatory.

As the top Republican on the Defense Appropriations Subcommittee, I proudly support pay raises for our troops as well as the vital missions at our Navy base in Norco and March Air Reserve Base. We must ensure our military remains the strongest in the world.

I am eager to continue working for you and your family. I humbly ask for your vote.

Ken Calvert
CalvertForCongress.com

**CONTINUED
ON NEXT
PAGE**

**CANDIDATE STATEMENT FOR
UNITED STATES REPRESENTATIVE,
42ND CONGRESSIONAL DISTRICT**

WILLIAM "LIAM" O'MARA, Democratic
OCCUPATION: University Professor / Historian
EDUCATION AND QUALIFICATIONS:

AGE: 45

I'm Liam O'Mara, a former longshoreman and frycook, and currently a professor of history. I do not come from a privileged background, and understand the struggles we face in the Inland Empire.

Wages have been stagnant for decades, the price of housing and of healthcare have skyrocketed, and jobs are being automated away. I am running for Congress because, as a historian, I know how we got here, and what we can do about it.

Expanding roads and freeways can help with traffic, but not solve it -- for that we must develop our local economy. In Congress I will work to help small businesses, to attract new investments, and to get a public university in district to reduce commuter traffic and make more affordable the training we need for the jobs of tomorrow.

We deserve better jobs now, as well, not more warehousing work that will soon be lost to robots. Half the Inland Empire earn less than a living wage, and in Congress I will fight to expand opportunities so that our children have a better future.

We can lower the cost of living and keep more of what we earn, and ensure everyone has adequate healthcare, a good education, and a place to live. We do that by addressing corruption in Washington, and ending policies that have seen the bottom 50% lose a trillion in wealth.

It's time we had a Congressperson to represent all of us, not just a few. I humbly ask for your vote.

William "Liam" O'Mara
www.liamomara.org
facebook.com/liamomaraiv

**CANDIDATE STATEMENT FOR
UNITED STATES REPRESENTATIVE,
42ND CONGRESSIONAL DISTRICT**

REGINA MARSTON, Democratic
OCCUPATION: President
EDUCATION AND QUALIFICATIONS:

AGE: 59

I earned a Bachelor of Science degree in communications from the University of Florida. Over the last 30 years, I have held senior level management roles in health insurance, homebuilding, development & infrastructure, utilities, and clean energy in California, and nationwide. I'm an entrepreneur who has developed solutions to many issues that impact District 42.

My experience taught me valuable negotiating, communication, stakeholder engagement, regulatory, and policymaking skills that I will use in Congress. I understand the importance of having a representative who will work for the "people" when interacting with local, state, and federal government. Many times, government is focused on developing a strong tax base for maintaining the "status quo" and not for the benefit of the community. As the endorsed AFL-CIO candidate, I will be a champion for the people, not the powerful.

CA 42 is the growth center for the next 20+ years. This will mean increased traffic, additional strain on our energy and water infrastructure, a negative impact on our air quality, increased demand on our school districts, and police/fire resources. My vision is to protect the constituents and work with our local, state, and federal governments to create solutions for sustainable growth that don't raise taxes beyond the ability of our residents to pay.

To ensure our region has the resources needed to meet the challenges ahead, we need a leader who has the experience to hit the ground running on day one. Put me to work for you in CA 42. Thank you.

**CANDIDATE STATEMENT FOR
RIVERSIDE COUNTY SUPERVISOR,
DISTRICT 1**

DEBBIE WALSH

OCCUPATION: Small Businesswoman

EDUCATION AND QUALIFICATIONS:

Working to improve Riverside County for over thirty years through volunteerism and direct experience as a County Supervisor's Legislative Assistant.

Homelessness has become a crisis in Riverside County increasing 21% last year alone. As Supervisor, I will work with local, state, and federal officials to reduce crime and homelessness in our neighborhoods.

I will fight for increased funding for Law Enforcement and Fire, work to reduce traffic congestion, promote high paying jobs, increased veterans and senior services, increased school safety, increased after school programs, increased street safety and protecting our environment. I have worked for over twenty-five years to protect our hills, open spaces, green belts and rural communities.

I will continue to fight against massive warehouses next to our homes, schools and playgrounds whose trucks pollute the air we breathe and congest our neighborhood streets and freeways.

I am against adding more toll lanes. We already pay too much. Adding more lanes will not solve the problem. We need real jobs in Riverside County.

I have the education, knowledge and experience to make Riverside County a better place to live, work and play. Working together, we can achieve our priorities and move Riverside County forward.

www.debbiewalshsupervisor.com
951-317-6868

**CANDIDATE STATEMENT FOR
RIVERSIDE COUNTY SUPERVISOR,
DISTRICT 1**

KEVIN D. JEFFRIES

OCCUPATION: County Supervisor / Small Businessman

EDUCATION AND QUALIFICATIONS:

Thank You for letting me fight for you on the Board of Supervisors. I am proud to be an independent voice on behalf of taxpayers, residents, commuters and small businesses.

I have: Refused ALL pay increases
Refused a taxpayer funded pension
Rejected payments to attend other government meetings

Our growing population has created many challenges. Increasing police and fire services is critical to keeping our neighborhoods safe. Our quality of life depends on preserving our parks, trails, and rural communities, improving our overwhelmed roads, supporting our healthcare centers, and making sure we have good paying jobs (not just warehouse jobs).

Recently, I led the effort to shut down a plan to convert our free carpool lanes into expensive toll lanes. We need more capacity, not more tolls and taxes.

Communities and individuals are suffering from our homeless crisis. I support solutions that provide proven results, not larger bureaucracies. We must also protect our neighborhoods from those who refuse to respect our laws.

Riverside County has been my home since 1971. I served 29 years as a volunteer firefighter, raised a family, and built our successful family business here. I'd be honored to continue fighting and working for you.

Kevin Jeffries
www.KEVINJEFFRIES.COM

**CANDIDATE STATEMENT FOR
RIVERSIDE COUNTY SUPERVISOR,
DISTRICT 1**

MELISSA A. BOURBONNAIS

OCCUPATION: Correctional Deputy / Educator

EDUCATION AND QUALIFICATIONS:

I am running for Riverside County Board of Supervisors because I want to improve the quality of life for my family and yours. My diverse scope of professional experience, coupled with my heartfelt passion for public service, makes me uniquely qualified for the position. Twenty-five years ago, my husband and I chose to build our lives in Riverside. We rooted into the community, invested in a home, and raised two children. After graduating from California Baptist University with a political science degree, I worked part-time as an American government professor. This allowed me to develop valuable work experience while being an involved parent. Eventually, I pursued a long-held ambition to join law enforcement and was hired by the Sheriff's Department. This combination of experience, along with my strong work ethic, will ensure that I represent your best interest. Riverside County's most pressing issues, including traffic congestion, homelessness, and crime, are directly impacted by education and law enforcement, areas which I have extensive knowledge. My background equips me with a real-life understanding of issues facing the County and skills to effectively problem solve. I will utilize this diverse spectrum of experience to improve the quality of life in Riverside County.

MEASURE "A" - RIVERSIDE COMMUNITY COLLEGE DISTRICT

FULL TEXT BALLOT PROPOSITION

**MORENO VALLEY COLLEGE, NORCO COLLEGE AND RIVERSIDE CITY COLLEGE
AFFORDABLE, QUALITY HIGHER, EDUCATION, JOB CREATION, CAREER TRAINING
AND CLASSROOM REPAIR MEASURE**

ELECTION MARCH 3, 2020

"MORENO VALLEY/NORCO/RIVERSIDE CITY COLLEGES AFFORDABLE, QUALITY HIGHER EDUCATION, JOB CREATION, CLASSROOM REPAIR MEASURE. To improve classrooms/access for students/Veterans to quality, affordable college education by repairing, constructing/acquiring classrooms, facilities, sites/equipment for science, engineering, technology, healthcare, college/career-training/skilled trades; shall Riverside Community College District's measure authorizing \$715,000,000 in bonds at legal rates, levying 2¢/\$100 assessed valuation (\$42,000,000 annually) while bonds are outstanding, be approved, with citizen oversight/all money locally controlled?"

PROJECTS

The Board of Trustees of the Riverside Community College District, to be responsive to the needs of its community, evaluated Moreno Valley College's, Norco College's, and Riverside City College's urgent and critical facility needs, and their capacity to provide students a well-rounded and **affordable education** and **job training** facilities, and prepare them for success in local jobs and in transferring to four-year universities. Job training and college transfer facilities, **safety** issues, class size and offerings, and information and computer technology were each considered in developing the types of projects to be funded by this measure. In developing the types of projects described herein, job training facilities, facilities supporting **college transfer** and career training classrooms, and the expansion of opportunities for **local students** and **Veterans** to receive an **affordable, high-quality education**, were **prioritized**. If these facility needs are not addressed now, each of Moreno Valley, Norco and Riverside City Colleges would be unable to remain competitive in preparing students for jobs in high demand industries and **transfer to four-year colleges and universities**.

The **Board of Trustees** determines that Riverside Community College District **must**:

- (i) **Maintain classrooms and student service centers by repairing or replacing leaky roofs, old rusty plumbing, and faulty electrical systems;**
- (ii) **Improve student safety and campus security systems, including security cameras, emergency communications systems, smoke detectors, and fire alarms;**
- (iii) **Expand and improve the Veterans Centers at all three campuses, which provide job training, job placement, counseling and support services to military Veterans and their families;**
- (iv) **Upgrade classrooms and labs to help local students complete the first two years of college affordably, and then transfer to the Cal State or UC systems;**
- (v) **Upgrade classrooms and career training facilities for science, technology, engineering, math and computer science.**

The types of projects which are authorized to be undertaken at Moreno Valley College, Norco College and Riverside City College campuses include:

PROVIDE LOCAL STUDENTS AN AFFORDABLE EDUCATION:

**Improvements Needed To Allow Moreno Valley, Norco and Riverside City Colleges
Provide Affordable Job Training and Vocational
Programs Required To Prepare Students For In-Demand Careers**

Goals and Purposes:

Because the cost of attending California's public universities is so expensive, many more local students are starting their education at community colleges. As a result, more students and their families rely on their local community college to save tens of thousands of dollars. This measure will ensure local students have access to an affordable, high-quality education in Riverside County.

Passing this measure will add classrooms, labs and career-training facilities needed to allow both MORENO VALLEY COLLEGE and NORCO COLLEGE to be COMPREHENSIVE colleges, expanding the range of classes, degrees, and career-training courses offered to better serve the needs of local residents.

- Repair or replace aging plumbing systems to prevent flooding and water damage.
- **Improve access to college facilities for students with disabilities.**
- Improve deteriorating gas, electrical, sewer and plumbing lines and systems.
- **Repair or replace leaky roofs.**
- Upgrade classrooms and labs for science, technology, engineering, biotech, and math-related fields.

- Construct new classroom and job training facilities.
- Replace aging internet and electrical wiring.
- **Improve student safety and campus security systems**, including security lighting, cameras, emergency communications systems, smoke detectors, and fire alarms.

PROVIDE JOB TRAINING AND COLLEGE TRANSFER:

**Classroom and Program Improvements To Help Local Students and Veterans
Transfer to Four-Year Universities;
Be Trained For Careers in Healthcare, Engineering, Technology, Law Enforcement and Firefighting**

Goals and Purposes:

Moreno Valley College, Norco College, and Riverside City College each provide essential job training and workforce preparation for students of all ages, military veterans and local residents. The measure would upgrade classrooms, facilities and technology and expand access to training programs that help students learn new skills and find better paying jobs.

Nearly 40% of all local high school graduates rely on our local community colleges for higher education and to prepare for careers. We need to repair and upgrade our local colleges so they can continue to serve our community well for the decades to come.

- Upgrade classrooms and career training facilities for healthcare and nursing.
- **Upgrade classrooms and labs to help local students complete the first two years of college affordably, and transfer to the Cal State or UC systems.**
- Expand and improve the Veteran's Centers at all three campuses, which provide job training, job placement, counseling, and support to military veterans and their families.
- **Construct new or upgrade outdated classrooms, labs, career training facilities, and equipment to keep pace with current industry standards and technology.**
- **Improve classrooms and career training facilities in public safety, fire protection, emergency medical treatment, law enforcement, and physical sciences.**
- Repair deteriorating classrooms and facilities.
- Build new or improve existing facilities for science, technology, engineering, math and computer science instruction and job training.

In addition to the listed types of projects stated above, the types of authorized projects of the measure also include the acquisition of a variety of instructional, maintenance and operational equipment, including interim funding incurred to advance fund projects and the refinancing of outstanding lease obligations, payment of the costs of preparation of all facility planning, fiscal reporting, facility studies, assessment reviews, facility master plan preparation and updates, environmental studies (including environmental investigation, remediation and monitoring), design and construction documentation, project management information systems, permit fees, and temporary housing of dislocated college activities caused by construction projects. In addition to the projects listed above, repair, renovation and construction projects may include, but not be limited to, some or all of the following: renovate student and staff restrooms; replace aging electrical and plumbing systems; repair and replace heating, ventilation and air conditioning systems; install building management and energy management systems; upgrade of facilities for energy efficiencies, including, as an example, the installation of solar panels or arrays, electric charging stations, chiller replacements, and decarbonization programs; repair and replace worn-out and leaky roofs, windows, walls doors and drinking fountains; replace or remove outdated buildings and classrooms and construct new classrooms and support buildings; upgrade wiring and electrical systems to safely accommodate computers, technology and other electrical devices and needs; upgrade facilities to meet current environmental sustainability, State compliance standards and earthquake safety; repair and replace fire alarms, emergency communications and security systems; upgrade, resurface, replacing or relocate hard courts, fields, turf and irrigation systems; replace turf on athletic fields; upgrade classrooms; build new or renovate existing facilities such as science buildings, advanced technology buildings, wellness/allied health facilities, early childhood education center, business and technical support facilities, cosmetology building, emergency operations center, career and technical education buildings, child development center, student and welcome centers, bookstore, parking structures and lots; build new or upgrade sports fields, gymnasiums, athletics complex/stadium, pools, volleyball and tennis courts, and other athletic facilities; upgrade, resurface and recondition existing parking lots, roads and sidewalks; construct or upgrade on-site and off-site roads and roadways and related off-site improvements; improve vehicular access and circulation; improve drop-off zones; repair, upgrade and install interior and exterior lighting systems; replace water lines and valves and sewer lines; construct, upgrade, acquire or expand, multi-use classrooms and labs, swing space, student/learning resources centers, student libraries, planetarium, outdoor classrooms/performance space, fine/ theater and visual arts, music and performing arts facilities, greenhouse, kinesiology buildings, police facilities, field lights, bleachers, press box, track replacement, collaborative office suites and administrative offices, purchasing, warehouse and maintenance facilities, and public safety facilities; improve water conservation and energy efficiency; acquire land; replace existing window systems with energy-efficient systems to reduce costs; improve insulation, weatherproofing and roofs to reduce costs; improve access for the disabled; install and repair fire safety equipment, including alarms, smoke detectors, sprinklers, emergency lighting, and fire safety doors; replace broken concrete walks, deteriorated asphalt; replace/upgrade existing signage to reflect better wayfinding, bells and clocks; replace, modernize and upgrade existing elevator systems; demolition of unsafe or outdated facilities; install or upgrade new security systems, such as security (surveillance) cameras, burglar alarms, handrails, outdoor lighting, fencing, landscaping, gates, gateways and classroom key cards/door locks; replace sewer lines and improve drainage systems to prevent flooding; abate, remove, remediate existing above and below ground hazardous

materials; replace, upgrade, construct, map and improve underground utilities infrastructure and above ground utilities structures; upgrade roadway and pedestrian paths and pathways and bridges for improved safety and access for emergency vehicles, site parking, utilities and grounds. Current priority projects at the three colleges include, at Moreno Valley College, the construction of a library and learning resource center and a biological and physical sciences facility; at Norco College, the construction of STEM buildings, and the reconstruction of the Applied Technology Education Center/Information Technology; and at Riverside City College the construction of a Visual Arts Complex, and an Advanced Technology Building. The upgrading of technology infrastructure includes, but is not limited to, upgrading classroom technology, expanding wireless internet access throughout each college campus, acquire portable interface devices, servers, switches, routers, modules, sound projection systems, information systems, printers, digital white boards, upgrade voice-over-IP, communication systems, audio/visual and telecommunications systems, call manager and network security/ firewall, Internet connectivity, wireless systems, technology infrastructure, and other miscellaneous IT and instructional equipment, DATA storage, fiber/copper infrastructure, phones, identity access cards and the construction and installation of a data center in the cloud for District's enterprise systems, such as resource planning, websites, domain name systems, cloud applications and information security, as well as the necessary software and licenses associated therewith.

The listed projects will be completed as needed. Each project is assumed to include its share of furniture, equipment, architectural, engineering, and similar planning costs, program/project management, staff training expenses, a customary contingency, and costs associated with the Total Cost of Ownership of facilities and equipment. The allocation of bond proceeds may be affected by the final costs of each project. Some projects may be undertaken as joint use or public/private partnership projects in cooperation with other local public, non-profit agencies or other entities. The budget for each project is an estimate and may be affected by factors beyond the District's control. The final cost of each project or decisions will be determined as plans and construction documents are finalized, construction bids are received, construction contracts are awarded and projects are completed. Based on the final budgets of projects or on the then current priorities of the District, certain of the projects described above may be delayed or may not be undertaken. Demolition of existing facilities and reconstruction of facilities scheduled for repair and upgrade may occur, if the Board determines that such an approach would be more cost-effective in creating more enhanced and operationally efficient campuses. Necessary site preparation/restoration, including the acquisition and installation of temporary facilities (swing space) may occur in connection with new construction, renovation or remodeling, or installation or removal of relocatable classrooms, including ingress and egress, removing, replacing, or installing irrigation, utility lines, trees and landscaping, relocating fire access roads, and acquiring any necessary easements, licenses, or rights of way to the property. Proceeds of the bonds may be used to pay or reimburse the District for the cost of District staff when performing work on or necessary and incidental to bond projects. Bond proceeds shall only be expended for the types of projects and purposes identified herein. The District shall create an account into which proceeds of the bonds shall be deposited and comply with the reporting requirements of Government Code Section 53410.

FISCAL ACCOUNTABILITY

This bond measure has strict accountability requirements including:

1. All money will benefit Moreno Valley College, Norco College and Riverside City College and CANNOT BE TAKEN BY THE STATE.
2. NO MONEY can be used for ADMINISTRATOR SALARIES or pensions.
3. Require TAXPAYER OVERSIGHT and yearly audits to ensure all funds are used locally, effectively and as promised.
4. NO ADMINISTRATOR SALARIES. Proceeds from the sale of the bonds authorized by this proposition shall be used only for the acquisition, construction, reconstruction, rehabilitation, or replacement of school facilities, including the furnishing and equipping of school facilities, and not for any other purpose, including teacher, faculty and college administrator salaries, pensions and other operating expenses.
5. **FISCAL ACCOUNTABILITY. THE EXPENDITURE OF BOND MONEY ON THESE PROJECTS IS SUBJECT TO STRINGENT FINANCIAL ACCOUNTABILITY REQUIREMENTS. BY LAW, PERFORMANCE AND FINANCIAL AUDITS WILL BE PERFORMED ANNUALLY, AND ALL BOND EXPENDITURES WILL BE MONITORED BY AN INDEPENDENT CITIZENS' OVERSIGHT COMMITTEE TO ENSURE THAT FUNDS ARE SPENT AS PROMISED AND SPECIFIED. THE CITIZENS' OVERSIGHT COMMITTEE MUST INCLUDE, AMONG OTHERS, REPRESENTATION OF A BONA FIDE TAXPAYERS ASSOCIATION, A BUSINESS ORGANIZATION AND A SENIOR CITIZENS ORGANIZATION. NO DISTRICT EMPLOYEES OR VENDORS ARE ALLOWED TO SERVE ON THE CITIZENS' OVERSIGHT COMMITTEE.**

MEASURE "A" - RIVERSIDE COMMUNITY COLLEGE DISTRICT

Tax Rate Statement

An election will be held in the Riverside Community College District (the "District") on March 3, 2020 to authorize the sale of \$715,000,000 in general obligation bonds. If such bonds are authorized and sold, principal and interest on the bonds will be payable only from the proceeds of tax levies made on the taxable property in the District. These estimates are based on projections derived from information obtained from official sources and other demonstrable factors. The actual tax rates and the years in which they will apply may vary depending on the timing of bond sales, the amount of bonds sold at each sale, and actual increases in assessed valuations. The following information is submitted in compliance with Sections 9400-9404 of the California Elections Code.

- i. The best estimate of the average annual tax rate that would be required to fund this bond issue over the entire duration of bond debt service, based on estimated assessed valuations available at the time of filing of this statement, is \$0.02 per \$100 (\$20.00 per \$100,000) of assessed valuation.
- ii. The best estimate of the final fiscal year in which the tax required to fund this bond issue is anticipated to be collected is fiscal year 2053-54.
- iii. The best estimate of the highest tax rate that would be required to fund this bond issue, based on estimated assessed valuations available at the time of filing this statement, is \$0.02 per \$100 (\$20.00 per \$100,000) of assessed valuation, which is projected to be the same in every fiscal year the bonds remain outstanding.
- iv. The best estimate from official sources of the total debt service, including the principal and interest, that would be required to be repaid if all the bonds are issued and sold will be approximately \$1.43 billion.

Based upon the forgoing and projections of the District's assessed valuation, the timing of the bond sales and the amount of bonds sold at any given time will be determined by the needs of the District and other factors. Actual assessed valuations will depend upon the amount and value of taxable property within the District as determined by the County Assessor in the assessment and the equalization process.

Voters should note that the estimated tax rates are based on the ASSESSED VALUE of taxable property in the District as shown on the County's official tax rolls, not on the property's market value. Property owners should consult their own property tax bills to determine their property's assessed value and any applicable tax exemptions.

Dated: 11-20-2019

By: Wolde-Ab Isaac, Ph.D.
Chancellor
Riverside Community College District

IMPARTIAL ANALYSIS OF MEASURE "A"

The Board of Trustees ("Board") of the Riverside Community College District ("District") by adopting Resolution No. 30-19/20 ("Resolution"), elected to call an election pursuant to Section 18 of Article XVI and Section 1 of Article XIII A of the California Constitution and Section 15100 and 15264 et seq. of the California Education Code to obtain authorization to issue and sell general obligation Bonds ("Bonds") in the aggregate amount principal amount of seven hundred fifteen million dollars (\$715,000,000).

This Measure was placed on the ballot by the Board of the District.

The Bonds would be used by the District to renovate, upgrade, repair and construct buildings, classrooms, school labs, Veterans Centers and career training facilities. The Bonds may be used for school facilities projects such as repairing aging and outdated infrastructure, upgrading safety and security measures, modernizing technology and providing career training facilities in fields such as science, engineering, public safety, medical treatment and fire protection at campuses in Moreno Valley College, Norco College and Riverside City College. The Bonds would not be used to fund the salaries, pensions or benefits of any board members, administrator, and/or teachers or for other school operating expenses.

If Measure A is approved, the Board of the District will appoint a citizens' oversight committee, and conduct annual independent financial and performance audits to ensure that bond funds are spent only on the construction, modernization, and renovation of school facilities, furnishings and/or equipment, or the acquisition or lease of property for school facilities, and for no other purposes.

An ad valorem tax would be levied and collected on property within the boundaries of the District to pay the principal and interest on the Bonds. The best estimate of the average annual tax rate at this time is approximately \$0.02 per \$100 per assessment (or \$20.00 per \$100,000) of assessed value. The final year in which the tax is anticipated to be collected is 2053-2054.

The Resolution provides that the maximum interest rate on the Bonds will not exceed the maximum statutory interest and the maximum term of the Bonds, or any series thereof, will not exceed the maximum statutory term. The best estimate of the total debt service, including the principal and interest, that would be required to be repaid if all of the bonds are issued and sold is one billion four hundred and thirty million dollars (\$1.43 billion).

For this Measure to be approved fifty-five percent (55%) of qualified voters who vote on the Measure must vote yes.

A "YES" vote on Measure "A" is a vote to allow the District to sell the Bonds and levy the necessary taxes to pay for the Bonds.

A "NO" vote on Measure "A" is a vote against allowing the District to sell the Bonds and levy the necessary taxes to pay for the Bonds.

By: Ronak N. Patel, Deputy County Counsel

ARGUMENT IN FAVOR OF MEASURE "A"

Vote YES on Measure A to ensure local students have access to affordable, high-quality education and career training at Moreno Valley College, Norco College and Riverside City College.

As the cost of attending the Cal State and UC systems becomes more expensive, Measure A ensures that lower and middle-income students who can't afford the high price of a university still have an opportunity to succeed in college and careers.

With nearly 40% of local high school graduates relying on Moreno Valley College, Norco College and Riverside City College for higher education and career training, it's critical we vote YES on A to repair and upgrade our colleges.

Measure A helps our local community colleges remain vital community and economic resources that create local jobs and improve our regional economy.

Measure A improves Student and Veterans' Centers to ensure that the thousands of military veterans returning from service receive the job training, job placement, counseling and support services they need.

Vote YES on A:

- Maintain classrooms and student service centers by replacing leaky roofs, rusty plumbing and outdated electrical systems
- Improve Veterans' Centers to support military veterans and their families
- Upgrade classrooms and labs to help local students complete the first two years of college affordably, and transfer to the Cal State or UC systems
- Improve student safety and campus security systems including security lighting, cameras, emergency communications systems, smoke detectors and fire alarms
- Upgrade career training facilities for science, technology, engineering, math and computer science

Local Control and Fiscal Accountability

- Every penny of Measure A stays local to support our community colleges, students and veterans – no funds can be taken by the State
- A project list, Citizens' Oversight Committee and independent audits are required
- No funds can be used for administrators' salaries

Community leaders, local businesses and students agree: Vote YES on A for Moreno Valley College, Norco College and Riverside City College.

By: John Tavaglione, Former Supervisor
Oscar Valdepena, President/CEO MV Chamber of Commerce
Ashley Calderon, Specialist (E-4), Army Reserves/Norco College Student
Barbara E Kerr, Retired Teacher
Dr. Regina Patton Stell, President NAACP

NO ARGUMENT FILED AGAINST MEASURE "A"

CAN'T MAKE IT ON ELECTION DAY?
WE'RE MAKING IT EASY TO VOTE EARLY



AT THE REGISTRAR OF VOTERS OFFICE

2720 Gateway Drive, Riverside, CA 92507
February 3 through March 2
(excluding Holidays)

Monday through Friday
8:00 a.m. to 5:00 p.m.

Saturday, February 22 and February 29
9:00 a.m. to 4:00 p.m.

Election Day, March 3
7:00 a.m. to 8:00 p.m.

AND AT THE FOLLOWING LOCATIONS

February 21 - 23, Friday through Sunday, 10:00 a.m. to 4:00 p.m.

**GALLERIA
AT TYLER**

1299 Galleria at Tyler
Riverside, CA 92503



72-840 Highway 111
Palm Desert, CA 92260



PROMENADE
TEMECULA

40820 Winchester Road
Temecula, CA 92591

VOTE-BY-MAIL

You can request your **OFFICIAL VOTE-BY-MAIL BALLOT** by using the application on the back of this County Voter Information Guide. Return your Vote-by-Mail ballot by mail or at the following drop-off locations throughout Riverside County February 3 to March 2.

★ ★ ★ ★ ★	★ ★ ★ ★ ★	★ ★ ★ ★ ★																																
<ul style="list-style-type: none"> • City Clerk's Offices (as listed) • The Registrar of Voters Office up until close of polls on Election Day. • The Registrar of Voters 24-hour Drop Boxes. • At any Polling Place within the State of California on Election Day. 	<p><u>Participating City Clerk's Offices</u></p> <table border="0"> <tr> <td>Banning</td> <td>La Quinta</td> </tr> <tr> <td>Beaumont</td> <td>Menifee</td> </tr> <tr> <td>Blythe</td> <td>Moreno Valley</td> </tr> <tr> <td>Calimesa</td> <td>Murrieta</td> </tr> <tr> <td>Canyon Lake</td> <td>Norco</td> </tr> <tr> <td>Cathedral City</td> <td>Palm Desert</td> </tr> <tr> <td>Coachella</td> <td>Palm Springs</td> </tr> <tr> <td>Corona</td> <td>Perris</td> </tr> <tr> <td>Desert Hot Springs</td> <td>Rancho Mirage</td> </tr> <tr> <td>Eastvale</td> <td>Riverside</td> </tr> <tr> <td>Hemet</td> <td>(open until 8:00</td> </tr> <tr> <td>Indian Wells</td> <td>p.m. on Election</td> </tr> <tr> <td>Indio</td> <td>Day)</td> </tr> <tr> <td>Jurupa Valley</td> <td>San Jacinto</td> </tr> <tr> <td>Lake Elsinore</td> <td>Temecula</td> </tr> <tr> <td></td> <td>Wildomar</td> </tr> </table>	Banning	La Quinta	Beaumont	Menifee	Blythe	Moreno Valley	Calimesa	Murrieta	Canyon Lake	Norco	Cathedral City	Palm Desert	Coachella	Palm Springs	Corona	Perris	Desert Hot Springs	Rancho Mirage	Eastvale	Riverside	Hemet	(open until 8:00	Indian Wells	p.m. on Election	Indio	Day)	Jurupa Valley	San Jacinto	Lake Elsinore	Temecula		Wildomar	<p>Please visit our website for all of the drop-off locations throughout Riverside County at</p> <p><u>WWW.VOTEINFO.NET</u></p> <p>or</p> <p>call our office at (951) 486-7200 or (800) 773-VOTE (8683)</p>
Banning	La Quinta																																	
Beaumont	Menifee																																	
Blythe	Moreno Valley																																	
Calimesa	Murrieta																																	
Canyon Lake	Norco																																	
Cathedral City	Palm Desert																																	
Coachella	Palm Springs																																	
Corona	Perris																																	
Desert Hot Springs	Rancho Mirage																																	
Eastvale	Riverside																																	
Hemet	(open until 8:00																																	
Indian Wells	p.m. on Election																																	
Indio	Day)																																	
Jurupa Valley	San Jacinto																																	
Lake Elsinore	Temecula																																	
	Wildomar																																	

Language Services

The County of Riverside is making voting easier in 2020! Some polling places (but not all) will have translated sample ballots that voters can use as a reference tool when voting. Please visit www.voteinfo.net to find a list of polling places in Riverside County and the translated sample ballots that will be available at each. This will help you determine if your polling place will have one of these translated sample ballots in your preferred language.

If you wish to see one of these translated sample ballots before Election Day, you may request one. You can request one by calling (800) 773-VOTE (8683) or by visiting www.voteinfo.net. Please be aware that only voters who live in particular areas can receive these translated sample ballots. Requests must be received no later than 7 days before an election.

Additionally, remember that if you need assistance you may bring up to two people to assist you in voting, as long as they are not representatives from your employer or your union (if you have one). Bring a family member or friend!

Servicios de Idioma

¡En 2020, el Condado de Riverside facilita el proceso de votación! Algunas casillas electorales (pero no todas) contarán con muestras de boletas de votación traducidas que los votantes pueden usar como referencia al momento de votar. Por favor visite www.voteinfo.net para ver una lista de casillas electorales en el Condado de Riverside y las muestras de boletas de votación traducidas que estarán disponibles en cada una de ellas para referencia. Esto le ayudará a determinar si su casilla electoral que le corresponde contará con boletas de votación traducidas en su idioma de preferencia.

Si desea ver una de estas muestras de boletas de votación traducidas antes del Día de Elección, puede solicitar una. Para hacerlo, llame al (800) 773-VOTE (8683), o visite www.voteinfo.net. Por favor tenga en cuenta que solamente los votantes que residen en determinadas áreas pueden recibir estas muestras de boletas de votación traducidas. Las solicitudes deben ser recibidas a más tardar 7 días antes de la elección.

Además, recuerde que si necesita ayuda, puede llevar hasta dos personas para que lo asistan en la votación, siempre que no sean representantes de su empleador o su sindicato (si lo tiene). ¡Lleve a un familiar o un amigo!

語言服務

河濱縣要讓 2020 年投票變得更容易！某些（但不是所有）投票所將會提供翻譯版的樣本選票，選民可以在投票時使用這些樣本選票作為參考工具。請瀏覽 www.voteinfo.net 以查詢河濱縣的投票所清單，並瞭解每個投票所將會提供哪些翻譯版的樣本選票。這有助於您確定您的投票所是否會提供以您的慣用語言翻譯的樣本選票。

如果您希望在選舉日以前看到其中一種翻譯版的樣本選票，請致電 (800)773-VOTE (8683) 或者造訪 www.voteinfo.net 以便索取樣本選票。請注意，只有居住在特定地區的選民才能取得這些翻譯版的樣本選票。此類申請最晚必須在選舉前 7 天收到。

此外，請記得，如果您需要協助，可以由最多兩個除了您的僱主或工會（如果有）代表以外的人陪同前往投票所。投票時最好帶上一名家人或朋友！

Các Dịch Vụ Ngôn Ngữ

Quận Riverside đang nỗ lực để việc bầu cử trở nên dễ dàng hơn vào năm 2020! Một số địa điểm bỏ phiếu (nhưng không phải tất cả) sẽ dịch mẫu phiếu bầu để cử tri có thể tham khảo khi bỏ phiếu. Vui lòng truy cập www.voteinfo.net để tìm danh sách các địa điểm bỏ phiếu tại Quận Riverside và những mẫu phiếu bầu được dịch sẵn tại mỗi địa điểm. Việc này sẽ giúp quý vị xác định xem địa điểm bỏ phiếu của quý vị có mẫu phiếu bầu bằng ngôn ngữ ưu tiên của quý vị hay không.

Nếu muốn, quý vị có thể yêu cầu xem mẫu phiếu bầu được dịch trước Ngày Bầu Cử bằng cách gọi điện đến số (800) 773-VOTE (8683) hoặc truy cập www.voteinfo.net. Vui lòng lưu ý rằng chỉ những cử tri sống tại một số khu vực đặc biệt mới có thể nhận được mẫu phiếu bầu đã được dịch. Quý vị phải gửi yêu cầu trước ngày bầu cử ít nhất 7 ngày.

Ngoài ra, nếu quý vị cần trợ giúp, quý vị có thể đi cùng tối đa hai người để giúp quý vị bỏ phiếu, miễn là họ không phải là đại diện từ chủ lao động hoặc công đoàn của quý vị (nếu có). Hãy đi cùng một thành viên trong gia đình hoặc bạn bè!

Mga Serbisyo sa Wika

Mas pinapadali ng County ng Riverside ang pagboto sa 2020! Magkakaroon ng mga nakasalin na halimbawang balota ang ilang lugar ng botohan (ngunit hindi lahat) na maaaring gamitin ng mga botante bilang kanilang sanggunian kapag bumoboto. Maaaring bumisita sa www.voteinfo.net para makita ang listahan ng mga lugar ng botohan sa County ng Riverside at ang mga nakahandang salin na halimbawang balota sa bawat lugar. Makakatulong ito sa iyo upang malaman kung mayroong nakasalin na halimbawang balota sa iyong gustong wika sa iyong lugar ng botohan.

Maaari kang humiling kung gusto mong makita ang isa sa mga nakasalin na halimbawang balota bago ang Araw ng Halalan. Maaari itong hilingin sa pamamagitan ng pagtawag sa (800) 733-VOTE (8683) o pagbisita sa www.voteinfo.net. Mangyaring intindihin na ang mga botante na nakatira sa mga partikular na lugar lamang ang maaaring makatanggap ng mga nakasalin na halimbawang balota. Kailangan matanggap ang mga hiling nang hindi hihigit sa 7 araw bago ang halalan.

Bukod dito, kung kailangan mo ng tulong, maaari kang magsama ng hanggang dalawang tao para tulungan ka sa pagboto, hangga't hindi sila mga kinatawan ng iyong employer o unyon (kung mayroon ka). Magsama ng kapamilya o kaibigan!

언어 서비스

리버사이드 카운티의 2020년 투표가 더욱 쉬워졌습니다! 일부 투표소에서 번역된 투표용지 견본을 배치해 유권자가 투표 시에 참고할 수 있게 했습니다 (전체 투표소는 아님). www.voteinfo.net에서 리버사이드 카운티의 투표소 목록과 해당 투표소에서 제공하는 각각의 투표용지 견본을 확인하십시오. 해당 정보를 통해 귀하의 투표소가 귀하의 선호 언어로 투표용지 견본을 제공하는지 확인하는 데 도움을 받을 수 있습니다.

선거일 전에 번역된 투표용지 견본을 확인하고 싶은 경우 견본을 요청할 수 있습니다. (800) 773-VOTE (8683) 번호로 전화하시거나 www.voteinfo.net에 방문하여 요청하십시오. 특정 지역에 거주하는 유권자만 번역된 투표용지 견본을 받을 수 있으니 유의하시기 바랍니다. 견본 요청은 선거 7일 전까지 완료되어야 합니다.

또한 투표를 위한 지원이 필요한 경우, 고용주 또는 조합 대리인(있는 경우)을 제외한 최대 2인과 함께 투표소에 방문할 수 있음을 유의하시기 바랍니다. 가족 또는 친구와 함께 오시기 바랍니다!



Conditional Voter Registration

Did you forget to register or update your voter registration? No Problem! A new law allows you to register to vote and vote until 8:00 p.m. on Election Day at your county elections office or at any vote center or polling place in your county. This process is called Conditional Voter Registration (CVR) and is commonly referred to as Same Day Voter Registration. Here's how it works:

1. Visit the Registrar of Voters office located at 2720 Gateway Drive, Riverside, CA 92507.
2. Complete a voter registration card or register online at *RegisterToVote.ca.gov*.
3. Vote your ballot at your county elections office, vote center, or polling place.
4. Once the county elections official processes your registration and determines you are eligible, you will be registered to vote and your ballot will be counted.

To learn more about Conditional Voter Registration, visit vote.ca.gov.

If you have questions regarding Conditional Voter Registration, please call (951) 486-7200 or toll free (800) 773-VOTE (8683).

You may check the status of your voter registration at www.voteinfo.net/AmIRegistered.



California Motor Voter

The California Motor Voter program is making registering to vote at the California Department of Motor Vehicles (DMV) more convenient and secure. All eligible individuals completing driver license or ID card or change of address transactions at the DMV will be registered to vote with the California Secretary of State unless they "opt out" of automatic voter registration.

The California Motor Voter program applies to Californians who are 18 years or older and meet the following criteria:

- A United States citizen and a resident of California.
- Not currently in state or federal prison or on parole for the conviction of a felony.
- Not currently found mentally incompetent to vote by a court.

Note: Voter pre-registration is available for those 16 and 17 years of age. Their voter registration will become active automatically when they turn 18.

Before visiting a DMV field office, we recommend making an appointment. Visit <https://www.dmv.ca.gov/portal/dmv/detail/portal/foa/>. You can also use DMV online services (<https://www.dmv.ca.gov/portal/dmv/dmv/onlinesvcs>) to renew your driver license or ID card or change your address.

If you indicate you're eligible to vote, once you complete your driver license or state ID renewal form transaction online, by mail or in person at the DMV, your voter information is then transmitted securely and electronically to the California Secretary of State.

Please note that drivers with an AB 60 driver's license are not eligible to participate in the California Motor Voter program and are not eligible to vote.

For more information, visit MotorVoter.sos.ca.gov.

To register to vote online, visit RegisterToVote.ca.gov.



TOGETHER, WE COUNT!
The Census 2020 is closer than you think!

CENSUS 2020

¡JUNTOS, CONTAMOS!
¡El Censo 2020 está más cerca de lo que piensa!



Here's what it is and how you can make your community stronger.
Eh aquí lo que significa y como usted puede fortalecer su comunidad.



EVERYONE COUNTS / TODOS CUENTAN

The census counts every person living in the U.S. once, only once and in the right place.
El censo cuenta a cada persona viviendo en los Estados Unidos solo una vez y en el lugar correcto.



IT'S ABOUT \$700 BILLION / SETRATA DE \$700 BILLONES

Census data determine how \$700 billion are spent and how much comes to our region.
La información del censo determina como \$700 billones serán gastados y la cantidad que será para nuestra región.



LOCAL PROGRAMS / PROGRAMAS LOCALES

Based on population, funds would be allocated to create or improve schools, healthcare, roads, housing, and crime prevention.
Basado en la población los fondos serán usados para crear o mejorar escuelas, cuidado médico, calles y carreteras, vivienda y prevención del crimen.



FAIR REPRESENTATION / REPRESENTACION JUSTA

Every 10 years, the results of the census determine how many representatives each state gets.
Cada 10 años, los resultados Del censo sirven para determinar el número de escaños por cada estado.



IE Counts



@census_ie



IECounts.org

VOTER BILL OF RIGHTS

YOU HAVE THE FOLLOWING RIGHTS:

★ 1 The right to vote if you are a registered voter.

You are eligible to vote if you are:

- a U.S. citizen living in California
- at least 18 years old
- registered where you currently live
- not currently in state or federal prison or on parole for the conviction of a felony
- not currently found mentally incompetent to vote by a court

★ 2 The right to vote if you are a registered voter even if your name is not on the list. You will vote using a provisional ballot. Your vote will be counted if elections officials determine that you are eligible to vote.

★ 3 The right to vote if you are still in line when the polls close.

★ 4 The right to cast a secret ballot without anyone bothering you or telling you how to vote.

★ 5 The right to get a new ballot if you have made a mistake, if you have not already cast your ballot. You can:

Ask an elections official at a polling place for a new ballot,

Exchange your vote-by-mail ballot for a new one at an elections office or at your polling place, or

Vote using a provisional ballot.

★ 6 The right to get help casting your ballot from anyone you choose, except from your employer or union representative.

★ 7 The right to drop off your completed vote-by-mail ballot at any polling place in California.

★ 8 The right to get election materials in a language other than English if enough people in your voting precinct speak that language.

★ 9 The right to ask questions to elections officials about election procedures and watch the election process.

If the person you ask cannot answer your questions, they must send you to the right person for an answer. If you are disruptive, they can stop answering you.

★ 10 The right to report any illegal or fraudulent election activity to an elections official or the Secretary of State's office.

🖥️ On the web at www.sos.ca.gov

📞 By phone at **(800) 345-VOTE (8683)**

✉️ By email at elections@sos.ca.gov

IF YOU BELIEVE YOU HAVE BEEN DENIED ANY OF THESE RIGHTS, CALL THE SECRETARY OF STATE'S CONFIDENTIAL TOLL-FREE VOTER HOTLINE AT (800) 345-VOTE (8683).

IMPORTANT DATES



FEBRUARY 3

First day you can vote

FEBRUARY 17*

Registration Deadline

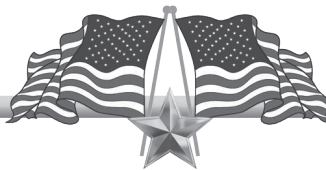
FEBRUARY 25

Last day to request a
Vote-by-Mail ballot

MARCH 3, ELECTION DAY

Vote at your polling place, drop off your Vote-by-Mail ballot at any polling location or vote at the Registrar of Voters office by 8:00 p.m.

*Date falls on a state holiday; it moves forward to the next business day.



DO YOU KNOW SOMEONE WHO IS NOT REGISTERED TO VOTE?

You can register to vote by:
Completing a registration application online

or

By requesting a registration card to be mailed to you.

You can also check to see if you are registered
by calling our office or online.

**For more information visit www.voteinfo.net
or call (951) 486-7200 or (800) 773-VOTE (8683)**

VOTE-BY-MAIL

February 3 through February 25



HAVE YOU HEARD?

You can request to Vote-by-Mail in any election or elect to receive all ballots for future elections in the mail.

It's not too late to have your ballot mailed to you for this election. Fill out the application on the back cover of this County Voter Information Guide.

QUICK - EASY - CONVENIENT

Please visit our website at www.voteinfo.net for ballot drop-off locations.

Vote First, Count First! Vote-by-Mail ballots received before Election Day are counted first. Return your ballot as soon as possible to ensure that it is included in the first Election Night results!

EARLY VOTING ALSO AVAILABLE

You can vote early at:

The Registrar of Voters Office
2720 Gateway Drive
Riverside, CA 92507



February 3 – March 2 (excluding Holidays)
Monday through Friday, 8:00 a.m. - 5:00 p.m.
Saturday, February 22 and February 29, 9:00 a.m. - 4:00 p.m.
Election Day, March 3, 7:00 a.m. - 8:00 p.m.

Please visit our website at www.voteinfo.net
for additional early voting information.

BE A PART OF HISTORY

Be an Election Officer

Receive pay for attending training and working Election Day!

We encourage individuals with bilingual skills in Spanish, Tagalog, Korean, Chinese (Cantonese/Mandarin), Vietnamese, and American Sign Language (ASL) to serve their communities as Election Officers.

Call toll free (877) 663-9906 or (951) 486-7341



SUGGEST A POLLING PLACE

The Registrar of Voters office has many partners; businesses, schools, organizations, club houses, libraries, etc.; that have served their community by hosting a polling place for our elections.

- ★ Earn \$25 for use of your facility
- ★ Serve your community
- ★ Promote your business
- ★ Great way to meet your neighbors and friends
- ★ Gain a better understanding of the voting process

If you are interested in hosting or suggesting a Polling Place, contact the Registrar of Voters office at:

Toll free (877) 663-9906 or (951) 486-7341 ★ Email: rovweb@rivco.org

Tips for California's Military and Overseas Voters

Taking part in elections is more convenient than ever for Californians serving in the military or living outside the United States. It begins when you register to vote as a military or overseas voter and receive election materials by mail, fax, or email.

- **Start early.** California's county elections officials begin sending ballots to military and overseas voters 60 days before Election Day. Fill out a voter registration application early at [RegisterToVote.ca.gov](https://www.register-to-vote.ca.gov) to ensure that you receive your voting materials in time.
- **Know your options.** When registering to vote as a military or overseas voter, you can choose to have your ballot mailed, faxed, or emailed to you. You may return your voted ballot to your county elections official by mail or, in certain circumstances, by fax. If you meet the requirements to return your ballot by fax, you must also fax the Oath of Voter form (available from your county elections official) waiving your right to a confidential ballot.
- **Stay in touch.** Once you register as a military or overseas voter, you will continue to receive a ballot and election materials from your county elections official before each election. We encourage you to update your registration each year, if needed; however, you *must* re-register to vote if you change your address, your name, or your political party preference, or if you do not participate in four consecutive statewide general elections. Visit www.sos.ca.gov/elections/voter-registration/military-overseas-voters/ for more election resources designed especially for you.

Dates to remember:

February 18: last day to register to vote and request your ballot

February 25: last day to update or change how you want to receive your ballot

March 3: Election Day. Mailed ballots must be postmarked on or before Election Day **and** received by your county elections office no later than March 6. Faxed ballots must be delivered to your county elections office by close of polls, no later than 8:00 p.m. Pacific Standard Time, on Election Day.

For more information contact:

California Secretary of State



(800) 345-VOTE



www.sos.ca.gov/elections/voter-registration/military-overseas-voters/

Federal Voting Assistance Program



(800) 438-VOTE



www.fvap.gov

Earn money and make a difference— Serve as a Poll Worker on Election Day!

Gain hands-on experience and take part in the single most important day in our democracy—Election Day!

Who can be a poll worker?

To serve as a poll worker you must be:

- ✓ A U.S. citizen or legal permanent resident; or
- ✓ An eligible high school student

What does a poll worker do?

- ✓ Sets up and closes a polling place
- ✓ Helps voters understand their rights
- ✓ Protects ballots and voting equipment

Why be a poll worker?

- ✓ Get involved and assist voters
- ✓ Contribute to your community and meet your neighbors
- ✓ Earn extra money

High School Poll Workers

To serve as a high school poll worker, a student must:

- ✓ Be a U.S. citizen or legal permanent resident
- ✓ Be at least 16 years old on Election Day
- ✓ Attend a public or private high school
- ✓ Have at least a 2.5 grade point average
- ✓ Get permission from your parents and school
- ✓ Attend a training session

For more information about serving as a poll worker contact the Riverside County Registrar of Voters at (951) 486-7200.

Check Your Voter Status Online



Visit the Secretary of State's My Voter Status page at VoterStatus.sos.ca.gov, where you can check your voter status, find your polling place, and much more.

Use **My Voter Status** to:

- See if you are registered to vote
- Check your political party preference
- Find your polling place
- Find upcoming elections in your area
- Receive your Voter Information Guide (VIG) by email before each statewide election (see below for more information on opting-out of the VIG)
- Check the status of your vote-by-mail ballot or provisional ballot

To check your voter status you will need some personal information like first name, last name, California driver license or identification card number, social security number (last 4 numbers), and date of birth.

You can use the My Voter Status tool to opt out of receiving the state VIG. However, if another registered voter in your household requests to get it by mail, a state VIG will still be mailed to your address. If you have opted out and do not receive the state VIG in the mail, information on statewide candidates and ballot measures will still be available at the VIG website (<http://voterguide.sos.ca.gov/>) before each statewide election.

Go to VoterStatus.sos.ca.gov to get started.

Pre-register at sixteen. Vote at eighteen.

Online Pre-registration is now available for eligible 16 and 17 year olds at RegisterToVote.ca.gov or via the paper voter registration form. California youth who Pre-register to vote will have their registration become active once they turn 18 years old.

Pre-register in 4 easy steps:

1. Visit www.RegisterToVote.ca.gov
2. Click the "Pre-register to Vote" button
3. Become automatically registered on your 18th birthday
4. Cast your ballot on Election Day!

What is Pre-registration?

If you are 16 or 17 years old and meet all other voter eligibility requirements, you can Pre-register to vote at RegisterToVote.ca.gov.

Simply complete the online Pre-registration application and on your 18th birthday, you will automatically be registered to vote.

Provisional voting

If your name is not on the voter list at your polling place, you have the right to vote a provisional ballot.

What is a provisional ballot?

A provisional ballot is a regular ballot that is placed in a special envelope prior to being put in the ballot box.

Who casts a provisional ballot?

Provisional ballots are ballots cast by voters who believe they are registered to vote even though their names are not on the official voter registration list at the polling place.

Vote by mail voters may need to cast provisional ballots if the voter wants to vote in person at a polling place, but did not receive their ballot or does not have their ballot with them.

Will my provisional ballot be counted?

Your provisional ballot will be counted after elections officials have confirmed that you are registered to vote in that county and you did not already vote in that election.

You may vote a provisional ballot at any polling place in the county in which you are registered to vote, however, only the elections contests you are eligible to vote for will be counted.

How can you check the status of your provisional ballot?



You can check the status of your provisional ballot at voterstatus.sos.ca.gov

Alternatively, every voter who casts a provisional ballot has the right to find out from their county elections official if the ballot was counted and, if not, the reason why it was not counted.

FROM



FIRST
CLASS
POSTAGE

PLACE STAMP HERE

DID YOU SIGN YOUR APPLICATION?

**REGISTRAR OF VOTERS
2724 GATEWAY DRIVE
RIVERSIDE CA 92507-0923**



ACCOMMODATIONS FOR VOTERS WITH DISABILITIES

A “YES” or “NO” printed under the disabled symbol/arrow on the back cover of this guide indicates whether or not your assigned polling place is accessible to physically disabled voters. Please be advised of the following alternate ways you may cast your ballot.

- **By Mail** - You may request a Vote-by-Mail ballot. Simply complete the application on the back cover of this guide, or, you may contact the Registrar of Voters Office by calling (951) 486-7200, (800) 773-VOTE (8683), TTY (951) 697-8966. The application must be received by the Registrar of Voters Office by the deadline given. Your ballot must be received at the Registrar of Voters Office no later than 8:00 p.m. on Election Day or be postmarked on or before Election Day and received no later than three days after Election Day to be counted.
- **Early Voting** - You may vote at the Registrar of Voters office located at 2720 Gateway Drive, Riverside, CA 92507, February 3 - March 2 (excluding Holidays), Monday through Friday, 8:00 a.m. to 5:00 p.m.; Saturday, February 22 and February 29, 9:00 a.m. to 4:00 p.m.; and Election Day, March 3, 7:00 a.m. to 8:00 p.m. Please visit our website at www.voteinfo.net for additional early voting locations and information.
- **Curbside Voting on Election Day** - If you are unable to enter the polling place due to a physical disability, you may request Curbside Voting at your assigned polling place. Curbside Voting doorbells are available at some polling places. If you require Curbside Voting assistance you may call (877) 663-9906 before going to your assigned polling place and/or when you arrive at the facility. An Election Officer will be contacted prior to your arrival to meet you at the curb.
- **Large Print State Voter Information Guide** - If you prefer a large print State Voter Information Guide, you may request one by contacting the California Secretary of State’s Office at (800) 345-VOTE (8683), or by contacting the Registrar of Voters Office at (951) 486-7200, (800) 773-VOTE (8683), TTY (951) 697-8966.
- **Disability Rights California** will operate a statewide hotline on March 3, Election Day, from 7 a.m. to 8 p.m. The phone number is (888) 569-7955.

REGISTRAR OF VOTERS
2724 GATEWAY DRIVE
RIVERSIDE, CA 92507-0918



NONPROFIT
U.S. POSTAGE
PAID
Registrar of Voters
Riverside

VOTE-BY-MAIL BALLOT APPLICATION

APPLICATION MUST BE RECEIVED NO LATER THAN FEBRUARY 25, 2020.

I hereby request a ballot for the Consolidated Presidential Primary Election, March 3, 2020.

PLEASE PRINT:

NAME AS REGISTERED _____

RESIDENCE ADDRESS AS REGISTERED _____

CITY STATE ZIP

MAIL BALLOT TO:

ADDRESS (IF DIFFERENT) _____

CITY STATE ZIP

If you want to vote for President, you must select a party.
I am not registered with a qualified political party. However, for this primary election only, I request a Vote-by-Mail ballot with the presidential candidates from the party below (check one box):

- American Independent Party
- Democratic Party
- Libertarian Party

To vote in the Presidential Primary for the Green, Peace and Freedom, or Republican Party, you must re-register to vote with one of those parties. You can re-register to vote online at www.registertovote.ca.gov.

Check this box to request PERMANENT VOTE-BY-MAIL status.

↓ POSTMASTER DELIVER TO ↓

I declare, under penalty of perjury, that the information provided is true and correct to the best of my knowledge.

SIGNATURE REQUIRED

SIGNATURE OF VOTER DATE

33-BCov NPP PRIMARY 03-03-2020

✓ You May Cast Your Vote Early

At

THE REGISTRAR OF VOTERS OFFICE
2720 Gateway Drive, Riverside, CA 92507

February 3 through March 2
(Excluding Holidays)

Monday through Friday, 8:00 a.m. to 5:00 p.m.
Saturday, February 22 and February 29,
9:00 a.m. to 4:00 p.m.

Election Day March 3
7:00 a.m. to 8:00 p.m.

Please visit our website at www.voteinfo.net for additional early voting locations and information.

IMPORTANT NOTICE!!!

Accessible Voting Unit available at all polling locations.

TO MARK YOUR VOTE
FILL IN THE OVAL



VOTE!!!

For a demonstration on marking your ballot visit www.voteinfo.net

BALLOT TYPE 008

VOTE EARLY

IT'S QUICK
IT'S EASY
IT'S CONVENIENT

GET OUT OF LINE ON ELECTION DAY!
VOTE-BY-MAIL

↓ LOCATION OF YOUR POLLING PLACE ↓



ACCESS?

