



Registrar of Voters

# Consolidated General Election

*Tuesday, November 5, 2019*  
*County Voter Information Guide*

Polling Place Location  
on Back Cover  
Polls Open  
November 5, 2019  
7:00 a.m. to 8:00 p.m.

.....  
Registration Deadline  
October 21, 2019  
Additional Information Inside  
.....

Quick • Easy • Convenient  
**Vote-By-Mail**  
October 7th - October 29th  
Application on Back Cover

**AVISO IMPORTANTE**  
Una traducción en Español de  
esta Guía de Información del  
Condado Para el Votante puede  
obtenerse en la oficina del Registro  
de Votantes llamando al (951) 486- 7200  
o (800) 773-VOTE (8683) o visite nuestro  
sitio web [www.voteinfo.net](http://www.voteinfo.net)



# Get out of line on Election Day!



## **VOTE-BY-MAIL**

Quick, easy, convenient...  
from the comfort of your home!  
See application on back cover

## **VOTE EARLY**

Riverside County  
Registrar of Voters Office  
See inside for additional locations and information

## **YOU HAVE THE OPTION**

## **OPT-IN TO VIEW YOUR COUNTY VOTER INFORMATION GUIDE ONLINE!**

You can view all future  
County Voter Information Guides  
online with 24/7 access at your convenience.

**It's easy and great for the environment.**

For more information visit [www.voteinfo.net](http://www.voteinfo.net)  
or call (951) 486-7200 or (800) 773-VOTE (8683)



---

**REBECCA SPENCER**  
Registrar of Voters



---

**ART TINOCO**  
Assistant Registrar of Voters

---

**REGISTRAR OF VOTERS**  
**COUNTY OF RIVERSIDE**

---

Dear Voter:

**November 5, 2019 is Election Day.** This County Voter Information Guide provides ballot marking instructions, polling place location, candidate information, and other important election details that you should review before you vote. You may mark your selections on your Sample Ballot and take it with you to the polls for easy reference.

You have several options for voting:

**Vote-by-Mail** – Voting by mail is convenient and easy. You will find an application to receive a Vote-by-Mail ballot on the back cover of this pamphlet. The deadline to request a Vote-by-Mail ballot is October 29. You have several options for returning your ballot:

- Mail your ballot in time to reach the Registrar of Voters Office by 8:00 p.m. on Election Day, or be postmarked on or before Election Day and received no later than three days after Election Day to be counted.
- Return your ballot in person to the Registrar of Voters Office during regular business hours and until close of polls on Election Day. For your convenience the Registrar's office has a secure locked drop box at its entry for ballot drop off 24 hours a day.
- Deposit your ballot in one of the secure drop-off boxes available at designated City Clerks' Offices from October 7 through November 4. Please visit our website to view a map of ballot drop-off locations.
- Take your ballot to any polling place, vote center, or ballot drop-off location within the state no later than the close of the polls on Election Day.
- You may confirm that the Registrar of Voters Office has received your returned Vote-by-Mail ballot on our website at [www.voteinfo.net](http://www.voteinfo.net).
- **Vote First, Count First!** Vote-by-Mail ballots received before Election Day are counted first. Return your ballot as soon as possible to ensure that it is included in the first Election Night results!

**Early Voting** – Vote at the Registrar of Voters Office beginning October 7 through November 4 (excluding Holidays), Monday through Friday, from 8:00 a.m. to 5:00 p.m.; Saturday, October 26 and November 2, from 9:00 a.m. to 4:00 p.m.; and Election Day, November 5, from 7:00 a.m. to 8:00 p.m. Please visit our website at [www.voteinfo.net](http://www.voteinfo.net) for additional early voting information.

**Vote on Election Day November 5** – See the back cover of this County Voter Information Guide for your Polling Place location.

Have you considered participating in the Electoral process? We need you to volunteer to work the polls on Election Day! We are eager to train you to assist voters with their fundamental right to vote. Please contact us for more information.

The Registrar of Voters team is here to serve you. Please contact us anytime, so we can help make your voting experience a positive one. Thank you for participating in this election – your vote counts!

Sincerely,

**REBECCA SPENCER**  
Registrar of Voters



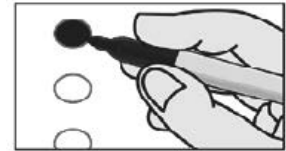
Be sure to follow the Registrar of Voters on  
Facebook, YouTube and Twitter.

# HOW TO MARK YOUR PAPER BALLOT

Please refer to the following instructions on how to properly complete your Official Ballot:

- Completely fill in the oval next to your choice like the example provided.
- Check both front and back of ballot for voting contests.
- Use a black ink pen or marker. Do not use red ink.
- Completely filling in the oval is preferred.
- Vote for no more than the number of votes allowed in each contest (e.g. vote for one, vote for no more than two, etc.).
- Please keep the Vote-by-Mail ballot folded the same way as you received it.

## TO MARK YOUR VOTE FILL IN THE OVAL



**VOTE!!!**

## IMPORTANT NOTE!

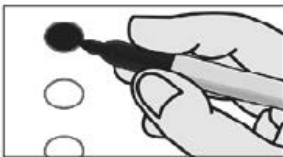
If you are a Vote-by-Mail voter, you must fill out and sign your return envelope in order for your vote to be counted.

---

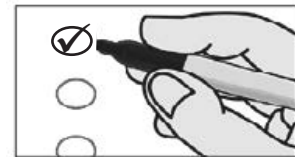
**MAKE YOUR VOTE COUNT...MARK YOUR BALLOT CORRECTLY**

## EXAMPLE

### CORRECT



### INCORRECT



For a demonstration on marking your ballot, please visit our website at [www.voteinfo.net](http://www.voteinfo.net)

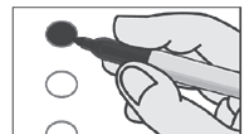
# SAMPLE BALLOT / BOLETA DE MUESTRA

## CONSOLIDATED GENERAL ELECTION / ELECCIÓN GENERAL CONSOLIDADA

**November 5, 2019 / 5 de noviembre de 2019**

Mark your choices on your Sample Ballot, then refer to it when you vote / Marque sus opciones en su Boleta de Muestra, luego refiérase a esta cuando esté votando

NONPARTISAN OFFICES CARGOS NO PARTIDARIOS	DISTRICT / DISTRITO
SCHOOL / ESCOLAR	CABAZON WATER DISTRICT DISTRITO DE AGUA DE CABAZON
BANNING UNIFIED SCHOOL DISTRICT DISTRITO ESCOLAR UNIFICADO DE BANNING	Director Director
Governing Board Member, Trustee Area 3, Full Term Miembro Junta Gobernante, Fideicomisario Área 3, Plazo Completo	Vote for no more than Two Vote por no más de Dos
Vote for One Vote por Uno	<input type="radio"/> <b>DIANA MORRIS</b> Reservation Agent Agente de Reservaciones
<input type="radio"/> <b>KERRI MARINER</b> Incumbent Titular	<input type="radio"/> <b>ALAN L. DAVIS</b> Incumbent Titular
<input type="radio"/> <b>LAURA TROUTMAN</b>	<input type="radio"/> <b>MAXINE ISRAEL</b> Cabazon Water District Director Directora de Distrito de Agua de Cabazon
<input type="radio"/>	<input type="radio"/>
<input type="radio"/>	<input type="radio"/>



# **VOTER'S INFORMATION GUIDE SECTION**

**The following pages contain voter information applicable to your ballot which may include the following items:**

## **■ CANDIDATE STATEMENTS**

This guide section may not contain a complete list of candidate statements. A complete list of candidates appears on the Sample Ballot section of this guide. Each candidate's statement in this guide is volunteered by the candidate and is printed at the expense of the candidate unless otherwise determined by the governing body. Deposit amounts required for publication of candidate statements are listed in the candidate handbook at [www.voteinfo.net](http://www.voteinfo.net). Additional candidate statements may be available and viewed at [www.voteinfo.net](http://www.voteinfo.net).

Statements made on the following pages represent the views of the authors and are not endorsed by the County of Riverside. Internet website addresses included in any statements are provided by the authors. The County of Riverside assumes no liability for the accuracy or content of websites listed therein.

The text, grammar, and spelling are as submitted by the authors.

## **POLLING PLACE REMINDER NO ELECTIONEERING!**



All electioneering, voter solicitation, etc. is prohibited within 100 feet in any direction of the room where voters are casting ballots.

Avoid wearing or displaying campaign buttons, hats, t-shirts, and other political items.

CALIFORNIA ELECTIONS CODE §§18370, 18371

**CANDIDATE STATEMENT FOR  
GOVERNING BOARD MEMBER,  
BANNING UNIFIED SCHOOL DISTRICT, TRUSTEE AREA 3,  
FULL TERM**

**LAURA TROUTMAN**

**AGE: 33**

**EDUCATION AND QUALIFICATIONS:**

My name is Laura Troutman, and I'm running for school board to make improvements in the Banning Unified School District (BUSD). These kids are our future, and I feel it is our job as parents and community members to assure our kids get the best education possible. As a mother of three, whose children attend BUSD schools, I understand the importance of a child's education and my goal is to see that every child succeeds. Recently our district has experienced a strike. This was a clear breakdown in communication and if elected I will take an active role in ensuring that we continue to attract, obtain, and train the highest quality of educators to mold the young minds in our community. I have decided to run after many conversations with Cabazon elementary teachers and I have gained their support. I am also being endorsed by the Banning Teachers Association, and I hope to gain your support as well, so we as a community can reach the goal of making Banning Unified the best in the county once again.



---

---

CAN'T MAKE IT ON ELECTION DAY?  
WE'RE MAKING IT EASY TO VOTE EARLY

---

---



**AT THE REGISTRAR OF VOTERS OFFICE**

2720 Gateway Drive, Riverside, CA 92507  
October 7 through November 4  
(excluding Holidays)

Monday through Friday  
8:00 a.m. to 5:00 p.m.

Saturday, October 26 and November 2  
9:00 a.m. to 4:00 p.m.

Election Day, November 5  
7:00 a.m. to 8:00 p.m.

**AND AT THE FOLLOWING LOCATIONS**

October 25, Friday, 10:00 a.m. to 4:00 p.m.

Blindness Support Services Inc.  
3696 Beatty Drive  
Riverside, CA 92506

October 25 - 26, Friday through Saturday, 10:00 a.m. to 4:00 p.m.

Palm Springs City Hall  
3200 E. Tahquitz Canyon Way  
Palm Springs, CA 92262

---

---

**VOTE-BY-MAIL**

You can request your **OFFICIAL VOTE-BY-MAIL BALLOT** by using the application on the back of this County Voter Information Guide. Return your Vote-by-Mail ballot by mail or at the following drop-off locations throughout Riverside County October 7 to November 4.

★ ★ ★ ★ ★	★ ★ ★ ★ ★	★ ★ ★ ★ ★
<ul style="list-style-type: none"><li>• City Clerk's Offices (as listed)</li><li>• The Registrar of Voters Office up until close of polls on Election Day.</li><li>• The Registrar of Voters 24-hour Drop Box is available east of the main entry doors.</li><li>• At any Polling Place within the State of California on Election Day.</li></ul>	<p><b><u>Participating City Clerk's Offices</u></b></p> <p>Banning Jurupa Valley Palm Springs (open until 8:00 p.m. on Election Day) Riverside (open until 8:00 p.m. on Election Day)</p>	<p>Please visit our website for all of the drop-off locations throughout Riverside County at</p> <p><b><u>WWW.VOTEINFO.NET</u></b></p> <p>or</p> <p>call our office at (951) 486-7200 or (800) 773-VOTE (8683)</p>



## Language Services

The County of Riverside is making voting easier in 2019! Some polling places (but not all) will have translated sample ballots that voters can use as a reference tool when voting. Please visit [www.voteinfo.net](http://www.voteinfo.net) to find a list of polling places in Riverside County and the translated sample ballots that will be available at each. This will help you determine if your polling place will have one of these translated sample ballots in your preferred language.

If you wish to see one of these translated sample ballots before Election Day, you may request one. You can request one by calling (800) 773-VOTE (8683) or by visiting [www.voteinfo.net](http://www.voteinfo.net). Please be aware that only voters who live in particular areas can receive these translated sample ballots. Requests must be received no later than 7 days before an election.

Additionally, remember that if you need assistance you may bring up to two people to assist you in voting, as long as they are not representatives from your employer or your union (if you have one). Bring a family member or friend!

## Servicios de Idioma

¡En 2019, el Condado de Riverside facilita el proceso de votación! Algunas casillas electorales (pero no todas) contarán con muestras de boletas de votación traducidas que los votantes pueden usar como referencia al momento de votar. Por favor visite [www.voteinfo.net](http://www.voteinfo.net) para ver una lista de casillas electorales en el Condado de Riverside y las muestras de boletas de votación traducidas que estarán disponibles en cada una de ellas para referencia. Esto le ayudará a determinar si su casilla electoral que le corresponde contará con boletas de votación traducidas en su idioma de preferencia.

Si desea ver una de estas muestras de boletas de votación traducidas antes del Día de Elección, puede solicitar una. Para hacerlo, llame al (800) 773-VOTE (8683), o visite [www.voteinfo.net](http://www.voteinfo.net). Por favor tenga en cuenta que solamente los votantes que residen en determinadas áreas pueden recibir estas muestras de boletas de votación traducidas. Las solicitudes deben ser recibidas a más tardar 7 días antes de la elección.

Además, recuerde que si necesita ayuda, puede llevar hasta dos personas para que lo asistan en la votación, siempre que no sean representantes de su empleador o su sindicato (si lo tiene). ¡Lleve a un familiar o un amigo!

## 語言服務

河濱縣要讓 2019 年投票變得更容易! 某些 (但不是所有) 投票所將會提供翻譯版的樣本選票。選民可以在投票時使用這些樣本選票作為參考工具。請瀏覽 [www.voteinfo.net](http://www.voteinfo.net) 以查詢河濱縣的投票所清單, 並瞭解每個投票所將會提供哪些翻譯版的樣本選票。這有助於您確定您的投票所是否會提供以您的慣用語言翻譯的樣本選票。

如果您希望在選舉日以前看到其中一種翻譯版的樣本選票, 請致電 (800) 773-VOTE (8683) 或者造訪 [www.voteinfo.net](http://www.voteinfo.net) 以便索取樣本選票。請注意, 只有居住在特定地區的選民才能取得這些翻譯版的樣本選票。此類申請最晚必須在選舉前 7 天收到。

此外, 請記得, 如果您需要協助, 可以由最多兩個除了您的僱主或工會 (如果有) 代表以外的人陪同前往投票所。投票時最好帶上一名家人或朋友!

## Các Dịch Vụ Ngôn Ngữ

Quận Riverside đang nỗ lực để việc bầu cử trở nên dễ dàng hơn vào năm 2019! Một số địa điểm bỏ phiếu (nhưng không phải tất cả) sẽ dịch mẫu phiếu bầu để cử tri có thể tham khảo khi bỏ phiếu. Vui lòng truy cập [www.voteinfo.net](http://www.voteinfo.net) để tìm danh sách các địa điểm bỏ phiếu tại Quận Riverside và những mẫu phiếu bầu được dịch sẵn tại mỗi địa điểm. Việc này sẽ giúp quý vị xác định xem địa điểm bỏ phiếu của quý vị có mẫu phiếu bầu bằng ngôn ngữ ưu tiên của quý vị hay không.

Nếu muốn, quý vị có thể yêu cầu xem mẫu phiếu bầu được dịch trước Ngày Bầu Cử bằng cách gọi điện đến số (800) 773-VOTE (8683) hoặc truy cập [www.voteinfo.net](http://www.voteinfo.net). Vui lòng lưu ý rằng chỉ những cử tri sống tại một số khu vực đặc biệt mới có thể nhận được mẫu phiếu bầu đã được dịch. Quý vị phải gửi yêu cầu trước ngày bầu cử ít nhất 7 ngày.

Ngoài ra, nếu quý vị cần trợ giúp, quý vị có thể đi cùng tối đa hai người để giúp quý vị bỏ phiếu, miễn là họ không phải là đại diện từ chủ lao động hoặc công đoàn của quý vị (nếu có). Hãy đi cùng một thành viên trong gia đình hoặc bạn bè!

## Mga Serbisyo sa Wika

Mas pinapadali ng County ng Riverside ang pagboto sa 2019! Magkakaroon ng mga nakasalin na halimbawang balota ang ilang lugar ng botohan (ngunit hindi lahat) na maaaring gamitin ng mga botante bilang kanilang sanggunian kapag bumoboto. Maaaring bumisita sa [www.voteinfo.net](http://www.voteinfo.net) para makita ang listahan ng mga lugar ng botohan sa County ng Riverside at ang mga nakahandang salin na halimbawang balota sa bawat lugar. Makakatulong ito sa iyo upang malaman kung mayroong nakasalin na halimbawang balota sa iyong gustong wika sa iyong lugar ng botohan.

Maaari kang humiling kung gusto mong makita ang isa sa mga nakasalin na halimbawang balota bago ang Araw ng Halalan. Maaari itong hilingin sa pamamagitan ng pagtawag sa (800) 773-VOTE (8683) o pagbisita sa [www.voteinfo.net](http://www.voteinfo.net). Mangyaring intindihin na ang mga botante na nakatira sa mga partikular na lugar lamang ang maaaring makatanggap ng mga nakasalin na halimbawang balota. Kailangan matanggap ang mga hiling nang hindi hihigit sa 7 araw bago ang halalan.

Karagdagan, kung kailangan mo ng tulong, maaari kang magsama ng hanggang dalawang tao para tulungan ka sa pagboto, hangga't hindi sila mga kinatawan ng iyong employer o unyon (kung mayroon ka). Magsama ng kapamilya o kaibigan!

## 언어 서비스

리버사이드 카운티의 2019년 투표가 더욱 쉬워졌습니다! 일부 투표소에서 번역된 투표용지 견본을 배치해 유권자가 투표 시에 참고할 수 있게 했습니다 (전체 투표소는 아님). [www.voteinfo.net](http://www.voteinfo.net)에서 리버사이드 카운티의 투표소 목록과 해당 투표소에서 제공하는 각각의 투표용지 견본을 확인하십시오. 해당 정보를 통해 귀하의 투표소가 귀하의 선호 언어로 투표용지 견본을 제공하는지 확인하는 데 도움을 받을 수 있습니다.

선거일 전에 번역된 투표용지 견본을 확인하고 싶은 경우 견본을 요청할 수 있습니다. (800) 773-VOTE (8683) 번호로 전화하시거나 [www.voteinfo.net](http://www.voteinfo.net) 에 방문하여 요청하십시오. 특정 지역에 거주하는 유권자만 번역된 투표용지 견본을 받을 수 있으니 유의하시기 바랍니다. 견본 요청은 선거 7일 전까지 완료되어야 합니다.

또한 투표를 위한 지원이 필요한 경우, 고용주 또는 조합 대리인(있는 경우)을 제외한 최대 2인과 함께 투표소에 방문할 수 있음을 유의하시기 바랍니다. 가족 또는 친구와 함께 오시기 바랍니다!



## **Conditional Voter Registration**

Did you forget to register? No problem! Did you know that during the period of 14 days prior to Election Day through and including Election Day, you can go to the office of the Riverside County Registrar of Voters to conditionally register to vote and vote? This process is called Conditional Voter Registration (CVR). Here's how it works:

1. Visit the Registrar of Voters office located at 2720 Gateway Drive, Riverside, CA 92507
2. Complete a voter registration card or register online at [RegisterToVote.ca.gov](https://RegisterToVote.ca.gov)
3. Vote your CVR provisional ballot. **CVR ballots will only be issued at the office of the Registrar of Voters.**

Once the county elections official processes the affidavit of registration, determines that you're eligible to register, and validates your information, the registration becomes permanent and your CVR provisional ballot will be counted.

If you have questions regarding Conditional Voter Registration, please call (951) 486-7200 or toll free (800) 773-VOTE (8683)

You may check the status of your voter registration at [www.voteinfo.net/AmlRegistered](http://www.voteinfo.net/AmlRegistered)



## **California Motor Voter**

The California Motor Voter program is making registering to vote at the California Department of Motor Vehicles (DMV) more convenient and secure. All eligible individuals completing driver license or ID card or change of address transactions at the DMV will be registered to vote with the California Secretary of State unless they "opt out" of automatic voter registration.

The California Motor Voter program applies to Californians who are 18 years or older and meet the following criteria:

- A United States citizen and a resident of California.
- Not currently in state or federal prison or on parole for the conviction of a felony.
- Not currently found mentally incompetent to vote by a court.

Note: Voter pre-registration is available for those 16 and 17 years of age. Their voter registration will become active automatically when they turn 18.

Before visiting a DMV field office, we recommend making an appointment. Visit <https://www.dmv.ca.gov/portal/dmv/detail/portal/foa/welcome> to get started. You can also use DMV online services (<https://www.dmv.ca.gov/portal/dmv/dmv/online/vcs>) to renew your driver license or ID card or change your address.

If you indicate you're eligible to vote, once you complete your driver license or state ID renewal form transaction online, by mail or in person at the DMV, your voter information is then transmitted securely and electronically to the California Secretary of State.

Please note that drivers with an AB 60 driver's license are not eligible to participate in the California Motor Voter program and are not eligible to vote.

For more information, visit [MotorVoter.sos.ca.gov](https://MotorVoter.sos.ca.gov).

To register to vote online, visit [RegisterToVote.ca.gov](https://RegisterToVote.ca.gov).



# VOTER BILL OF RIGHTS

---

## YOU HAVE THE FOLLOWING RIGHTS:



### **The right to vote if you are a registered voter.**

You are eligible to vote if you are:

- a U.S. citizen living in California
- at least 18 years old
- registered where you currently live
- not currently in state or federal prison or on parole for the conviction of a felony
- not currently found mentally incompetent to vote by a court



**The right to vote if you are a registered voter even if your name is not on the list.** You will vote using a provisional ballot. Your vote will be counted if elections officials determine that you are eligible to vote.



**The right to vote if you are still in line when the polls close.**



**The right to cast a secret ballot** without anyone bothering you or telling you how to vote.



**The right to get a new ballot if you have made a mistake,** if you have not already cast your ballot. You can:

**Ask an elections official at a polling place** for a new ballot,

**Exchange your vote-by-mail ballot** for a new one at an elections office or at your polling place, or

**Vote using a provisional ballot.**



**The right to get help casting your ballot** from anyone you choose, except from your employer or union representative.



**The right to drop off your completed vote-by-mail ballot at any polling place** in California.



**The right to get election materials in a language other than English** if enough people in your voting precinct speak that language.



**The right to ask questions to elections officials about election procedures** and watch the election process. If the person you ask cannot answer your questions, they must send you to the right person for an answer. If you are disruptive, they can stop answering you.



**The right to report any illegal or fraudulent election activity** to an elections official or the Secretary of State's office.

 On the web at **[www.sos.ca.gov](http://www.sos.ca.gov)**

 By phone at **(800) 345-VOTE (8683)**

 By email at **[elections@sos.ca.gov](mailto:elections@sos.ca.gov)**

---

**IF YOU BELIEVE YOU HAVE BEEN DENIED ANY OF THESE RIGHTS, CALL THE SECRETARY OF STATE'S  
CONFIDENTIAL TOLL-FREE VOTER HOTLINE AT (800) 345-VOTE (8683).**

---

# IMPORTANT DATES



## **OCTOBER 7**

First day you can vote

## **OCTOBER 21**

Registration Deadline

## **OCTOBER 29**

Last day to request a  
Vote-by-Mail ballot

## **NOVEMBER 5, ELECTION DAY**

Vote at your polling place, drop off your Vote-by-Mail ballot at any polling location or vote at the Registrar of Voters office by 8:00 p.m.



## **DO YOU KNOW SOMEONE WHO IS NOT REGISTERED TO VOTE?**

You can register to vote by:  
Completing a registration application online  
or

By requesting a registration card to be mailed to you.

You can also check to see if you are registered  
by calling our office or online.

**For more information visit [www.voteinfo.net](http://www.voteinfo.net)  
or call (951) 486-7200 or (800) 773-VOTE (8683)**

# VOTE-BY-MAIL

## October 7 through October 29



### HAVE YOU HEARD?

You can request to Vote-by-Mail in any election or elect to receive all ballots for future elections in the mail.

It's not too late to have your ballot mailed to you for this election. Fill out the application on the back cover of this County Voter Information Guide.

### QUICK - EASY - CONVENIENT

Please visit our website at [www.voteinfo.net](http://www.voteinfo.net) for ballot drop-off locations.

**Vote First, Count First!** Vote-by-Mail ballots received before Election Day are counted first. Return your ballot as soon as possible to ensure that it is included in the first Election Night results!

## EARLY VOTING ALSO AVAILABLE

You can vote early at:

The Registrar of Voters Office  
2720 Gateway Drive  
Riverside, CA 92507



October 7 – November 4 (excluding Holidays)  
Monday through Friday, 8:00 a.m. - 5:00 p.m.  
Saturday, October 26 and November 2, 9:00 a.m. - 4:00 p.m.  
Election Day, November 5, 7:00 a.m. - 8:00 p.m.

**Please visit our website at [www.voteinfo.net](http://www.voteinfo.net)  
for additional early voting information.**



# BE A PART OF HISTORY

## Be an Election Officer

### **Receive pay for attending training and working Election Day!**

We encourage individuals with bilingual skills in Spanish, Tagalog, Korean, Chinese (Cantonese/Mandarin), Vietnamese, and American Sign Language (ASL) to serve their communities as Election Officers.

**Call toll free (877) 663-9906 or (951) 486-7341**



## **SUGGEST A POLLING PLACE**

The Registrar of Voters office has many partners; businesses, schools, organizations, club houses, libraries, etc.; that have served their community by hosting a polling place for our elections.

- ★ Earn \$25 for use of your facility
- ★ Serve your community
- ★ Promote your business
- ★ Great way to meet your neighbors and friends
- ★ Gain a better understanding of the voting process

If you are interested in hosting or suggesting a Polling Place, contact the Registrar of Voters office at:

**Toll free (877) 663-9906 or (951) 486-7341 ★ Email: [rovweb@rivco.org](mailto:rovweb@rivco.org)**

FROM



FIRST  
CLASS  
POSTAGE

PLACE STAMP HERE

DID YOU SIGN YOUR APPLICATION?

REGISTRAR OF VOTERS  
2724 GATEWAY DRIVE  
RIVERSIDE CA 92507-0923



## ACCOMMODATIONS FOR VOTERS WITH DISABILITIES

A “YES” or “NO” printed under the disabled symbol/arrow on the back cover of this guide indicates whether or not your assigned polling place is accessible to physically disabled voters. Please be advised of the following alternate ways you may cast your ballot.

- **By Mail** - You may request a Vote-by-Mail ballot. Simply complete the application on the back cover of this guide, or, you may contact the Registrar of Voters Office by calling (951) 486-7200, (800) 773-VOTE (8683), TTY (951) 697-8966. The application must be received by the Registrar of Voters Office by the deadline given. Your ballot must be received at the Registrar of Voters Office no later than 8:00 p.m. on Election Day or be postmarked on or before Election Day and received no later than three days after Election Day to be counted.
- **Early Voting** - You may vote at the Registrar of Voters office located at 2720 Gateway Drive, Riverside, CA 92507, October 7 - November 4 (excluding Holidays), Monday through Friday, 8:00 a.m. to 5:00 p.m.; Saturday, October 26 and November 2, 9:00 a.m. to 4:00 p.m.; and Election Day, November 5, 7:00 a.m. to 8:00 p.m. Please visit our website at [www.voteinfo.net](http://www.voteinfo.net) for additional early voting locations and information.
- **Curbside Voting on Election Day** - If you are unable to enter the polling place due to a physical disability, you may request Curbside Voting at your assigned polling place. Curbside Voting doorbells are available at some polling places. If you require Curbside Voting assistance you may call (877) 663-9906 before going to your assigned polling place and/or when you arrive at the facility. An Election Officer will be contacted prior to your arrival to meet you at the curb.



REGISTRAR OF VOTERS  
2724 GATEWAY DRIVE  
RIVERSIDE, CA 92507-0918



NONPROFIT  
U.S. POSTAGE  
**PAID**  
Registrar of Voters  
Riverside

## VOTE-BY-MAIL BALLOT APPLICATION

APPLICATION MUST BE RECEIVED NO LATER THAN OCTOBER 29, 2019.

I hereby request a ballot for the Consolidated General Election, November 5, 2019.

PLEASE PRINT:

NAME AS REGISTERED

RESIDENCE ADDRESS AS REGISTERED

CITY STATE ZIP

I declare, under penalty of perjury, that the information provided is true and correct to the best of my knowledge.

SIGNATURE  
REQUIRED

SIGNATURE OF VOTER

DATE

MAIL BALLOT TO:

ADDRESS (IF DIFFERENT)

CITY STATE ZIP

☒ Check this box to request PERMANENT VOTE-BY-MAIL status.

↓ POSTMASTER DELIVER TO ↓

33-BCov General 11-05-2019

✓ **You May Cast Your Vote Early**

At

**THE REGISTRAR OF VOTERS OFFICE**  
2720 Gateway Drive, Riverside, CA 92507

October 7 through November 4  
(Excluding Holidays)

Monday through Friday, 8:00 a.m. to 5:00 p.m.

Saturday, October 26 and November 2,  
9:00 a.m. to 4:00 p.m.

**Election Day November 5**  
**7:00 a.m. to 8:00 p.m.**

Please visit our website at [www.voteinfo.net](http://www.voteinfo.net) for  
additional early voting locations and information.

\*\*\*\*\*

### IMPORTANT NOTICE!!!

Accessible Voting Unit available at all polling locations.

TO MARK YOUR VOTE  
FILL IN THE OVAL



VOTE!!!

For a demonstration on marking your ballot visit [www.voteinfo.net](http://www.voteinfo.net)

BALLOT  
TYPE

013

**VOTE EARLY**

IT'S QUICK

IT'S EASY

IT'S CONVENIENT

**GET OUT OF LINE ON ELECTION DAY!**

**VOTE-BY-MAIL**

↓ LOCATION OF YOUR POLLING PLACE ↓



ACCESS?

