



Registrar of Voters

Polling Place Location  
on Back Cover

Polls Open  
November 2, 2021  
7:00 a.m. to 8:00 p.m.

.....  
Registration Deadline  
October 18, 2021  
.....

Quick • Easy • Convenient

This election every voter  
receives a Vote-By-Mail ballot.  
Additional Information Inside  
.....

Request Language Assistance  
Form on Back Cover to receive  
election material translated in  
available selected languages.

AVISO IMPORTANTE  
Una traducción en Español de  
esta Guía de Información del  
Condado Para el Votante puede  
obtenerse en la oficina del Registro  
de Votantes llamando al (951) 486- 7200  
o (800) 773-VOTE (8683) o visite nuestro  
sitio web [www.voteinfo.net](http://www.voteinfo.net)

# Consolidated General Election

*Tuesday, November 2, 2021*  
*County Voter Information Guide*

IMPORTANT!  
VOTING HAS CHANGED! DETAILS INSIDE



COUNTY OF RIVERSIDE REGISTRAR OF VOTERS  
2720 Gateway Drive, Riverside, CA 92507-0918  
(951) 486-7200 • (800) 773-VOTE (8683) • California Relay Service (Dial 711)  
Mailing Address: 2724 Gateway Drive, Riverside, CA 92507-0918  
[www.voteinfo.net](http://www.voteinfo.net)

# THIS ELECTION VOTING IS DIFFERENT



## VOTE-BY-MAIL

**Vote at home using your Vote-By-Mail ballot**

No Postage Required

Quick, easy, convenient...

from the comfort of your home!

OR

## BALLOT DROP-OFF LOCATION

**at the Registrar of Voters Office or at  
City Clerk locations in Riverside County**

No Postage Required

(see inside for location information and hours)



OR

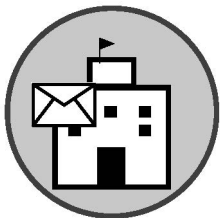
## POLLING PLACE

**Vote in-person at  
your assigned Polling Place in Riverside County**

Election Day, November 2, 7:00 a.m. to 8:00 p.m.

**Visit our website...**

for a list of polling places throughout Riverside County!



For more information visit [www.voteinfo.net](http://www.voteinfo.net)  
or call (951) 486-7200 or (800) 773-VOTE (8683)

---

**REBECCA SPENCER**

Registrar of Voters



**ART TINOCO**

Assistant Registrar of Voters

---

**REGISTRAR OF VOTERS**  
COUNTY OF RIVERSIDE

---

Dear Riverside County Voter,

Please note – this year voting is different! This Voter Information Guide contains information for the November 2, 2021 Consolidated General Election. In an effort to reduce the spread of COVID-19 and in accordance with State Law, the Riverside County Registrar of Voters will be deploying a new election model for the upcoming November 2, 2021 Election. This will offer our voters more ways to vote safely. Each eligible registered voter for the November 2, 2021 Election will receive a ballot by mail beginning Monday, October 4, 2021.

Voters can verify their voter registration at [voterstatus.sos.ca.gov](https://voterstatus.sos.ca.gov) or register to vote at [registertovote.ca.gov](https://registertovote.ca.gov).

- Your Vote-By-Mail ballot may be returned at any of our secure Ballot Drop-Off locations that will be available beginning October 4, 2021 or via USPS (no postage required).
- We will be operating Polling Places in Riverside County. You can vote at your assigned polling place on Election Day, November 2, 2021.
- You may track your ballot by registering at [WheresMyBallot.sos.ca.gov](https://WheresMyBallot.sos.ca.gov).
- A list of all Ballot Drop-Off locations and Polling Places is posted at [www.voteinfo.net](https://www.voteinfo.net).

The Riverside County Registrar of Voters recommends that voters only use the in-person Polling Places if absolutely necessary, as the generalized use of in-person voting presents risks to public health and safety in light of the COVID-19 pandemic.

Please feel free to contact the Riverside County Registrar of Voters at (951) 486-7200 with any questions or concerns regarding the upcoming November 2, 2021 Consolidated General Election.

Sincerely,

**REBECCA SPENCER**

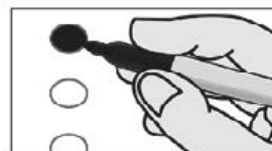
Registrar of Voters

# HOW TO MARK YOUR OFFICIAL PAPER BALLOT

Please refer to the following instructions on how to properly complete your Official Paper Ballot:

- Completely fill in the oval next to your choice like the example provided.
- Check both front and back of ballot for voting contests.
- Use a black ink pen or marker. Do not use red ink.
- Completely filling in the oval is preferred.
- Vote for no more than the number of votes allowed in each contest (e.g., vote for one, vote for no more than two, etc.).
- Please keep the Vote-by-Mail ballot folded the same way as you received it.

## TO MARK YOUR VOTE FILL IN THE OVAL



**VOTE!!!**

## IMPORTANT NOTE!

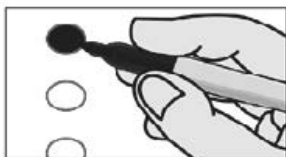
You must fill out and sign the return envelope  
for your Vote-by-Mail ballot to be counted.

---

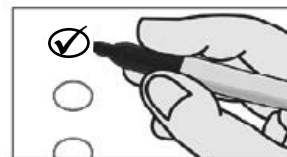
**MAKE YOUR VOTE COUNT...MARK YOUR BALLOT CORRECTLY**

## EXAMPLE

### CORRECT



### INCORRECT



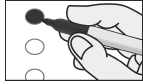
For a demonstration on marking your ballot, please visit our website at [www.voteinfo.net](http://www.voteinfo.net)

# SAMPLE BALLOT / BOLETA DE MUESTRA

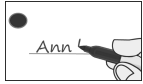
## CONSOLIDATED GENERAL ELECTION / ELECCIÓN GENERAL CONSOLIDADA

**NOVEMBER 2, 2021 / 2 de noviembre de 2021**

Mark your choices on your Sample Ballot, then refer to it when you vote / Marque sus opciones en su Boleta de Muestra, luego refiérase a esta cuando esté votando

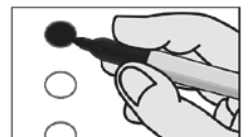


**Instructions to Voters:** To vote, completely fill in the oval to the left of your choice, like the example to the left. To vote for a qualified write-in candidate, write the person's name in the write-in space and fill in the oval. Use a black ink pen or marker to mark your ballot. DO NOT USE RED INK.



**Instrucciones para los Votantes:** Para votar, completamente rellene el óvalo a la izquierda de su deseo, como el ejemplo a la izquierda. Para votar por un candidato calificado por escrito, escriba el nombre de la persona en el espacio por escrito y rellene el óvalo. Use un bolígrafo o marcador de tinta negra para marcar su boleta. NO USE TINTA ROJA.

MEASURE(S) SUBMITTED TO THE VOTERS MEDIDA(S) SOMETIDAS A LOS VOTANTES
CITY CIUDAD
CITY OF INDIO CIUDAD DE INDIO
<p><b>E CITY OF INDIO NO TAX INCREASE SAFETY/ESSENTIAL CITY SERVICES PROTECTION MEASURE.</b> Shall an ordinance to preserve paramedic and fire protection, 911 response; police gang/drug enforcement programs/neighborhood patrols; address homelessness, protect water quality/delivery; fix streets/potholes; other city services by extending the City's existing 1¢ sales tax until ended by voters, without increasing the tax, providing approximately \$12,000,000 annually, continuing citizens' oversight, annual audits, prohibiting state government from taking funds raised be adopted?</p> <p><b>E MEDIDA DE LA CIUDAD DE INDIO PARA NO AUMENTAR LOS IMPUESTOS SOBRE LA SEGURIDAD/SERVICIOS ESENCIALES DE PROTECCIÓN DE LA CIUDAD.</b> ¿Deberá una ordenanza para preservar la protección contra incendios y paramédicos, respuesta al 911; programas policiales de refuerzo/patrullaje vecindario en contra de las pandillas/drogas; abordar la falta de vivienda, proteger la calidad/subministro del agua; arreglar calles/baches; y otros servicios de la ciudad al extender el impuesto sobre las ventas en la Ciudad de 1 centavo hasta que los votantes lo terminen, sin aumentar el impuesto, proporcionando aproximadamente \$12,000,000 anualmente, con supervisión ciudadana continua, auditorías anuales, prohibiendo a que el gobierno estatal tome los fondos recaudados, ser adoptada?</p>
<input type="radio"/> YES / SÍ
<input type="radio"/> NO / NO



# **SAMPLE BALLOT / BOLETA DE MUESTRA**

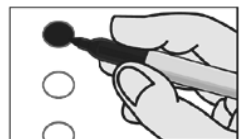
**CONSOLIDATED GENERAL ELECTION / ELECCIÓN GENERAL CONSOLIDADA**

**NOVEMBER 2, 2021 / 2 de noviembre de 2021**

Mark your choices on your Sample Ballot, then refer to it when you vote / Marque sus opciones en su Boleta de Muestra, luego refiérase a esta cuando esté votando

**THIS PAGE IS INTENTIONALLY LEFT BLANK**

**ESTA PÁGINA INTENCIONALMENTE SE DEJÓ EN BLANCO**



# VOTER'S INFORMATION GUIDE SECTION

The following pages contain voter information applicable to your ballot which may include the following items:

- CANDIDATE STATEMENTS
- BALLOT MEASURES
- ANALYSES
- ARGUMENTS IN SUPPORT & IN OPPOSITION

This guide section may not contain a complete list of candidates. A complete list of candidates appears on the Sample Ballot section of this guide. Each candidate's statement in this guide is volunteered by the candidate and is printed at the expense of the candidate unless otherwise determined by the governing body. Deposit amounts required for publication of candidate statements are listed in the Candidate Handbook at [www.voteinfo.net](http://www.voteinfo.net). Additional candidate statements may be available and viewed at [www.voteinfo.net](http://www.voteinfo.net).

Internet website addresses included in any statements are provided by the authors. The County of Riverside assumes no liability for the accuracy or content of websites listed therein.

Arguments in support of or in opposition to the ballot measures are opinions of the authors. The text, grammar, and spelling are as submitted by the authors.

---

## POLLING PLACE REMINDER:

### NO ELECTIONEERING!



All electioneering, voter solicitation, etc. is prohibited within 100 feet in any direction of the room where voters are casting ballots at a polling place and at ballot drop off locations.

Avoid wearing or displaying campaign buttons, hats, t-shirts, and other political items.

CALIFORNIA ELECTIONS CODE §§319.5, 18370, 18371

**MEASURE "E" - CITY OF INDIO**

**ORDINANCE NO. \_\_\_\_**

AN ORDINANCE OF THE CITY OF INDIO AMENDING CHAPTER 34 OF THE INDIO MUNICIPAL CODE TO EXTEND THE EXISTING VOTER APPROVED TRANSACTIONS AND USE TAX ADMINISTERED BY THE CALIFORNIA DEPARTMENT OF TAX AND FEE ADMINISTRATION

WHEREAS, pursuant to California Revenue and Taxation Code Sections 7285.9, the City of Indio (the "City") has the authority to levy a Transactions and Use Tax for general purposes;

WHEREAS, a majority of the voters of the City approved a one percent (1.0%) Transactions and Use Tax at an election held on November 8, 2016 by the adoption of Ordinance No. 1704;

WHEREAS, the City's Transactions and Use Tax Ordinance is found in Chapter 34 ("Taxation") of Title III ("Administration") of the City's Municipal Code;

WHEREAS, Section 34.216 of Chapter 34 sets forth a "Termination Date" of the Transactions and Use Tax in which the tax shall expire twenty years after the "operative date" as defined in Ordinance No. 1704;

WHEREAS, an amendment of the City's Transactions and Use Tax will be submitted to the voters to extend the "Termination Date" of Chapter 3.26 indefinitely unless it is rescinded in a subsequent election by the voters.

NOW, THEREFORE, THE CITY OF INDIO DOES HEREBY ORDAIN AS FOLLOWS:

Section 1. The recitals above are true and correct and incorporated herein as if set forth in full.

Section 2. Section 34.216 ("Termination Date") of Chapter 34 ("Taxation") of Article III ("Administration") is hereby deleted in its entirety from City of Indio Ordinance No. 1704.

Section 3. This ordinance relates to the levying and collecting of the City transactions and use taxes and shall take effect immediately.

Section 4. The City Clerk shall certify the passage of this ordinance and forward a copy of the adopted ordinance to the California Department of Fee and Tax Administration.

PASSED AND ADOPTED by the People of the City of Indio, State of California, on November 2, 2021.

\_\_\_\_\_  
**Mayor**

Attest: \_\_\_\_\_

(Signature)

\_\_\_\_\_  
**City Clerk**



## IMPARTIAL ANALYSIS OF MEASURE “E”

Ballot Measure E asks the voters of the City of Indio to adopt an ordinance that would extend an existing, voter-approved one-percent (1%) sales tax in the City of Indio until ended by a majority vote of the voters (“Extension of the Sales Tax Ordinance”).

The City’s existing sales tax rate of 1%, is part of the total 8.75% sales tax rate imposed in the City. The City’s authority to collect the existing sales tax rate of 1.0% will expire in May 2037. If Measure E is approved, the existing sales tax rate of 1.0% will not expire and the City’s authority to collect the sales tax rate will continue until repealed by the voters.

The City’s 1.0% sales tax is a general tax meaning that revenues from this tax will be deposited into the City’s general fund and may be used for general municipal services, operations and programs including capital projects. The revenue raised will continue to belong to the City and would not be shared with the State or any other governmental entity. It is estimated by the City’s Finance Director that the City’s sales tax rate of 1.0% raises approximately \$12 million per year in general fund revenue for the City.

The tax collected and any expenditures of revenue collected from the tax will continue to be subject to an annual independent financial audit, which is a public record. In addition, the independent financial audit shall continue to be reviewed annually by the City’s Citizen Finance Advisory Commission at a public meeting. The financial audit along with the Commission’s analysis, findings and recommendations shall continue to be reported to the City Council at a public meeting.

Article XIIC of the California Constitution, commonly known as Proposition 218, requires that the proposed extension of the City’s sales tax rate of 1.0% must be approved by a majority of the voters voting on the measure.

On July 21, 2021, the City Council unanimously approved the Extension of the Sales Tax Ordinance, attached to Resolution No. 10229, and authorized its placement on the ballot. A full copy of the ordinance is printed in these ballot materials.

A “Yes” vote on Measure E authorizes the City to continue to collect the existing sales tax rate of 1% until repealed by the voters.

A “No” vote is a vote against the extension of the existing sales tax. The sales tax will expire in May 2037.

Measure E would be approved if it received a simple majority of “Yes” votes.

By: Roxanne Diaz, City Attorney

## ARGUMENT IN FAVOR OF MEASURE “E”

**Protect the essential public safety services that keep Indio’s schools, parks, and neighborhoods safe, with NO increase in taxes—vote YES on E.**

YES on E maintains police officers, firefighters and paramedics, upgrades 911 communications systems, replaces outdated fire trucks and ambulances, and provides after school programs that keep kids off the streets and out of trouble.

It’s shameful our 911 dispatch center, police station, neighborhood fire stations and the emergency operations center are all outdated and don’t comply with current earthquake safety standards.

**YES on E extends existing, voter-approved funding to give Indio’s police officers, firefighters, and paramedics the tools they need to keep us safe AND healthy.**

California’s drought has made conserving water and water delivery more important than ever. YES on E upgrades pipes and other critical infrastructure to effectively deliver safe, clean drinking water to residents and protect Indio’s groundwater resources from being contaminated.

Here’s what Measure E won’t do:

- Measure E does not raise taxes
- Measure E does not create new taxes
- Measure E does not cost the Indio taxpayer one additional cent

**Measure E is accountable** – it continues the citizen’s oversight, annual independent audits, and online expenditure reports for public review the voters were promised. Not one penny can be taken by Sacramento politicians, the county or state. YES on E gives voters the power to end it at any time.

**That’s why local public safety, business and civic leaders, and a unanimous City Council say YES on E.**

Don’t let Sacramento regulations, county money grabs and COVID stop Indio from taking care of local needs! **Vote YES on E** to keep our tax dollars local and Indio voters in control.

For factual information about Measure E or how to vote, visit:  
[www.indio.org](http://www.indio.org)

By: Ben Guitron, Youth Safety Boardmember  
L. Kim Maguire-Hardee, Local Business Owner  
Pedro Rodriguez, Local Funding Citizens Oversight Commissioner  
Gloria Franz, Indio Planning Commissioner  
Gilbert Marrujo, Indio Police Citizens Advisory Boardmember

**NO ARGUMENT FILED AGAINST MEASURE “E”**

---

---

**CAN'T MAKE IT ON ELECTION DAY?  
WE'RE MAKING IT EASY TO VOTE EARLY**

---

---



**AT THE REGISTRAR OF VOTERS OFFICE**

**2720 Gateway Drive, Riverside, CA 92507**

**October 4 through November 1  
(excluding Holidays)**

**Monday through Friday  
8:00 a.m. to 5:00 p.m.**

**Election Day, November 2  
7:00 a.m. to 8:00 p.m.**

---

---

**VOTE-BY-MAIL**

All registered voters will be mailed a ballot in accordance with new legislation recently enacted by the state. Return your Vote-by-Mail ballot by mail or at the following locations:

★ ★ ★ ★ ★	★ ★ ★ ★ ★	★ ★ ★ ★ ★
<b><u>Registrar of Voters</u></b> 2720 Gateway Drive Riverside, CA 92507  <b>October 4 – November 1</b> (excluding holidays) Monday - Friday 8:00 a.m. – 5:00 p.m.  <b>Election Day, November 2</b> 7:00 a.m. – 8:00 p.m.	<b><u>Ballot Drop-Off Locations</u></b>  <b>October 4 – November 1</b> at City Clerk Offices Open During Regular Business Hours  <b>Election Day, November 2</b> 7:00 a.m. – 8:00 p.m.  <b>Registrar of Voters</b> Secure drop box 24 hours a day  See the list of locations online at <a href="http://www.voteinfo.net">www.voteinfo.net</a>	<b><u>Polling Places</u></b>  <b>Election Day, November 2</b> 7:00 a.m. – 8:00 p.m.  See the list of locations online at <a href="http://www.voteinfo.net">www.voteinfo.net</a>

# **Language Services**

The County of Riverside is making voting easier in 2021!

Some locations will have translated sample ballots available for select precincts that can be used as a reference tool when voting.

You may also request one by calling (800) 773-VOTE (8683), or by visiting [www.voteinfo.net](http://www.voteinfo.net). Requests must be received no later than 7 days before the election.

## **Servicios de Idiomas**

¡El Condado de Riverside hace que votar sea más fácil en 2021!

Algunas ubicaciones tendrán boletas de muestra traducidas que estarán disponibles en recintos electorales seleccionados que se podrán usar como una herramienta de referencia al votar.

También puede pedir una llamando al (800) 773-VOTE (8683) o si visita [www.voteinfo.net](http://www.voteinfo.net). Las solicitudes deben recibirse a más tardar 7 días antes de la elección.

## **語言服務**

河邊縣在 2021 年簡化了投票流程!

有些地方會翻譯選票範例，讓特定選區用來作為投票時的參考工具。

您也可以透過撥打 (800) 773-VOTE (8683) 或造訪 [www.voteinfo.net](http://www.voteinfo.net) 索取一份範例。我們接收索取要求的期限至選前 7 天為止。

## **Dịch Vụ Ngôn Ngữ**

Quận Riverside đang nỗ lực để việc bỏ phiếu trở nên dễ dàng hơn vào năm 2021!

Một số địa điểm sẽ dịch sẵn lá phiếu mẫu cho các phân khu bầu cử được chọn, cử tri có thể sử dụng làm công cụ tham khảo khi bỏ phiếu.

Quý vị cũng có thể yêu cầu nhận một lá phiếu mẫu đã dịch sẵn bằng cách gọi điện đến số (800) 773-VOTE (8683) hoặc truy cập [www.voteinfo.net](http://www.voteinfo.net). Quý vị phải gửi yêu cầu trước ngày bầu cử ít nhất 7 ngày.

## **언어 서비스**

Riverside 카운티는 2021 년 투표를 용이하게 합니다!

번역된 견본 투표용지가 선정된 선거구의 일부 투표소에 구비되어 투표 시 참조 도구로 사용할 수 있게 됩니다.

(800) 773-VOTE (8683) 으로 전화, 또는 [www.voteinfo.net](http://www.voteinfo.net) 을 방문하여 요청할 수도 있습니다.요청은 선거 7 일 전까지 접수되어야만 합니다.

## **Mga Serbisyo sa Wika**

Mas padadaliin ng County ng Riverside ang pagboto sa 2021!

Ang ilang lugar ay magkakaroon ng mga sample na balota na isinaling-wika at makukuha sa mga piling presinto na magagamit bilang sanggunian kapag bumoboto.

Maaari ka ring humingi nito sa pamamagitan ng pagtawag sa (800) 773-VOTE (8683), o sa pagbisita sa [www.voteinfo.net](http://www.voteinfo.net). Dapat ay matanggap ang mga kahilingan nang hindi lalagpas sa 7 araw bago ang halalan.



## **Conditional Voter Registration**

Did you forget to register or update your voter registration? No Problem! You can register to vote and vote until 8:00 p.m. on Election Day at the Registrar of Voters office or any polling place. This process is called Conditional Voter Registration (CVR) and is commonly referred to as Same Day Voter Registration. Here's how it works:

1. Visit the Registrar of Voters office or any polling place.
2. Complete a voter registration card or register online at [RegisterToVote.ca.gov](https://RegisterToVote.ca.gov).
3. Vote your ballot.
4. Once the Registrar of Voters processes your registration and determines you are eligible, you will be registered to vote and your ballot will be counted.

To learn more about Conditional Voter Registration, visit [vote.ca.gov](https://vote.ca.gov).

If you have questions regarding Conditional Voter Registration, please call (951) 486-7200 or toll free (800) 773-VOTE (8683).

You may check the status of your voter registration at [www.voteinfo.net/AmIRegistered](https://www.voteinfo.net/AmIRegistered).



## **California Motor Voter**

The California Motor Voter program is making registering to vote at the California Department of Motor Vehicles (DMV) more convenient and secure. All eligible individuals completing driver license or ID card or change of address transactions at the DMV will be registered to vote with the California Secretary of State unless they "opt out" of automatic voter registration.

The California Motor Voter program applies to Californians who are 18 years or older and meet the following criteria:

- A United States citizen and a resident of California.
- Not currently in state or federal prison for the conviction of a felony.
- Not currently found mentally incompetent to vote by a court.

Note: Voter pre-registration is available for those 16 and 17 years of age. Their voter registration will become active automatically when they turn 18.

Before visiting a DMV field office, we recommend making an appointment. Visit <https://www.dmv.ca.gov/portal/dmv/detail/portal/foa/welcome> to get started. You can also use DMV online services (<https://www.dmv.ca.gov/portal/dmv/dmv-online/>) to renew your driver license or ID card or change your address.

If you indicate you're eligible to vote, once you complete your driver license or state ID renewal form transaction online, by mail or in person at the DMV, your voter information is then transmitted securely and electronically to the California Secretary of State.

Please note that drivers with an AB 60 driver's license are not eligible to participate in the California Motor Voter program and are not eligible to vote.

For more information, visit [MotorVoter.sos.ca.gov](https://MotorVoter.sos.ca.gov).

To register to vote online, visit [RegisterToVote.ca.gov](https://RegisterToVote.ca.gov).



# Remote Accessible Vote-by-Mail (RAVBM) in Riverside County

For the November 2, 2021 Consolidated General Election, all voters will receive a ballot in the mail. Riverside County will begin mailing voters their ballots on October 4<sup>th</sup>.

**You can also vote with Remote Accessible Vote-by-Mail.** RAVBM lets you:

- Download, mark, and print your ballot at home
- Use your own assistive technology to read and mark the ballot
- Select the language for your ballot

RAVBM is not “internet voting.” You must print and return your marked ballot.



**You must request your RAVBM ballot by October 26<sup>th</sup>**

## How to vote from home (accessibly!) with RAVBM:

### 1. Request an RAVBM ballot access link

Contact the elections office by phone at (951) 486-7200 or (800) 773-VOTE (8683), by email at [rovweb@rivco.org](mailto:rovweb@rivco.org), or on the web at [www.voteinfo.net](http://www.voteinfo.net).

### 2. Mark your ballot

Use the access link to open your ballot. Review and mark the ballot on your own computer, with your own assistive technology if needed.




### 3. Review and print your ballot

Check your ballot and make corrections. Download and print your ballot.

### 4. Seal and sign the ballot envelope

Put your RAVBM ballot in the envelope you received in the mail. Sign the voter's declaration (punched holes tell you where to sign). Seal the envelope.

### 5. Return your ballot

-  By mail. (Your envelope will include pre-paid postage!)
-  At any drop box in Riverside County.
-  At any voting location or at the Riverside County elections office.

**Questions?** Call Riverside County (800) 773-VOTE (8683)



For voters with disabilities:

Disability Rights California's Voting Hotline: **1 (888) 569-7955**

# VOTER BILL *of* RIGHTS



## ★ YOU HAVE THE FOLLOWING RIGHTS ★

1. **The right to vote if you are a registered voter.** You are eligible to vote if you are:

- ★ a U.S. citizen living in California
- ★ at least 18 years old
- ★ registered where you currently live
- ★ Not currently serving a state or federal prison term for the conviction of a felony, and
- ★ not currently found mentally incompetent to vote by a court

2. **The right to vote if you are a registered voter even if your name is not on the list.**

You will vote using a provisional ballot. Your vote will be counted if elections officials determine that you are eligible to vote.

3. **The right to vote if you are still in line when the polls close.**

4. **The right to cast a secret ballot** without anyone bothering you or telling you how to vote.

5. **The right to get a new ballot if you have made a mistake**, if you have not already cast your ballot. You can:

**Ask an elections official at a polling place** for a new ballot,  
**Exchange your vote-by-mail ballot** for a new one at an elections office, or at your polling place, or  
**Vote using a provisional ballot.**

6. **The right to get help casting your ballot** from anyone you choose, except from your employer or union representative.

7. **The right to drop off your completed vote-by-mail ballot at any polling place** in California.

8. **The right to get election materials in a language other than English** if enough people in your voting precinct speak that language.

9. **The right to ask questions to elections officials about election procedures** and watch the election process. If the person you ask cannot answer your questions, they must send you to the right person for an answer. If you are disruptive, they can stop answering you.

10. **The right to report any illegal or fraudulent election activity** to an elections official or the Secretary of State's office.

### SPECIAL NOTICE

- Polls are open from 7:00 a.m. to 8:00 p.m. on the day indicated in the posted county Voter Information Guide.
- Specific instructions on how to vote, including how to cast a provisional ballot, can be obtained from a poll worker or by reading the information mailed to you by your local elections official.
- If you are a newly registered voter, you may be asked to provide appropriate identification or other documentation according to federal law. But please note that every individual has the right to cast a provisional ballot even if he or she does not provide the documentation.
- It is against the law to represent yourself as being eligible to vote unless you meet all of the requirements to vote under federal and state law.
- It is against the law to tamper with voting equipment.

**If you believe you have been denied any of these rights**, call the Secretary of State's confidential toll-free Voter Hotline at (800) 345-VOTE (8683).



On the web at [www.sos.ca.gov](http://www.sos.ca.gov)



By phone at **(800) 345-VOTE (8683)**



By email at [elections@sos.ca.gov](mailto:elections@sos.ca.gov)

# IMPORTANT DATES



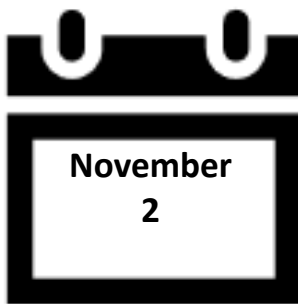
**First day you can vote.** Each eligible registered voter will begin receiving their ballot by mail beginning this day.



**Registration Deadline.** Check your registration status online or by calling our office.



**Early Voting** available at the Registrar of Voters office from 8:00 a.m. - 5:00 p.m., Monday through Friday (excluding holidays).



## Election Day!

**Mail in or drop off** your Vote-by-Mail ballot by today! Mailed-in ballots must be postmarked by this date and received no later than November 9 to be counted.

**In-person voting also available** at your assigned Polling Place or the Registrar of Voters office.

Ballot-Drop off locations at City Clerk Offices, Polling Places and the Registrar of Voters office open from 7:00 a.m. - 8:00 p.m.



**Do you know someone who is not registered to vote? Need to check your voter registration status?**



Check your voter registration status, update your registration information, or register to vote online. Visit [www.voteinfo.net](http://www.voteinfo.net) for more information.



Request a voter registration card be sent by mail to update your registration information, or to register to vote. Call (951) 486-7200 or (800) 773-VOTE (8683) for more information.

# VOTE BY MAIL

## THE VOTING PROCESS IS DIFFERENT!

All registered voters in Riverside County will be mailed a ballot in accordance with new legislation recently enacted by the state.

Return your ballot as soon as possible to ensure that it is included in the first Election Night results!



**Return your ballot by mail:** If you choose to vote at home, you can return your ballot by mail (no postage required). Ballots returned by mail must be postmarked by Election Day and received by November 9, 2021 to be counted.

**Drop off your ballot:** You can drop off your ballot at any secure Ballot Drop-Off box, Early Voting location, Polling Place or the Registrar of Voters office. Please visit our website at [www.voteinfo.net](http://www.voteinfo.net) for location information and hours.

### Remote Accessible Vote by Mail Ballot (RAVBM)

Accessible Vote-by-Mail provides an accessible option for voters to mark their ballots privately and independently. To complete a RAVBM ballot visit [www.voteinfo.net](http://www.voteinfo.net). Your completed ballot and signed Oath of the Voter must be returned to the Registrar of Voters office to be counted. Return your RAVBM ballot by mail or at one of our secure Ballot Drop-Off locations.

# VOTE IN PERSON

The Riverside County Registrar of Voters recommends that voters only use the Polling Place assigned if absolutely necessary, as the generalized use of in-person voting presents risks to public health and safety in light of the COVID-19 pandemic.

Registrar of Voters	Ballot Drop-Off Locations	Polling Places
<b>October 4 – November 1</b> (excluding holidays) Monday - Friday 8:00 a.m. – 5:00 p.m.  <b>Election Day, November 2</b> 7:00 a.m. – 8:00 p.m.	<b>October 4 – November 1</b> at City Clerk Offices Open During Regular Business Hours  <b>Election Day, November 2</b> 7:00 a.m. – 8:00 p.m.  <b>Registrar of Voters</b> Secure drop box 24 hours a day  See the list of locations online at <a href="http://www.voteinfo.net">www.voteinfo.net</a>	<b>Election Day, November 2</b> 7:00 a.m. – 8:00 p.m.  See the list of locations online at <a href="http://www.voteinfo.net">www.voteinfo.net</a>



# Are you...

- ♦ Interested in Learning More About the Voting Process?
- ♦ Detail Oriented?
- ♦ A Team Player?
- ♦ A Problem Solver?
- ♦ Motivated to Serve Your Community?



# BE AN ELECTION OFFICER



We encourage individuals with bilingual skills in Spanish, Tagalog, Korean, Chinese (Cantonese/Mandarin), Vietnamese, and American Sign Language (ASL) to serve their communities as Election Officers.

**Call (951) 486-7341 or (877) 663-9906**

# Tips for California's Military and Overseas Voters

Taking part in elections is more convenient than ever for Californians serving in the military or living outside the United States. It begins when you register to vote as a military or overseas voter and receive election materials by mail, fax, or email.

- **Start early.** California's county elections officials begin sending ballots to military and overseas voters 60 days before Election Day. Fill out a voter registration application early at [RegisterToVote.ca.gov](https://RegisterToVote.ca.gov) to ensure that you receive your voting materials in time.
- **Know your options.** When registering to vote as a military or overseas voter, you can choose to have your ballot mailed, faxed, or emailed to you. You may return your voted ballot to your county elections official by mail or, in certain circumstances, by fax. If you meet the requirements to return your ballot by fax, you must also fax the Oath of Voter form (available from your county elections official) waiving your right to a confidential ballot.
- **Stay in touch.** Once you register as a military or overseas voter, you will continue to receive a ballot and election materials from your county elections official before each election. We encourage you to update your registration each year, if needed; however, you *must* re-register to vote if you change your address, your name, or your political party preference, or if you do not participate in four consecutive statewide general elections. Visit [www.sos.ca.gov/elections/voter-registration/military-overseas-voters/](https://www.sos.ca.gov/elections/voter-registration/military-overseas-voters/) for more election resources designed especially for you.

## Dates to remember:

**October 18:** last day to register to vote and request your ballot

**October 26:** last day to update or change how you want to receive your ballot

**November 2:** Election Day. Mailed ballots must be postmarked on or before Election Day **and** received by your county elections office no later than November 9. Faxed ballots must be delivered to your county elections office by close of polls, no later than 8:00 p.m. Pacific Standard Time, on Election Day.

## For more information contact:

California Secretary of State



(800) 345-VOTE



[www.sos.ca.gov/elections/voter-registration/military-overseas-voters/](https://www.sos.ca.gov/elections/voter-registration/military-overseas-voters/)

Federal Voting Assistance Program



(800) 438-VOTE



[www.fvap.gov](https://www.fvap.gov)

FROM



FIRST  
CLASS  
POSTAGE

PLACE STAMP HERE

DID YOU SIGN YOUR REQUEST?

REGISTRAR OF VOTERS  
2724 GATEWAY DRIVE  
RIVERSIDE CA 92507-0923



## ACCOMMODATIONS FOR VOTERS WITH DISABILITIES

A "YES" or "NO" printed under the disabled symbol/arrow on the back cover of this guide indicates whether or not your nearest polling place is accessible to physically disabled voters. Please be advised of the following alternate ways you may cast your ballot.

- **By Mail** - Your ballot must be received at the Registrar of Voters office no later than 8:00 p.m. on Election Day or be postmarked on or before Election Day and received no later than seven days after Election Day to be counted. You may request a Vote-by-Mail ballot for all future Elections. Simply contact the Registrar of Voters office by calling (951) 486-7200, (800) 773-VOTE (8683), California Relay Service (Dial 711).
- **Early Voting** - You may vote at the Registrar of Voters office located at 2720 Gateway Drive, Riverside, CA 92507, October 4 - November 1 (excluding Holidays), Monday through Friday, 8:00 a.m. to 5:00 p.m.; and Election Day, November 2, 7:00 a.m. to 8:00 p.m. Please visit our website at [www.voteinfo.net](http://www.voteinfo.net) for additional early voting locations and information.
- **Remote Accessible Vote by Mail Ballot (RAVBM)** - Accessible Vote-by-Mail provides an accessible option for voters to mark their ballots privately and independently. To complete a RAVBM ballot visit [www.voteinfo.net](http://www.voteinfo.net). Your completed ballot and signed Oath of the Voter must be returned to the Registrar of Voters office no later than 8:00 p.m. on Election Day or be postmarked on or before Election Day and received no later than seven days after Election Day to be counted.
- **Curbside Voting on Election Day** - If you are unable to enter the location due to a physical disability, you may request Curbside Voting at any polling place. Curbside Voting doorbells may be available at some polling places. If you require Curbside Voting assistance you may call (877) 663-9906 before going to a polling place and/or when you arrive at the facility. An Election Officer will be contacted prior to your arrival to meet you at the curb.

REGISTRAR OF VOTERS  
2724 GATEWAY DRIVE  
RIVERSIDE, CA 92507-0918



NONPROFIT  
U.S. POSTAGE  
**PAID**  
Registrar of Voters  
Riverside

**REQUEST TRANSLATED ELECTION MATERIAL**  
**VOTER INFORMATION:**

NAME AS REGISTERED

RESIDENCE ADDRESS AS REGISTERED

CITY STATE ZIP

**MAIL MATERIALS TO:**

ADDRESS (IF DIFFERENT)

CITY STATE ZIP

I declare, under penalty of perjury, that the information provided is true and correct to the best of my knowledge.

**SIGNATURE  
REQUIRED**

SIGNATURE OF VOTER

DATE

33-BCov 11-02-2021

Translated election materials are available for select precincts. If you would like to receive materials in another language, complete and return this postcard to the Registrar of Voters office. Translated materials will also be available at the Registrar of Voters office and at all polling places.

I wish to receive election materials in:

☐ Español-Spanish

I wish to receive translated reference ballots in: (select one only)

☐ 한국어 - Korean

☐ Tiếng Việt - Vietnamese

☐ Tagalog - Tagalog

☐ 中文 - Chinese

↓ POSTMASTER DELIVER TO ↓

**OPT-IN TO VIEW YOUR  
COUNTY VOTER INFORMATION  
GUIDE ONLINE!**

**You can view all future  
County Voter Information Guides  
online with 24/7 access at your  
convenience.**

**It's easy and great for the  
environment.**

Please visit our website at [www.voteinfo.net](http://www.voteinfo.net)  
or call (951) 486-7200 or (800) 773-VOTE (8683)

**BALLOT  
TYPE** 003

**VOTE EARLY**

**IT'S QUICK**

**IT'S EASY**

**IT'S CONVENIENT**

**GET OUT OF LINE ON ELECTION DAY!**

**VOTE-BY-MAIL**

↓ LOCATION OF YOUR POLLING PLACE ↓



ACCESS?

