

# County of Riverside



## Registrar of Voters

Polling Place Location  
on Back Cover

Polls Open  
April 12, 2022  
7:00 a.m. to 8:00 p.m.

.....  
Registration Deadline  
March 28, 2022  
.....

Quick • Easy • Convenient

This election every voter  
receives a Vote-By-Mail ballot.  
Additional Information Inside  
.....

Request Language Assistance  
Form on Back Cover to receive  
election material translated in  
available selected languages.

**AVISO IMPORTANTE**  
Una traducción en Español de  
esta Guía de Información del  
Condado Para el Votante puede  
obtenerse en la oficina del Registro  
de Votantes llamando al (951) 486- 7200  
o (800) 773-VOTE (8683) o visite nuestro  
sitio web [www.voteinfo.net](http://www.voteinfo.net)

# City of Moreno Valley Special Vacancy Election

*Tuesday, April 12, 2022*  
*County Voter Information Guide*

**IMPORTANT!**  
**VOTING HAS CHANGED! DETAILS INSIDE**



**COUNTY OF RIVERSIDE REGISTRAR OF VOTERS**  
2720 Gateway Drive, Riverside, CA 92507-0918  
(951) 486-7200 • (800) 773-VOTE (8683) • California Relay Service (Dial 711)  
Mailing Address: 2724 Gateway Drive, Riverside, CA 92507-0918  
[www.voteinfo.net](http://www.voteinfo.net)

# THIS ELECTION VOTING IS DIFFERENT



## VOTE-BY-MAIL

**Vote at home using your Vote-By-Mail ballot**

No Postage Required

Quick, easy, convenient...

from the comfort of your home!

OR

## BALLOT DROP-OFF LOCATION

**at the Registrar of Voters Office or at the  
Moreno Valley City Clerk's Office**

No Postage Required



OR

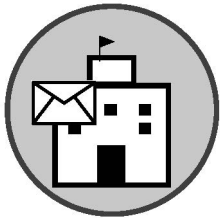
## POLLING PLACE

**Vote in-person at your assigned Polling Place in  
the City of Moreno Valley Council District 1**

Election Day, April 12, 7:00 a.m. to 8:00 p.m.

**Visit our website...**

for a list of polling places!



For more information visit [www.voteinfo.net](http://www.voteinfo.net)  
or call (951) 486-7200 or (800) 773-VOTE (8683)



**REBECCA SPENCER**  
Registrar of Voters

**ART TINOCO**  
Assistant Registrar of Voters

**REGISTRAR OF VOTERS**  
COUNTY OF RIVERSIDE

Dear Riverside County Voter,

Please note – this year voting is different! This Voter Information Guide contains information for the April 12, 2022, City of Moreno Valley, Council District 1, Special Vacancy Election. In an effort to reduce the spread of COVID-19 and in accordance with State Law, the Riverside County Registrar of Voters will be deploying a new election model for the upcoming April 12, 2022 Special Election. This will offer our voters more ways to vote safely. Each eligible registered voter for the April 12, 2022 Special Election will receive a ballot by mail beginning Monday, March 14, 2022.

Voters can verify their voter registration at [voterstatus.sos.ca.gov](https://voterstatus.sos.ca.gov) or register to vote at [registertovote.ca.gov](https://registertovote.ca.gov).

- Your Vote-By-Mail ballot may be returned at any of our secure Ballot Drop-Off locations that will be available beginning March 14, 2022 or via USPS (no postage required).
- We will be operating at the Moreno Valley City Clerk's Office and any Polling Place from 7:00 a.m. until close of polls at 8:00 p.m. on Election Day, April 12, 2022.
- You may track your ballot by registering at [WheresMyBallot.sos.ca.gov](https://WheresMyBallot.sos.ca.gov).
- A list of all Ballot Drop-Off locations and Polling Places is posted at [www.voteinfo.net](https://www.voteinfo.net).

The Riverside County Registrar of Voters recommends that voters only use the in-person Polling Places if absolutely necessary, as the generalized use of in-person voting presents risks to public health and safety in light of the COVID-19 pandemic.

Please feel free to contact the Riverside County Registrar of Voters at (951) 486-7200 with any questions or concerns regarding the upcoming April 12, 2022, City of Moreno Valley, Council District 1, Special Vacancy Election.

Sincerely,

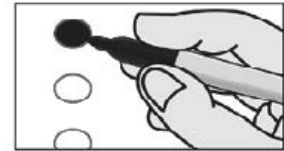
**REBECCA SPENCER**  
Registrar of Voters

# HOW TO MARK YOUR OFFICIAL PAPER BALLOT

Please refer to the following instructions on how to properly complete your Official Paper Ballot:

- Completely fill in the oval next to your choice like the example provided.
- Check both front and back of ballot for voting contests.
- Use a black ink pen or marker. Do not use red ink.
- Completely filling in the oval is preferred.
- Vote for no more than the number of votes allowed in each contest (e.g., vote for one, vote for no more than two, etc.).
- Please keep the Vote-by-Mail ballot folded the same way as you received it.

## TO MARK YOUR VOTE FILL IN THE OVAL



**VOTE!!!**

## IMPORTANT NOTE!

You must fill out and sign the return envelope  
for your Vote-by-Mail ballot to be counted.

---

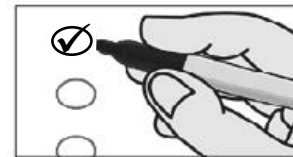
**MAKE YOUR VOTE COUNT...MARK YOUR BALLOT CORRECTLY**

## EXAMPLE

### CORRECT

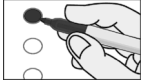


### INCORRECT



For a demonstration on marking your ballot, please visit our website at [www.voteinfo.net](http://www.voteinfo.net)

**OFFICIAL BALLOT / BOLETA OFICIAL**  
**CITY OF MORENO VALLEY SPECIAL VACANCY ELECTION /**  
**ELECCIÓN DE VACANTE ESPECIAL DE LA CIUDAD DE MORENO VALLEY**  
**RIVERSIDE COUNTY / CONDADO DE RIVERSIDE**  
**APRIL 12, 2022 / 12 DE ABRIL DE 2022**



**Instructions to Voters:** To vote, completely fill in the oval to the left of your choice, like the example to the left. To vote for a qualified write-in candidate, write the person's name in the write-in space and fill in the oval. Use a black ink pen or marker to mark your ballot. **DO NOT USE RED INK.**



**Instrucciones para los Votantes:** Para votar, completamente rellene el óvalo a la izquierda de su deseo, como el ejemplo a la izquierda. Para votar por un candidato calificado por escrito, escriba el nombre de la persona en el espacio por escrito y rellene el óvalo. Use un bolígrafo o marcador de tinta negra para marcar su boleta. **NO USE TINTA ROJA.**

<b>NONPARTISAN OFFICES CARGOS NO PARTIDARIOS</b>
<b>CITY CIUDAD</b>
<b>CITY OF MORENO VALLEY CIUDAD DE MORENO VALLEY</b>
<b>Member, City Council, District 1, Short Term</b> <b>Miembro, Concejo Municipal, Distrito 1, Plazo Corto</b>  <b>Vote for One / Vote por Uno</b>
<input type="radio"/> <b>ELENA BACA-SANTA CRUZ</b> <small>Employee Association President Presidenta Asociación de Empleados</small>
<input type="radio"/> <b>RENE R. RAMOS</b> <small>Youth Care Worker Trabajador de Cuidado Juvenil</small>
<input type="radio"/> <b>GERARDO MERCADO</b> <small>Director / Design Professional Director / Profesional de Diseño</small>
<input type="radio"/>

# VOTER'S INFORMATION GUIDE SECTION

The following pages contain voter information applicable to your ballot which may include the following items:

## ■ CANDIDATE STATEMENTS

This guide section may not contain a complete list of candidates. A complete list of candidates appears on the Sample Ballot section of this guide. Each candidate's statement in this guide is volunteered by the candidate and is printed at the expense of the candidate unless otherwise determined by the governing body. Deposit amounts required for publication of candidate statements are listed in the Candidate Handbook at [www.voteinfo.net](http://www.voteinfo.net). Additional candidate statements may be available and viewed at [www.voteinfo.net](http://www.voteinfo.net).

Statements made on the following pages represent the views of the authors and are not endorsed by the County of Riverside. Internet website addresses included in any statements are provided by the authors. The County of Riverside assumes no liability for the accuracy or content of websites listed therein.

The text, grammar, and spelling are as submitted by the authors.

---

---

## POLLING PLACE REMINDER:

### NO ELECTIONEERING!



All electioneering, voter solicitation, etc. is prohibited within 100 feet in any direction of the room where voters are casting ballots at a Polling Place and at ballot drop off locations.

Avoid wearing or displaying campaign buttons, hats, t-shirts, and other political items.

CALIFORNIA ELECTIONS CODE §§319.5, 18370, 18371

**CANDIDATE STATEMENT FOR  
CITY COUNCIL MEMBER,  
CITY OF MORENO VALLEY, DISTRICT 1, SHORT TERM**

**ELENA BACA SANTA CRUZ**  
**OCCUPATION: Employee Association President**  
**EDUCATION AND QUALIFICATIONS:**

My family has a long tradition of serving this community. My mother Victoria Baca held this seat for many years, and it is my honor to build on her legacy of compassion, hard work, and helping those who need it.

As your councilmember, I pledge to focus on:

- Creating high-quality local jobs
- Ensuring our kids receive the education they deserve
- Increasing public safety through initiatives that address homelessness, and more
- Making infrastructure improvements such as bettering our roads

I also want to return trust in our local government, something critical to our city's long-term success. During the campaign I will knock on every door I can in District One, while maintaining safe Covid-19 protocols. I will also call voters and make myself available via Zoom, to ensure all local voices are accurately and powerfully represented.

My mother was a job creator and so am I. But I also bring with me a wealth of experience from my years as a Union Representative working in education. I'm committed to bettering the lives of all Moreno Valley citizens and I'm ready to move our city forward into an incredible future.

I would be honored to have your vote for City Council.

[www.votebacasantacruz.com](http://www.votebacasantacruz.com)

**CANDIDATE STATEMENT FOR  
CITY COUNCIL MEMBER,  
CITY OF MORENO VALLEY, DISTRICT 1, SHORT TERM**

**RENE R. RAMOS** **AGE: 52**  
**OCCUPATION: Youth Care Worker**  
**EDUCATION AND QUALIFICATIONS:**

**EDUCATION/QUALIFICATIONS:** Parent/40 Year Moval Resident / WESTEC COLLEGE/Moval Little League Coach and Food Bank Volunteer. I will fight for immigrants, youth, seniors and the disabled! I will fight to improve the safety of Indian Street! I attended Moval public schools and was an Air Force Junior Officer Cadet. I love Moval! The voice of the middle-class needs to be heard at City Hall!

**SAFETY/CORONA VIRUS:** Our streets are a mess! Potholes and UGLY Landscaping, you name it we got it! A car killed a child walking by my house in 2017 because of bad street lighting. A driver smashed into my house on Indian street in early 2020. I can't find any CORONA VIRUS test kits for my kids! HOMELESS wander our streets!

**WHAT I'LL DO ABOUT SAFETY/CORONA VIRUS.** I will promote the SAFE ROUTES TO SCHOOL PROGRAM, a federal grant program that promotes walking and biking to school. I will fight to promote a social media hotline for the reporting of potholes. The City must purchase CORONA VIRUS test kits for direct distribution to residents.

**GOVERNMENT:** I will push to hire a permanent City Attorney! I was raised by a strict Mexican-American mother. Civility not Silliness!

**VOTE RAMOS!**

[www.ramosforcitycouncil.com](http://www.ramosforcitycouncil.com)

[www.facebook.com/reneramosforcitycouncil](https://www.facebook.com/reneramosforcitycouncil)

[www.twitter.com/renecitycouncil](https://www.twitter.com/renecitycouncil)

<https://www.instagram.com/ramosforcitycouncil/>

**CANDIDATE STATEMENT FOR  
CITY COUNCIL MEMBER,  
CITY OF MORENO VALLEY, DISTRICT 1, SHORT TERM**

**GERARDO MERCADO** **AGE: 45**  
**OCCUPATION: Director / Design Professional**  
**EDUCATION AND QUALIFICATIONS:**

It is time for a new voice in Moreno Valley's District 1. I am running for City Council because I am proud of our community and believe in our future. District 1 needs an experienced leader to fill the void left in this vacant council seat. I have proudly called Moreno Valley home for 20 years. I will always put constituents first by considering what is best for our diverse groups of residents.

As your Councilman, I will be a tireless advocate and will deliver results for you by:

- Ensuring police officers and firefighters have the resources they need to keep us safe
- Ensuring voter approved tax dollars are spent efficiently and for the intended purpose
- Helping our local businesses thrive and attracting innovative high-wage employers
- Attracting businesses and opportunities so residents do not feel forced to commute
- Advocating for youth programs that keep our youth out of trouble and help them succeed
- Addressing homelessness through housing, long-term care and job placement
- Working to improve our infrastructure and community amenities

I would be honored to have your vote. Together, we can make a positive difference in Moreno Valley.

Visit [www.facebook.com/mercadoformoval](https://www.facebook.com/mercadoformoval) or call me at 951.517.8147

---

---

**CAN'T MAKE IT ON ELECTION DAY?  
WE'RE MAKING IT EASY TO VOTE EARLY**

---

---



**AT THE REGISTRAR OF VOTERS OFFICE**

**2720 Gateway Drive, Riverside, CA 92507**

**March 14 through April 11  
(excluding Holidays)**

**Monday through Friday  
8:00 a.m. to 5:00 p.m.**




**Election Day, April 12  
7:00 a.m. to 8:00 p.m.**

---

---

**VOTE-BY-MAIL**

All registered voters will be mailed a ballot in accordance with new legislation recently enacted by the state. Return your Vote-by-Mail ballot by mail or at the following locations:

 <b><u>Registrar of Voters</u></b>	 <b><u>Ballot Drop-Off Locations</u></b>	 <b><u>Polling Places</u></b>
<p>2720 Gateway Drive Riverside, CA 92507</p> <p><b>March 14 through April 11</b> Monday - Friday 8:00 a.m. to 5:00 p.m. (excluding Holidays)</p> <p><b>Election Day, April 12</b> 7:00 a.m. to 8:00 p.m.</p>	<p><b>March 14 – April 11</b> at the Moreno Valley City Clerk's Office Open During Regular Business Hours</p> <p><b>Election Day, April 12</b> 7:00 a.m. – 8:00 p.m.</p> <p><b>Registrar of Voters</b> Secure drop box 24 hours a day</p> <p>See the list of locations online at <a href="http://www.voteinfo.net">www.voteinfo.net</a></p>	<p><b>Election Day, April 12</b> 7:00 a.m. – 8:00 p.m.</p> <p>See the list of locations online at <a href="http://www.voteinfo.net">www.voteinfo.net</a></p>



## **Language Services**

The County of Riverside is making voting easier in 2022!

Some locations will have translated sample ballots available for select precincts that can be used as a reference tool when voting.

You may also request one by calling (800) 773-VOTE (8683), or by visiting [www.voteinfo.net](http://www.voteinfo.net). Requests must be received no later than 7 days before the election.

## **Servicios de Idiomas**

¡El Condado de Riverside hace que votar sea más fácil en 2022!

Algunas ubicaciones tendrán boletas de muestra traducidas que estarán disponibles en recintos electorales seleccionados que se podrán usar como una herramienta de referencia al votar.

También puede pedir una llamando al (800) 773-VOTE (8683) o si visita [www.voteinfo.net](http://www.voteinfo.net). Las solicitudes deben recibirse a más tardar 7 días antes de la elección.

## **Mga Serbisyo sa Wika**

Mas padadaliin ng County ng Riverside ang pagboto sa 2022!

Ang ilang lugar ay magkakaroon ng mga sample na balota na isinaling-wika at makukuha sa mga piling presinto na magagamit bilang sanggunian kapag bumoboto.

Maaari ka ring humingi nito sa pamamagitan ng pagtawag sa (800) 773-VOTE (8683), o sa pagbisita sa [www.voteinfo.net](http://www.voteinfo.net). Dapat ay matanggap ang mga kahilingan nang hindi lalagpas sa 7 araw bago ang halalan.



## **Conditional Voter Registration**

Did you forget to register or update your voter registration? No Problem! You can register to vote and vote until 8:00 p.m. on Election Day at the Registrar of Voters office or any polling place. This process is called Conditional Voter Registration (CVR) and is commonly referred to as Same Day Voter Registration. Here's how it works:

1. Visit the Registrar of Voters office or any polling place.
2. Complete a voter registration card or register online at [RegisterToVote.ca.gov](https://RegisterToVote.ca.gov).
3. Vote your ballot.
4. Once the Registrar of Voters processes your registration and determines you are eligible, you will be registered to vote and your ballot will be counted.

To learn more about Conditional Voter Registration, visit [vote.ca.gov](https://vote.ca.gov).

If you have questions regarding Conditional Voter Registration, please call (951) 486-7200 or toll free (800) 773-VOTE (8683).

You may check the status of your voter registration at [www.voteinfo.net/AmIRegistered](https://www.voteinfo.net/AmIRegistered).



## **California Motor Voter**

The California Motor Voter program is making registering to vote at the California Department of Motor Vehicles (DMV) more convenient and secure. All eligible individuals completing driver license or ID card or change of address transactions at the DMV will be registered to vote with the California Secretary of State unless they "opt out" of automatic voter registration.

The California Motor Voter program applies to Californians who are 18 years or older and meet the following criteria:

- A United States citizen and a resident of California.
- Not currently in state or federal prison for the conviction of a felony.
- Not currently found mentally incompetent to vote by a court.

Note: Voter pre-registration is available for those 16 and 17 years of age. Their voter registration will become active automatically when they turn 18.

Before visiting a DMV field office, we recommend making an appointment. Visit <https://www.dmv.ca.gov/portal/dmv/detail/portal/foa/welcome> to get started. You can also use DMV online services (<https://www.dmv.ca.gov/portal/dmv/dmv-online/>) to renew your driver license or ID card or change your address.

If you indicate you're eligible to vote, once you complete your driver license or state ID renewal form transaction online, by mail or in person at the DMV, your voter information is then transmitted securely and electronically to the California Secretary of State.

Please note that drivers with an AB 60 driver's license are not eligible to participate in the California Motor Voter program and are not eligible to vote.

For more information, visit [MotorVoter.sos.ca.gov](https://MotorVoter.sos.ca.gov).

To register to vote online, visit [RegisterToVote.ca.gov](https://RegisterToVote.ca.gov).



# Remote Accessible Vote-by-Mail (RAVBM) in Riverside County

For the April 12, 2022, City of Moreno Valley, Council District 1, Special Vacancy Election, all voters will receive a ballot in the mail. Riverside County will begin mailing voters their ballots on March 14<sup>th</sup>.

**You can also vote with Remote Accessible Vote-by-Mail.** RAVBM lets you:

- Download, mark, and print your ballot at home
- Use your own assistive technology to read and mark the ballot
- Select the language for your ballot

RAVBM is not “internet voting.” You must print and return your marked ballot.



**You must request your RAVBM ballot by April 5<sup>th</sup>**

## How to vote from home (accessibly!) with RAVBM:

### 1. Request an RAVBM ballot access link

Contact the elections office by phone at (951) 486-7200 or (800) 773-VOTE (8683), by email at [rovweb@rivco.org](mailto:rovweb@rivco.org), or on the web at [www.voteinfo.net](http://www.voteinfo.net).

### 2. Mark your ballot

Use the access link to open your ballot. Review and mark the ballot on your own computer, with your own assistive technology if needed.




### 3. Review and print your ballot

Check your ballot and make corrections. Download and print your ballot.

### 4. Seal and sign the ballot envelope

Put your RAVBM ballot in the envelope you received in the mail. Sign the voter’s declaration (punched holes tell you where to sign). Seal the envelope.

### 5. Return your ballot

-  By mail. (Your envelope will include pre-paid postage!)
-  At any drop box in Riverside County.
-  At any voting location or at the Riverside County elections office.

**Questions?** Call Riverside County (800) 773-VOTE (8683)



For voters with disabilities:

Disability Rights California’s Voting Hotline: **1 (888) 569-7955**

# VOTER BILL *of* RIGHTS



## ★ YOU HAVE THE FOLLOWING RIGHTS ★

1. **The right to vote if you are a registered voter.** You are eligible to vote if you are:

- ★ a U.S. citizen living in California
- ★ at least 18 years old
- ★ registered where you currently live
- ★ Not currently serving a state or federal prison term for the conviction of a felony, and
- ★ not currently found mentally incompetent to vote by a court

2. **The right to vote if you are a registered voter even if your name is not on the list.**

You will vote using a provisional ballot. Your vote will be counted if elections officials determine that you are eligible to vote.

3. **The right to vote if you are still in line when the polls close.**

4. **The right to cast a secret ballot** without anyone bothering you or telling you how to vote.

5. **The right to get a new ballot if you have made a mistake**, if you have not already cast your ballot. You can:

- Ask an elections official at a polling place** for a new ballot,
- Exchange your vote-by-mail ballot** for a new one at an elections office, or at your polling place, or
- Vote using a provisional ballot.**

6. **The right to get help casting your ballot** from anyone you choose, except from your employer or union representative.

7. **The right to drop off your completed vote-by-mail ballot at any polling place** in California.

8. **The right to get election materials in a language other than English** if enough people in your voting precinct speak that language.


9. **The right to ask questions to elections officials about election procedures** and watch the election process. If the person you ask cannot answer your questions, they must send you to the right person for an answer. If you are disruptive, they can stop answering you.

10. **The right to report any illegal or fraudulent election activity** to an elections official or the Secretary of State's office.

### SPECIAL NOTICE

- Polls are open from 7:00 a.m. to 8:00 p.m. on the day indicated in the posted county Voter Information Guide.
- Specific instructions on how to vote, including how to cast a provisional ballot, can be obtained from a poll worker or by reading the information mailed to you by your local elections official.
- If you are a newly registered voter, you may be asked to provide appropriate identification or other documentation according to federal law. But please note that every individual has the right to cast a provisional ballot even if he or she does not provide the documentation.
- It is against the law to represent yourself as being eligible to vote unless you meet all of the requirements to vote under federal and state law.
- It is against the law to tamper with voting equipment.

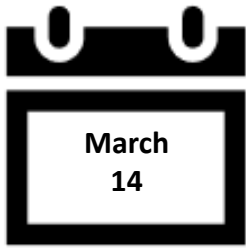
**If you believe you have been denied any of these rights**, call the Secretary of State's confidential toll-free Voter Hotline at (800) 345-VOTE (8683).

 On the web at [www.sos.ca.gov](http://www.sos.ca.gov)

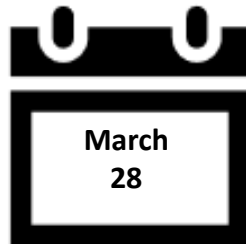
 By phone at **(800) 345-VOTE (8683)**

 By email at [elections@sos.ca.gov](mailto:elections@sos.ca.gov)

# IMPORTANT DATES



**First day you can vote.** Each eligible registered voter will begin receiving their ballot by mail beginning this day.



**Registration Deadline.** Check your registration status online or by calling our office.



**Early Voting** available at the Registrar of Voters office from 8:00 a.m. - 5:00 p.m., Monday through Friday (excluding holidays).



## Election Day!

**Mail in or drop off** your Vote-by-Mail ballot by today! Mailed-in ballots must be postmarked by this date and received no later than April 19 to be counted.

**In-person voting also available** at your assigned Polling Place or the Registrar of Voters office.

Ballot-Drop off locations at the Moreno Valley City Clerk's Office, Polling Places and the Registrar of Voters office open from 7:00 a.m. - 8:00 p.m.



**Do you know someone who is not registered to vote? Need to check your voter registration status?**



Check your voter registration status, update your registration information, or register to vote online. Visit [www.voteinfo.net](http://www.voteinfo.net) for more information.



Request a voter registration card be sent by mail to update your registration information, or to register to vote. Call (951) 486-7200 or (800) 773-VOTE (8683) for more information.

# VOTE BY MAIL

## THE VOTING PROCESS IS DIFFERENT!

All registered voters in the City of Moreno Valley, City Council District 1, Special Vacancy Election, will be mailed a ballot in accordance with new legislation recently enacted by the state.



Return your ballot as soon as possible to ensure that it is included in the first Election Night results!

**Return your ballot by mail:** If you choose to vote at home, you can return your ballot by mail (no postage required). Ballots returned by mail must be postmarked by Election Day and received by April 19, 2022 to be counted.

**Drop off your ballot:** You can drop off your ballot at any secure Ballot Drop-Off box, Moreno Valley City Clerk's Office, Polling Place or the Registrar of Voters Office. Please visit our website at [www.voteinfo.net](http://www.voteinfo.net) for location information and hours.

### Remote Accessible Vote by Mail Ballot (RAVBM)

Accessible Vote-by-Mail provides an accessible option for voters to mark their ballots privately and independently. To complete a RAVBM ballot visit [www.voteinfo.net](http://www.voteinfo.net). Your completed ballot and signed Oath of the Voter must be returned to the Registrar of Voters office to be counted. Return your RAVBM ballot by mail or at one of our secure Ballot Drop-Off locations.

# VOTE IN PERSON

The Riverside County Registrar of Voters recommends that voters only use the Polling Place assigned if absolutely necessary, as the generalized use of in-person voting presents risks to public health and safety in light of the COVID-19 pandemic.

Registrar of Voters	Ballot Drop-Off Locations	Polling Places
<p><b>March 14 – April 11</b> Monday - Friday 8:00 a.m. – 5:00 p.m. (excluding Holidays)</p> <p><b>Election Day, April 12</b> 7:00 a.m. – 8:00 p.m.</p>	<p><b>March 14 – April 11</b> at the Moreno Valley City Clerk's Office Open During Regular Business Hours</p> <p><b>Election Day, April 12</b> 7:00 a.m. – 8:00 p.m.</p> <p><b>Registrar of Voters</b> Secure drop box 24 hours a day</p> <p>See the list of locations online at <a href="http://www.voteinfo.net">www.voteinfo.net</a></p>	<p><b>Election Day, April 12</b> 7:00 a.m. – 8:00 p.m.</p> <p>See the list of locations online at <a href="http://www.voteinfo.net">www.voteinfo.net</a></p>

FROM

\_\_\_\_\_  
\_\_\_\_\_



DID YOU SIGN YOUR REQUEST?

**REGISTRAR OF VOTERS  
2724 GATEWAY DRIVE  
RIVERSIDE CA 92507-0923**



## **ACCOMMODATIONS FOR VOTERS WITH DISABILITIES**

A "YES" or "NO" printed under the disabled symbol/arrow on the back cover of this guide indicates whether or not your nearest polling place is accessible to physically disabled voters. Please be advised of the following alternate ways you may cast your ballot.

- **By Mail** - Your ballot must be received at the Registrar of Voters office no later than 8:00 p.m. on Election Day or be postmarked on or before Election Day and received no later than seven days after Election Day to be counted. You may request a Vote-by-Mail ballot for all future Elections. Simply contact the Registrar of Voters office by calling (951) 486-7200, (800) 773-VOTE (8683), California Relay Service (Dial 711).
- **Early Voting** - You may vote at the Registrar of Voters office located at 2720 Gateway Drive, Riverside, CA 92507, March 14 - April 11 (excluding Holidays), Monday through Friday, 8:00 a.m. to 5:00 p.m.; and Election Day, April 12, 7:00 a.m. to 8:00 p.m.
- **Remote Accessible Vote by Mail Ballot (RAVBM)** - Accessible Vote-by-Mail provides an accessible option for voters to mark their ballots privately and independently. To complete a RAVBM ballot visit [www.voteinfo.net](http://www.voteinfo.net). Your completed ballot and signed Oath of the Voter must be returned to the Registrar of Voters office no later than 8:00 p.m. on Election Day or be postmarked on or before Election Day and received no later than seven days after Election Day to be counted.
- **Curbside Voting on Election Day** - If you are unable to enter the location due to a physical disability, you may request Curbside Voting at any polling place. Curbside Voting doorbells may be available at some polling places. If you require Curbside Voting assistance you may call (877) 663-9906 before going to a polling place and/or when you arrive at the facility. An Election Officer will be contacted prior to your arrival to meet you at the curb.

REGISTRAR OF VOTERS  
2724 GATEWAY DRIVE  
RIVERSIDE, CA 92507-0918



NONPROFIT  
U.S. POSTAGE  
**PAID**  
Registrar of Voters  
Riverside

**REQUEST TRANSLATED ELECTION MATERIAL**  
VOTER INFORMATION:

NAME AS REGISTERED \_\_\_\_\_

RESIDENCE ADDRESS AS REGISTERED \_\_\_\_\_

CITY STATE ZIP

**MAIL MATERIALS TO:**  
\_\_\_\_\_  
ADDRESS (IF DIFFERENT)  
\_\_\_\_\_  
CITY STATE ZIP

I declare, under penalty of perjury, that the information provided is true and correct to the best of my knowledge.

**SIGNATURE REQUIRED** \_\_\_\_\_  
SIGNATURE OF VOTER DATE

33-BCov 4-12-2022

Translated election materials are available for select precincts. If you would like to receive materials in another language, complete and return this postcard to the Registrar of Voters office. Translated materials will also be available at the Registrar of Voters office and at all polling places.

I wish to receive election materials in:  
 Español-Spanish

I wish to receive translated reference ballots in: (select one only)  
 한국어 - Korean       Tiếng Việt - Vietnamese  
 Tagalog - Tagalog       中文 - Chinese

↓ POSTMASTER DELIVER TO ↓

**OPT-IN TO VIEW YOUR  
COUNTY VOTER INFORMATION  
GUIDE ONLINE!**

You can view all future  
County Voter Information Guides  
online with 24/7 access at your  
convenience.

It's easy and great for the  
environment.

Please visit our website at [www.voteinfo.net](http://www.voteinfo.net)  
or call (951) 486-7200 or (800) 773-VOTE (8683)

**BALLOT  
TYPE**

**VOTE EARLY**  
IT'S QUICK  
IT'S EASY  
IT'S CONVENIENT  
**GET OUT OF LINE ON ELECTION DAY!**  
**VOTE-BY-MAIL**

↓ LOCATION OF YOUR POLLING PLACE ↓

