

County of Riverside



Registrar of Voters

Polling Place Location
on Back Cover
Polls Open
March 3, 2020
7:00 a.m. to 8:00 p.m.

.....
Registration Deadline
To Vote or Change
Political Party
Preference
February 17, 2020

Additional Information Inside
.....

Quick • Easy • Convenient
Vote-By-Mail
February 3rd - February 25th
Application on Back Cover

AVISO IMPORTANTE
Una traducción en Español de esta Guía de Información del Condado Para el Votante puede obtenerse en la oficina del Registro de Votantes llamando al (951) 486- 7200 o (800) 773-VOTE (8683) o visite nuestro sitio web www.voteinfo.net

Consolidated Presidential Primary Election

Tuesday, March 3, 2020
County Voter Information Guide

This booklet contains all political party preferences, please check the back cover for your party preference.



COUNTY OF RIVERSIDE REGISTRAR OF VOTERS
2720 Gateway Drive, Riverside, CA 92507-0918 • (951) 486-7200 • (800) 773-VOTE (8683) • TTY (951) 697-8966
Mailing Address: 2724 Gateway Drive, Riverside, CA 92507-0918
www.voteinfo.net

Election **REMINDER**

Elections in California

There are two different types of primary elections in California. The results of the primary election determine the candidates who will run in the general election in November. The types of primary elections are:

Presidential (Party-Nominated/Partisan Office)

- Office on the ballot: U.S. President
- Who can vote: Only voters who registered with the same political party as the candidate (the Democratic, American Independent, and Libertarian parties allow voters who registered with no party preference to vote in their primary).
- Result: The candidate who moves on to the general election is the candidate nominated by their national political party and may not be the candidate that was elected by popular vote in the California primary election.

California Open Primary (Voter-Nominated Offices)

- Offices on the ballot: U.S. Senate, U.S. House of Representatives, statewide offices, and state legislative offices
- Who can vote: Any voter may vote for any one candidate in each contest, regardless of party preference.
- Result: The top-two candidates, regardless of party preference, who receive the most votes in each primary contest move on to the general election. After a top-two primary, a general election must be held even if one candidate receives a majority of the vote (at least 50 percent +1) and even if there is only one candidate in the primary election.

California's open primary system does not apply to candidates running for U.S. President, County Central Committee, or local offices. Non-partisan offices (such as judges, county supervisors, city council members, and school board members) remain open to all eligible voters.

Get out of line on Election Day!



VOTE-BY-MAIL

Quick, easy, convenient...
from the comfort of your home!
See application on back cover

VOTE EARLY

Riverside County
Registrar of Voters Office
See inside for additional locations and information

REBECCA SPENCER
Registrar of Voters



ART TINOCO
Assistant Registrar of Voters

REGISTRAR OF VOTERS
COUNTY OF RIVERSIDE

Dear Voter:

March 3, 2020 is Election Day. This County Voter Information Guide provides ballot marking instructions, polling place location, candidate information, and other important election details that you should review before you vote. You may mark your selections on your Sample Ballot and take it with you to the polls for easy reference.

You have several options for voting:

Vote-by-Mail – Voting by mail is convenient and easy. You will find an application to receive a Vote-by-Mail ballot on the back cover of this pamphlet. The deadline to request a Vote-by-Mail ballot is February 25. You have several options for returning your ballot:

- Mail your ballot in time to reach the Registrar of Voters Office by 8:00 p.m. on Election Day, or be postmarked on or before Election Day and received no later than three days after Election Day to be counted.
- Return your ballot in person to the Registrar of Voters Office during regular business hours and until close of polls on Election Day. For your convenience the Registrar's office has a secure locked drop box at its entry for ballot drop off 24 hours a day.
- Deposit your ballot in one of the secure drop-off boxes available at designated City Clerks' Offices from February 3 through March 2. Please visit our website to view a map of ballot drop-off locations.
- Take your ballot to any polling place, vote center, or ballot drop-off location within the state no later than the close of the polls on Election Day.
- You may confirm that the Registrar of Voters Office has received your returned Vote-by-Mail ballot on our website at www.voteinfo.net.
- **Vote First, Count First!** Vote-by-Mail ballots received before Election Day are counted first. Return your ballot as soon as possible to ensure that it is included in the first Election Night results!

Early Voting – Vote at the Registrar of Voters Office beginning February 3 - March 2 (excluding Holidays), Monday through Friday, 8:00 a.m. to 5:00 p.m.; Saturday, February 22 and February 29, 9:00 a.m. to 4:00 p.m.; and Election Day, March 3, 7:00 a.m. to 8:00 p.m. Please visit our website at www.voteinfo.net for additional early voting locations and information.

Vote on Election Day March 3 – See the back cover of this Voter Information Guide for your Polling Place location.

Please note that the registration deadline to vote or change your political party preference is February 17, 2020. Since this deadline falls on a State Holiday it is extended to the next business day.

Have you considered participating in the Electoral process? We need you to volunteer to work the polls on Election Day! We are eager to train you to assist voters with their fundamental right to vote. Please contact us for more information.

The Registrar of Voters team is here to serve you. Please contact us anytime, so we can help make your voting experience a positive one. Thank you for participating in this election – your vote counts!

Sincerely,

REBECCA SPENCER
Registrar of Voters



Be sure to follow the Registrar of Voters on
Facebook, YouTube and Twitter.

Elections in California

The Top Two Candidates Open Primary Act requires that all candidates for a voter-nominated office be listed on the same ballot. Previously known as partisan offices, voter-nominated offices include state legislative offices, U.S. congressional offices, and state constitutional offices.

In both the open primary and general elections, you can vote for any candidate regardless of what party preference you indicated on your voter registration form. In the primary election, the two candidates receiving the most votes—regardless of party preference—move on to the general election. If a candidate receives a majority of the vote (at least 50 percent +1), a general election still must be held.

California's open primary system does not apply to candidates running for U.S. President, county central committee, or local offices.

Write-in candidates for voter-nominated offices can still run in the primary election. However, a write-in candidate can only move on to the general election if the candidate is one of the top two vote-getters in the primary election. Additionally, there is no independent nomination process for a general election.

Superintendent of Public Instruction is a nonpartisan office. If a candidate for Superintendent of Public Instruction were to receive a majority of the vote (at least 50 percent +1) at the primary election, then that candidate would be elected, and no general election would be held. Additional information on nonpartisan offices can be found below.

California law requires the following information to be printed in this guide.

Party-Nominated/Partisan Offices

Political parties may formally nominate candidates for party-nominated/partisan offices at the primary election. A nominated candidate will represent that party as its official candidate for the specific office at the general election and the ballot will reflect an official designation. The top vote-getter for each party at the primary election moves on to the general election. Parties also elect officers of county central committees at the primary election.

A voter can only vote in the primary election of the political party he or she has disclosed a preference for upon registering to vote. However, a political party may allow a person who has declined to disclose a party preference to vote in that party's primary election.

Voter-Nominated Offices

Political parties are not entitled to formally nominate candidates for voter-nominated offices at the primary election. A candidate nominated for a voter-nominated office at the primary election is the nominee of the people and not the official nominee of any party at the general election. A candidate for nomination to a voter-nominated office shall have his or her qualified party preference, or lack of qualified party preference, stated on the ballot, but the party preference designation is selected solely by the candidate and is shown for the information of the voters only. It does not mean the candidate is nominated or endorsed by the party designated, or that there is an affiliation between the party and candidate, and no candidate nominated by the voters shall be deemed to be the officially nominated candidate of any political party. In the county Voter Information Guide, parties may list the candidates for voter-nominated offices who have received the party's official endorsement.

Any voter may vote for any candidate for a voter-nominated office, if they meet the other qualifications required to vote for that office. The top two vote-getters at the primary election move on to the general election for the voter-nominated office even if both candidates have specified the same party preference designation. No party is entitled to have a candidate with its party preference designation move on to the general election, unless the candidate is one of the two highest vote-getters at the primary election.

Nonpartisan Offices

Political parties are not entitled to nominate candidates for nonpartisan offices at the primary election, and a candidate at the primary election is not the official nominee of any party for the specific office at the general election. A candidate for nomination to a nonpartisan office may not designate his or her party preference, or lack of party preference, on the ballot. The top two vote-getters at the primary election move on to the general election for the nonpartisan office.

HOW TO USE THIS SAMPLE BALLOT

- POLITICAL PARTY PREFERENCE:** If you are not sure about your political party preference, look at the front of this booklet or at the address label on the back cover. You may also check your political party preference on our website at www.voteinfo.net or by calling (951) 486-7200. If you chose a political party preference when registering to vote you will be issued an official ballot which will include that political party's U.S. Presidential and central committee candidates. Voter-Nominated and Nonpartisan contests will also be included.
- NO PARTY PREFERENCE AND NONPARTISAN:** If you did not indicate a political party preference or you registered with an unqualified political party, then you will be issued the **No Party Preference / Nonpartisan** ballot. Your ballot will include congressional, state legislative, and nonpartisan contests, **not U.S. Presidential Candidates**. However, for this election, three parties are allowing cross over voting for their Presidential Candidates. You may request one of the following ballots:

American Independent Party

Democratic Party

Libertarian Party

3. PARTISAN OFFICES IN THE SAMPLE BALLOT

Look at the sample ballot pages that follow. Find the sample ballot pages for the appropriate political party, in order to review your official ballot choices for partisan offices. If you are a no party preference voter and you choose to vote the nonpartisan ballot, you will not find any of the presidential candidates on your ballot.

4. VOTER-NOMINATED AND NONPARTISAN SAMPLE BALLOT PAGES

All voters are eligible to vote on the voter-nominated and nonpartisan portion of the ballot. Following the party sample ballot pages are the voter-nominated and nonpartisan offices, and state and local propositions and measures. The exact issues and offices on your ballot correspond to the location of your residence address, according to what jurisdictions have seats to fill and/or questions to ask.

HOW TO MARK YOUR PAPER BALLOT

Please refer to the following instructions on how to properly complete your Official Ballot:

- Completely fill in the oval next to your choice, like the example provided. Check both front and back of ballot for voting contests.
- Use a black ink pen or marker. Do not use red ink.
- Completely filling in the oval is preferred.
- Vote for no more than the number of votes allowed in each contest (e.g., vote for one, vote for no more than two, etc.).
- Please keep the ballot folded the same way as you received it.

**TO MARK YOUR VOTE
FILL IN THE OVAL**



VOTE!!!

For a demonstration on marking your ballot, please visit our website at www.voteinfo.net

SAMPLE BALLOT / BOLETA DE MUESTRA

CONSOLIDATED PRESIDENTIAL PRIMARY ELECTION / ELECCIÓN PRIMARIA PRESIDENCIAL CONSOLIDADA

March 3, 2020 / 3 de marzo de 2020

Mark your choices on your Sample Ballot, then refer to it when you vote / Marque sus opciones en su Boleta de Muestra, luego refiérase a esta cuando esté votando

DEMOCRATIC PARTY / PARTIDO DEMÓCRATA

No Party Preference / Nonpartisan Voters may request a DEMOCRATIC PARTY Ballot. Please note you will not be allowed to vote for Members of their Central Committee.

Los Votantes Sin Preferencia de Partido / No Partidistas pueden solicitar una Boleta para el PARTIDO DEMÓCRATA.

Por favor tome en cuenta que usted no podrá votar por los Miembros de su Comité Central.

FIND YOUR PARTY
on this page or the following pages
ENCUENTRE SU PARTIDO
en esta página o en las siguientes páginas

PARTY-NOMINATED OFFICES CARGOS NOMINADOS POR LOS PARTIDOS PRESIDENT OF THE UNITED STATES PRESIDENTE DE LOS ESTADOS UNIDOS
Presidential Preference Preferencia Presidencial
Vote for One / Vote por Uno
<input type="radio"/> JOHN K. DELANEY
<input type="radio"/> AMY KLOBUCHAR
<input type="radio"/> BERNIE SANDERS
<input type="radio"/> JOE SESTAK
<input type="radio"/> TOM STEYER
<input type="radio"/> DEVAL PATRICK
<input type="radio"/> MICHAEL BENNET
<input type="radio"/> MICHAEL R. BLOOMBERG
<input type="radio"/> MOSIE BOYD
<input type="radio"/> CORY BOOKER
<input type="radio"/> PETE BUTTIGIEG
<input type="radio"/> JOSEPH R. BIDEN
<input type="radio"/> TULSI GABBARD
<input type="radio"/> MARK STEWART GREENSTEIN
<input type="radio"/> JULIÁN CASTRO
<input type="radio"/> MICHAEL A. ELLINGER
<input type="radio"/> ELIZABETH WARREN
<input type="radio"/> MARIANNE WILLIAMSON
<input type="radio"/> ANDREW YANG
<input type="radio"/> ROQUE "ROCKY" DE LA FUENTE III
<input type="radio"/>



SAMPLE BALLOT / BOLETA DE MUESTRA

CONSOLIDATED PRESIDENTIAL PRIMARY ELECTION / ELECCIÓN PRIMARIA PRESIDENCIAL CONSOLIDADA

March 3, 2020 / 3 de marzo de 2020

Mark your choices on your Sample Ballot, then refer to it when you vote / Marque sus opciones en su Boleta de Muestra, luego refiérase a esta cuando esté votando

REPUBLICAN PARTY / PARTIDO REPUBLICANO

FIND YOUR PARTY
on this page or the following pages
ENCUENTRE SU PARTIDO
en esta página o en las siguientes páginas

PARTY-NOMINATED OFFICES CARGOS NOMINADOS POR LOS PARTIDOS PRESIDENT OF THE UNITED STATES PRESIDENTE DE LOS ESTADOS UNIDOS
Presidential Preference Preferencia Presidencial
Vote for One / Vote por Uno
<input type="radio"/> ROQUE "ROCKY" DE LA FUENTE
<input type="radio"/> MATTHEW JOHN MATERN
<input type="radio"/> ZOLTAN G. ISTVAN
<input type="radio"/> DONALD J. TRUMP
<input type="radio"/> ROBERT ARDINI
<input type="radio"/> JOE WALSH
<input type="radio"/> BILL WELD
<input type="radio"/>



SAMPLE BALLOT / BOLETA DE MUESTRA

CONSOLIDATED PRESIDENTIAL PRIMARY ELECTION / ELECCIÓN PRIMARIA PRESIDENCIAL CONSOLIDADA

March 3, 2020 / 3 de marzo de 2020

Mark your choices on your Sample Ballot, then refer to it when you vote / Marque sus opciones en su Boleta de Muestra, luego refiérase a esta cuando esté votando

AMERICAN INDEPENDENT PARTY / PARTIDO AMERICANO INDEPENDIENTE

No Party Preference / Nonpartisan Voters may request an
AMERICAN INDEPENDENT PARTY Ballot.

Los Votantes Sin Preferencia de Partido / No Partidistas pueden solicitar una Boleta
para el PARTIDO AMERICANO INDEPENDIENTE.

FIND YOUR PARTY
on this page or the following pages
ENCUENTRE SU PARTIDO
en esta página o en las siguientes páginas

PARTY-NOMINATED OFFICES
CARGOS NOMINADOS POR LOS PARTIDOS
PRESIDENT OF THE UNITED STATES
PRESIDENTE DE LOS ESTADOS UNIDOS

Presidential Preference
Preferencia Presidencial

Vote for One / Vote por Uno

ROQUE "ROCKY" DE LA FUENTE

CHARLES KRAUT

J.R. MYERS

DON BLANKENSHIP

PHIL COLLINS



SAMPLE BALLOT / BOLETA DE MUESTRA

CONSOLIDATED PRESIDENTIAL PRIMARY ELECTION / ELECCIÓN PRIMARIA PRESIDENCIAL CONSOLIDADA

March 3, 2020 / 3 de marzo de 2020

Mark your choices on your Sample Ballot, then refer to it when you vote / Marque sus opciones en su Boleta de Muestra, luego refiérase a esta cuando esté votando

GREEN PARTY / PARTIDO VERDE

FIND YOUR PARTY
on this page or the following pages
ENCUENTRE SU PARTIDO
en esta página o en las siguientes páginas

**PARTY-NOMINATED OFFICES
CARGOS NOMINADOS POR LOS PARTIDOS
PRESIDENT OF THE UNITED STATES
PRESIDENTE DE LOS ESTADOS UNIDOS**

**Presidential Candidate Preference
Preferencia de Candidato a Presidente**

Vote for a Candidate / Vote por un Candidato

Delegates to the national convention will be selected after the presidential preference primary election.

Los delegados a la convención nacional serán seleccionados después de la elección primaria de preferencia presidencial.

- HOWIE HAWKINS
- DARIO HUNTER
- DENNIS LAMBERT
- SEDINAM MOYOWASIFZA-CURRY
- DAVID ROLDE
-



SAMPLE BALLOT / BOLETA DE MUESTRA

CONSOLIDATED PRESIDENTIAL PRIMARY ELECTION / ELECCIÓN PRIMARIA PRESIDENCIAL CONSOLIDADA

March 3, 2020 / 3 de marzo de 2020

Mark your choices on your Sample Ballot, then refer to it when you vote / Marque sus opciones en su Boleta de Muestra, luego refiérase a esta cuando esté votando

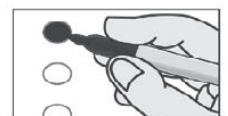
LIBERTARIAN PARTY / PARTIDO LIBERTARIO

No Party Preference / Nonpartisan Voters may request a LIBERTARIAN PARTY Ballot.

Los Votantes Sin Preferencia de Partido / No Partidistas pueden solicitar una Boleta para el PARTIDO LIBERTARIO.

FIND YOUR PARTY
on this page or the following pages
ENCUENTRE SU PARTIDO
en esta página o en las siguientes páginas

PARTY-NOMINATED OFFICES CARGOS NOMINADOS POR LOS PARTIDOS PRESIDENT OF THE UNITED STATES PRESIDENTE DE LOS ESTADOS UNIDOS
Presidential Preference Preferencia Presidencial
Vote for One / Vote por Uno
<input type="radio"/> MAX ABRAMSON
<input type="radio"/> SAM ROBB
<input type="radio"/> KIM RUFF
<input type="radio"/> STEVEN A RICHEY
<input type="radio"/> JACOB HORNBERGER
<input type="radio"/> SOURAYA FAAS
<input type="radio"/> KEENAN WALLACE DUNHAM
<input type="radio"/> ADAM KOKESH
<input type="radio"/> VERMIN SUPREME
<input type="radio"/> JO JORGENSEN
<input type="radio"/> DAN BEHRMAN
<input type="radio"/> ERIK CHASE GERHARDT
<input type="radio"/> KEN ARMSTRONG
<input type="radio"/>



SAMPLE BALLOT / BOLETA DE MUESTRA

CONSOLIDATED PRESIDENTIAL PRIMARY ELECTION / ELECCIÓN PRIMARIA PRESIDENCIAL CONSOLIDADA

March 3, 2020 / 3 de marzo de 2020

Mark your choices on your Sample Ballot, then refer to it when you vote / Marque sus opciones en su Boleta de Muestra, luego refiérase a esta cuando esté votando

PEACE AND FREEDOM PARTY / PARTIDO PAZ Y LIBERTAD

FIND YOUR PARTY
on this page or the following pages
ENCUENTRE SU PARTIDO
en esta página o en las siguientes páginas

PARTY-NOMINATED OFFICES
CARGOS NOMINADOS POR LOS PARTIDOS
PRESIDENT OF THE UNITED STATES
PRESIDENTE DE LOS ESTADOS UNIDOS

Presidential Preference
Preferencia Presidencial

Vote for One / Vote por Uno

HOWIE HAWKINS

GLORIA LA RIVA



SAMPLE BALLOT / BOLETA DE MUESTRA

CONSOLIDATED PRESIDENTIAL PRIMARY ELECTION / ELECCIÓN PRIMARIA PRESIDENCIAL CONSOLIDADA

March 3, 2020 / 3 de marzo de 2020

Mark your choices on your Sample Ballot, then refer to it when you vote / Marque sus opciones en su Boleta de Muestra, luego refiérase a esta cuando esté votando

VOTER-NOMINATED AND NONPARTISAN OFFICES / CARGOS NOMINADOS POR LOS VOTANTES Y NO PARTIDISTAS

All voters, regardless of party preference, may vote for any candidate for a voter-nominated or nonpartisan office.

Todo los votantes, sin importar la preferencia de partido, pueden votar por cualquier candidato a un cargo nominado por los votantes o no partidistas.

VOTER-NOMINATED OFFICES CARGOS NOMINADOS POR LOS VOTANTES
UNITED STATES REPRESENTATIVE REPRESENTANTE DE ESTADOS UNIDOS
42nd Congressional District Distrito Congresional Núm. 42
Vote for One / Vote por Uno
<input type="radio"/> KEN CALVERT Party Preference: Republican Preferencia de Partido: Republicano U.S. Representative Representante de EE. UU.
<input type="radio"/> WILLIAM "LIAM" O'MARA Party Preference: Democratic Preferencia de Partido: Demócrata University Professor / Historian Profesor universitario / Historiador
<input type="radio"/> REGINA MARSTON Party Preference: Democratic Preferencia de Partido: Demócrata Entrepreneur / Small Businesswoman Empresaria / Pequeña empresaria
<input type="radio"/>
STATE SENATOR / SENADOR ESTATAL
23rd Senatorial District Distrito Senatorial Núm. 23
Vote for One / Vote por Uno
<input type="radio"/> LLOYD WHITE Party Preference: Republican Preferencia de Partido: Republicano Councilmember / Business Analyst Miembro del concejo / Analista de negocios
<input type="radio"/> KRIS GOODFELLOW Party Preference: Democratic Preferencia de Partido: Demócrata Technology Executive Ejecutiva de tecnología
<input type="radio"/> CRISTINA PURACI Party Preference: Republican Preferencia de Partido: Republicano Teacher / Union President Maestra / Presidenta de sindicato
<input type="radio"/> ROSILICIE OCHOA BOGH Party Preference: Republican Preferencia de Partido: Republicano Businesswoman / School Boardmember Mujer de negocios / Miembro de la junta escolar
<input type="radio"/> ABIGAIL MEDINA Party Preference: Democratic Preferencia de Partido: Demócrata School Board President Presidenta de la junta escolar
<input type="radio"/>

VOTER-NOMINATED OFFICES CARGOS NOMINADOS POR LOS VOTANTES
MEMBER OF THE STATE ASSEMBLY MIEMBRO DE LA ASAMBLEA ESTATAL
67th Assembly District Distrito de la Asamblea Núm. 67
Vote for One / Vote por Uno
<input type="radio"/> JERRY CARLOS Party Preference: Democratic Preferencia de Partido: Demócrata Commissioner / Business Owner Comisionado / Proprietario de negocio
<input type="radio"/> KELLY SEYARTO Party Preference: Republican Preferencia de Partido: Republicano Mayor, City of Murrieta Alcalde, ciudad de Murrieta
<input type="radio"/> JEREMY SMITH Party Preference: Republican Preferencia de Partido: Republicano Business Owner / Councilmember Proprietario de negocio / Miembro del concejo
<input type="radio"/> STEVE MANOS Party Preference: Republican Preferencia de Partido: Republicano Lake Elsinore Mayor / Businessman Alcalde de Lake Elsinore / Hombre de negocios
<input type="radio"/> NICK PARDUE Party Preference: Republican Preferencia de Partido: Republicano Educator Educador
<input type="radio"/>



SAMPLE BALLOT / BOLETA DE MUESTRA

CONSOLIDATED PRESIDENTIAL PRIMARY ELECTION / ELECCIÓN PRIMARIA PRESIDENCIAL CONSOLIDADA

March 3, 2020 / 3 de marzo de 2020

Mark your choices on your Sample Ballot, then refer to it when you vote / Marque sus opciones en su Boleta de Muestra, luego refiérase a esta cuando esté votando

VOTER-NOMINATED AND NONPARTISAN OFFICES / CARGOS NOMINADOS POR LOS VOTANTES Y NO PARTIDISTAS

All voters, regardless of party preference, may vote for any candidate for a voter-nominated or nonpartisan office.

Todo los votantes, sin importar la preferencia de partido, pueden votar por cualquier candidato a un cargo nominado por los votantes o no partidistas.

NONPARTISAN OFFICES CARGOS NO PARTIDARIOS
COUNTY / CONDADO
<p>County Supervisor, District 3 Supervisor del Condado, Distrito 3</p> <p>Vote for One / Vote por Uno</p>
<p><input type="radio"/> CHUCK WASHINGTON Riverside County Supervisor Supervisor del Condado de Riverside</p>
<p><input type="radio"/> JOE SCARAFONE Small Business Owner Propietario de Pequeña Empresa</p>
<p><input type="radio"/> COURTNEY SHEEHAN Marine / Graduate Student Marina / Estudiante Graduada</p>
<p><input type="radio"/> MIKE JUÁREZ Retired Peace Officer Oficial del Orden Público Jubilado</p>
<p><input type="radio"/> EDISON GOMEZ-KRAUSS ESL Teacher Maestro de ESL</p>
<p><input type="radio"/></p>

MEASURE(S) SUBMITTED TO THE VOTERS MEDIDA(S) SOMETIDAS A LOS VOTANTES
STATE / ESTADO
<p>13 AUTHORIZES BONDS FOR FACILITY REPAIR, CONSTRUCTION, AND MODERNIZATION AT PUBLIC PRESCHOOLS, K-12 SCHOOLS, COMMUNITY COLLEGES, AND UNIVERSITIES. LEGISLATIVE STATUTE. Authorizes \$15 billion in state general obligation bonds for construction and modernization of public education facilities. Fiscal Impact: Increased state costs to repay bonds estimated at about \$740 million per year (including interest) over the next 35 years.</p> <p>AUTORIZA BONOS PARA LA REPARACIÓN, CONSTRUCCIÓN Y MODERNIZACIÓN DE LAS INSTALACIONES DE LAS ESCUELAS PÚBLICAS DE EDUCACIÓN PREESCOLAR, ESCUELAS DE NIVELES K-12, COLEGIOS COMUNITARIOS Y UNIVERSIDADES. ESTATUTO LEGISLATIVO. Autoriza \$15 mil millones en bonos de obligación general del estado para la construcción y modernización de instalaciones de educación pública. Impacto fiscal: Se calcula que el aumento de los costos del estado para pagar los bonos es de alrededor de \$740 millones por año (incluidos los intereses) durante los próximos 35 años.</p>
<p><input type="radio"/> YES / SÍ</p>
<p><input type="radio"/> NO / NO</p>



VOTER'S INFORMATION GUIDE SECTION

The following pages contain voter information applicable to your ballot which may include the following items:

- CANDIDATE STATEMENTS
- BALLOT MEASURES
- ANALYSES
- ARGUMENTS IN SUPPORT & IN OPPOSITION

This guide section may not contain a complete list of candidates. A complete list of candidates appears on the Sample Ballot section of this guide. Each candidate's statement in this guide is volunteered by the candidate and is printed at the expense of the candidate unless otherwise determined by the governing body. Deposit amounts required for publication of candidate statements are listed in the candidate handbook at www.voteinfo.net. Additional candidate statements may be available and viewed at www.voteinfo.net.

Statements made on the following pages represent the views of the authors and are not endorsed by the County of Riverside. Internet website addresses included in any statements are provided by the authors. The County of Riverside assumes no liability for the accuracy or content of websites listed therein.

Arguments in support of or in opposition to the ballot measures are opinions of the authors.

The text, grammar, and spelling are as submitted by the authors.

Campaign Finance Reform

Among all state legislative candidates appearing on ballots in Riverside County, the following persons have pledged to abide by campaign spending limits as specified in the California Government Code. Candidates agreeing to the limits have the opportunity to publish a statement of qualifications in the local County Voter Information Guide. Not all districts will appear on your ballot.

STATE SENATE, 23rd DISTRICT

Lloyd White, Republican
Cristina Puraci, Republican
Rosilicie Ochoa Bogh, Republican

STATE SENATE, 28th DISTRICT

Melissa Melendez, Republican
John Schwab, Republican
Joy Silver, Democratic
Elizabeth Romero, Democratic

STATE ASSEMBLY, 42nd DISTRICT

DeniAntionette Mazingo, Democratic
Chad Mayes, No Party Preference

STATE ASSEMBLY, 56th DISTRICT

Eduardo Garcia, Democratic
America Figueroa, Republican

STATE ASSEMBLY, 60th DISTRICT

Chris Raahauge, Republican
Sabrina Cervantes, Democratic

STATE ASSEMBLY, 61st DISTRICT

Ali Mazarei, Republican
Jose Medina, Democratic

STATE ASSEMBLY, 67th DISTRICT

Jerry Carlos, Democratic
Kelly Seyarto, Republican
Jeremy Smith, Republican
Steve Manos, Republican
Nick Pardue, Republican

STATE ASSEMBLY, 71st DISTRICT

Randy Voepel, Republican
Liz "Elizabeth" Lavertu, Democratic

STATE ASSEMBLY, 75th DISTRICT

Marie Waldron, Republican
Roger Garcia, Democratic
Karen "Kate" Schwartz, Democratic

Party Endorsements – Elections Code § 13302(b)

The County Elections Official shall print a list of all candidates for Voter-Nominated Offices that are endorsed by the following qualified political parties:

AMERICAN INDEPENDENT PARTY

Erin Cruz, United States Representative, 36th District
Ken Calvert, United States Representative, 42nd District
Brian W. Jones, United States Representative, 50th District

DEMOCRATIC PARTY

Raul Ruiz, United States Representative, 36th District
Mark Takano, United States Representative, 41st District
William "Liam" O'Mara, United States Representative, 42nd District
Ammar Campa-Najjar, United States Representative, 50th District
Kris Goodfellow, State Senator, 23rd District
Joy Silver, State Senator, 28th District
Richard D. Roth, State Senator, 31st District
DeniAntionette Mazingo, Member of the State Assembly, 42nd District
Eduardo Garcia, Member of the State Assembly, 56th District
Sabrina Cervantes, Member of the State Assembly, 60th District
Jose Medina, Member of the State Assembly, 61st District
Liz "Elizabeth" Lavertu, Member of the State Assembly, 71st District
Karen "Kate" Schwartz, Member of the State Assembly, 75th District

PEACE & FREEDOM PARTY

Jose Cortes, United States Representative, 50th District

REPUBLICAN PARTY

Aja Smith, United States Representative, 41st District
Ken Calvert, United States Representative, 42nd District
Rosilicie Ochoa Bogh, State Senator, 23rd District
Melissa Melendez, State Senator, 28th District
Andrew F. Kotyuk, Member of the State Assembly, 42nd District
Chris Raahauge, Member of the State Assembly, 60th District
Ali Mazarei, Member of the State Assembly, 61st District
Randy Voepel, Member of the State Assembly, 71st District
Marie Waldron, Member of the State Assembly, 75th District

**CANDIDATE STATEMENT FOR
UNITED STATES REPRESENTATIVE,
42ND CONGRESSIONAL DISTRICT**

KEN CALVERT, Republican

AGE: 66

OCCUPATION: U.S. Representative

EDUCATION AND QUALIFICATIONS:

As a lifelong Inland Empire resident, it is my honor and privilege to represent you in the United States House of Representatives.

My focus is on the issues most important to our community. I am committed to improving our roads so commuters can spend more time with their families. Recently, I worked with local officials to secure a \$50 million federal grant to reduce congestion on our local freeways.

I am concerned by the explosion of homelessness resulting from Democrat policies that essentially legalized drug use and petty theft, making it tougher for communities to address the crisis.

I have delivered essential resources to fight our state's wildfires, create a life-saving earthquake early warning technology, and improve our air quality.

Spurred by lower federal taxes and reduced regulations, our economy has delivered record low unemployment and higher wages. I oppose efforts by Democrats to raise taxes on families to pay for a massive government expansion, including their scheme to force you into government run healthcare.

We must be a nation that enforces the rules of law. I support construction of the border wall and making E-Verify mandatory.

As the top Republican on the Defense Appropriations Subcommittee, I proudly support pay raises for our troops as well as the vital missions at our Navy base in Norco and March Air Reserve Base. We must ensure our military remains the strongest in the world.

I am eager to continue working for you and your family. I humbly ask for your vote.

Ken Calvert
CalvertForCongress.com

**CONTINUED
ON NEXT
PAGE**

**CANDIDATE STATEMENT FOR
UNITED STATES REPRESENTATIVE,
42ND CONGRESSIONAL DISTRICT**

WILLIAM "LIAM" O'MARA, Democratic
OCCUPATION: University Professor / Historian
EDUCATION AND QUALIFICATIONS:

AGE: 45

I'm Liam O'Mara, a former longshoreman and frycook, and currently a professor of history. I do not come from a privileged background, and understand the struggles we face in the Inland Empire.

Wages have been stagnant for decades, the price of housing and of healthcare have skyrocketed, and jobs are being automated away. I am running for Congress because, as a historian, I know how we got here, and what we can do about it.

Expanding roads and freeways can help with traffic, but not solve it -- for that we must develop our local economy. In Congress I will work to help small businesses, to attract new investments, and to get a public university in district to reduce commuter traffic and make more affordable the training we need for the jobs of tomorrow.

We deserve better jobs now, as well, not more warehousing work that will soon be lost to robots. Half the Inland Empire earn less than a living wage, and in Congress I will fight to expand opportunities so that our children have a better future.

We can lower the cost of living and keep more of what we earn, and ensure everyone has adequate healthcare, a good education, and a place to live. We do that by addressing corruption in Washington, and ending policies that have seen the bottom 50% lose a trillion in wealth.

It's time we had a Congressperson to represent all of us, not just a few. I humbly ask for your vote.

William "Liam" O'Mara
www.liamomara.org
facebook.com/liamomaraiv

**CANDIDATE STATEMENT FOR
UNITED STATES REPRESENTATIVE,
42ND CONGRESSIONAL DISTRICT**

REGINA MARSTON, Democratic
OCCUPATION: President
EDUCATION AND QUALIFICATIONS:

AGE: 59

I earned a Bachelor of Science degree in communications from the University of Florida. Over the last 30 years, I have held senior level management roles in health insurance, homebuilding, development & infrastructure, utilities, and clean energy in California, and nationwide. I'm an entrepreneur who has developed solutions to many issues that impact District 42.

My experience taught me valuable negotiating, communication, stakeholder engagement, regulatory, and policymaking skills that I will use in Congress. I understand the importance of having a representative who will work for the "people" when interacting with local, state, and federal government. Many times, government is focused on developing a strong tax base for maintaining the "status quo" and not for the benefit of the community. As the endorsed AFL-CIO candidate, I will be a champion for the people, not the powerful.

CA 42 is the growth center for the next 20+ years. This will mean increased traffic, additional strain on our energy and water infrastructure, a negative impact on our air quality, increased demand on our school districts, and police/fire resources. My vision is to protect the constituents and work with our local, state, and federal governments to create solutions for sustainable growth that don't raise taxes beyond the ability of our residents to pay.

To ensure our region has the resources needed to meet the challenges ahead, we need a leader who has the experience to hit the ground running on day one. Put me to work for you in CA 42. Thank you.

**CANDIDATE STATEMENT FOR
STATE SENATOR,
23RD SENATORIAL DISTRICT**

LLOYD WHITE, Republican

AGE: 58

OCCUPATION: Councilman / Business Analyst

EDUCATION AND QUALIFICATIONS:

California is headed in the wrong direction and the problem starts in Sacramento. The Legislature spends its time passing crazy laws like plastic straw bans, while real problems like high taxes, traffic congestion, homelessness and underperforming schools go unaddressed.

I am proud to be the locally endorsed candidate for State Senate – the candidate Sacramento fears most. With your vote, I will fight to reverse the liberal, high tax policies that have made California too expensive for working families, seniors and business.

I offer a proven track record as a Citizen Tax Fighter who took on City Hall, rooted out corruption, reformed spending and lowered property taxes. I'll bring this same dedication and focused leadership to the State Capitol as our next Senator.

My experience as a Councilman and Business Analyst will help me attack the broken system in Sacramento, where special interests and political insiders cut budget-busting backroom deals to enrich themselves at our expense.

As the first to take the No New Tax Pledge, I believe Inland Empire families already pay too much. I'll fight to protect Prop. 13 and stop property tax hikes. I'll fight to lower the fees and regulations that make building homes in California so expensive.

My local endorsements include: Conservative Riverside County Former Senator Jeff Stone and more than 20 City Councilmembers and elected officials from our district.

I'd be honored to receive your vote and fight for you in Sacramento.

Visit www.VotelloydWhite.com to learn more. Thank you.

**CANDIDATE STATEMENT FOR
STATE SENATOR,
23RD SENATORIAL DISTRICT**

ROSILICIE OCHOA BOGH, Republican

OCCUPATION: Businesswoman / School Boardmember

EDUCATION AND QUALIFICATIONS:

I have lived in the Inland Empire for 29 years since moving here while in high school. In that time, I have raised a family with my husband of 23 years, built a business, and been given the opportunity to serve our community.

I have served on the Yucaipa-Calimesa School Board helping our children receive the education they need to succeed. My time on school board has shown me the passion I have for representing the needs of my neighbors and opened my eyes to the larger questions facing the Inland Empire.

As your State Senator, my driving motivation will be representing and supporting the interests and needs of Senate District 23's constituents. Our communities here in the Inland Empire have provided the opportunity of so many families like my own to attain the American dream of good jobs, home ownership and building strong families.

This remains true today but the increasing affordability and homelessness crises across the state are threatening to make it impossible for families to reach these dreams. Governor Newsom and legislators in Sacramento have ensured that reasonable solutions to these problems are not enacted and they will continue making it harder for Californians to succeed if significant changes are not made.

I am the best candidate to act as a coalition builder in Sacramento and enact solutions to these and other problems facing the constituents of district 23 and all Californians.

I am proudly endorsed by State Senator Mike Morrell. Learn more at ochoaboghforsenate.com

**CANDIDATE STATEMENT FOR
MEMBER OF THE STATE ASSEMBLY,
67TH ASSEMBLY DISTRICT**

KELLY SEYARTO, Republican

AGE: 60

OCCUPATION: Retired

EDUCATION AND QUALIFICATIONS:

I have spent the better part of my adult life serving my community and I'm asking for your vote for State Assembly. Sacramento is dominated by a single political voice that is failing us. Instead of focusing on safe and reliable supplies of drinking water they propose water taxes. Instead of fixing our roads they want to take cars off of them and tax us more. Instead of keeping our communities safe from criminal activity, they want to let criminals out of jail. This at a time when California has become too expensive for average residents like you and me to live and to raise families.

After a 35 year career as a firefighter, and serving 12 years on the Murrieta City Council, I am committed to working for you. My wife of 32 years and 3 daughters have made California our home and I'm running for the State Assembly to get things done, not play politics. When my unit was called to put out a fire that's exactly what we did and right now Sacramento and our state are on fire. I will work to make California more affordable; to make sure we have a sustainable supply of water for the dry years; to make opportunities available to our children to dream big; and to keep our homes and our families safe from acts of violent crime. It would be my honor to serve and represent you in the State Assembly.

To learn more check out www.kellyseyarto.com

**CONTINUED
ON NEXT
PAGE**

**CANDIDATE STATEMENT FOR
MEMBER OF THE STATE ASSEMBLY,
67TH ASSEMBLY DISTRICT**

JEREMY SMITH, Republican

OCCUPATION: Business Owner / Councilmember

EDUCATION AND QUALIFICATIONS:

Sacramento has failed us. I'm running for State Assembly to restore common sense principles and economic prosperity in California. I understand the challenges we face in Riverside County, and I share our values.

I'm proud to call Riverside County home. I was born and raised here, and I graduated from our public schools. I worked full-time to put myself through graduate school at California Baptist University and then started my small business here. My wife, Elissa, and I are raising our two daughters here in Riverside County.

I'm honored to serve as a City Councilmember, where I have a proven track record of delivering results:

- Balanced budgets
- Invested in public safety
- Increased transparency and accountability
- Embraced innovation and technology to streamline city government

With my experience in the private sector and on City Council, I know how to get government out of the way to better serve residents and businesses. If you elect me to represent you in the State Assembly, I will work to improve our quality of life. I pledge to:

OPPOSE ALL NEW TAXES AND TAX INCREASES

Fight for business-friendly policies to keep jobs from leaving California

Empower local control in the decision-making process

Ensure parents can decide how best to educate their children

Increase transparency and accountability in Sacramento

Fight for laws to protect our neighborhoods and keep dangerous criminals in prison

I am honored to be endorsed by local Mayors, Councilmembers, and other community leaders across our Assembly district. I would be grateful to receive your vote for California State Assembly.

www.SmithforCA.com

**CONTINUED
ON NEXT
PAGE**

**CANDIDATE STATEMENT FOR
MEMBER OF THE STATE ASSEMBLY,
67TH ASSEMBLY DISTRICT**

STEVEN J. MANOS, Republican
OCCUPATION: Mayor / Businessman
EDUCATION AND QUALIFICATIONS:

AGE: 43

Raised in Lake Elsinore, I've served as Mayor and Council member for 7 years. I have actively supported strong law enforcement, used economic development to create new jobs, lowered property taxes, and improved Lake Elsinore's fiscal position, resulting in an improved City credit rating.

Service to the community includes:

- Chairman of the Riverside County Habitat Conservation Authority.
- Chairman of the Airport Land Use Commission.
- Representative on the Southern California Association of Governments - representing Corona, Canyon Lake, Lake Elsinore, and Wildomar
- Director for the League of California Cities

A qualified representative for the people of our region must be willing to:

- Make Public Safety the State's #1 Priority Again
- Fight for local solutions,
- Stop Government and Special interest greed,
- And finally END the cycle of this State taxing our friends and neighbors into the poor house or right out of California.

Prior to taking elected office I took pleasure in being a devoted volunteer and charitable contributor having served at the local school district, my church, and the community. I am a founding member of Lake Elsinore's major disaster Citizen Emergency Response Team.

I have been happily married since 1999 to my wife, Veronica. We are raising four wonderful children who are following in our footsteps in volunteerism and look forward to becoming future leaders.

I ask for you to Vote Steve Manos on March 3rd.

(951) 419-5770

info@stevemanos.com

**CANDIDATE STATEMENT FOR
MEMBER OF THE STATE ASSEMBLY,
67TH ASSEMBLY DISTRICT**

NICK PARDUE, Republican
OCCUPATION: Educator / Veteran
EDUCATION AND QUALIFICATIONS:

I am a US Army Veteran proudly serving our country for 4 years. Graduated from UC Santa Barbara with a BA in History. I hold an MA in Educational Administration from Grand Canyon University. I have spent 25 years in education, the last 15 years with the Perris Union High School District as an Economics and History Teacher at Paloma Valley High School.

I am a Family man, husband and father of 3 who has raised my children in Murrieta since 2002. Southwest Riverside County has been our home and a great place to raise a family. My hope is to see our area grow and prosper for the next generation.

- I hold strong Conservative views on limited government and I am disgusted with high taxes and wasteful spending.
- I understand the need for greater freedom for parents to determine curriculum choices, including the fact that students don't need to go to college to find success. We need the trades and other job skills as options for our students.
- Poor discipline and ridiculous State legislation leaves dangerous students on campus jeopardizing the learning environment and the safety of all our students.

I have taught in both Public and Private Schools and have decided that Sacramento needs to hear from someone who has actually been in the classroom. School safety concerns, stemming from recent violence and a strong faith that I am being called to action is what has motivated me to run for State Assembly.

**CANDIDATE STATEMENT FOR
RIVERSIDE COUNTY SUPERVISOR,
DISTRICT 3**

CHUCK WASHINGTON

OCCUPATION: Riverside County Supervisor

EDUCATION AND QUALIFICATIONS:

As your County Supervisor, I'm leading the fight to strengthen public safety, create jobs, improve transportation, enhance education, and balance the budget.

My expertise as a small-business owner has helped me to increase the County's investment in ECONOMIC DEVELOPMENT for JOB GROWTH.

I've successfully pushed tough reforms that mandate County departments to operate more efficiently while improving service and reining in rising costs.

By leading efforts to build new freeway off-ramps and thruways and rebuild crumbling streets, I'm working to REDUCE TRAFFIC CONGESTION.

I've pushed the County Health System from a loss of \$1 million/week to a successful OPERATION RUNNING IN THE BLACK with improved access to quality health care. We also have built partnerships with local school districts to expand services to students and their families.

I will continue my efforts to IMPROVE YOUR QUALITY OF LIFE by creating better paying jobs in Riverside County and forcing County Government to live within its means.

I served as a Navy officer, and I've been married to my wife, Kathy, for 45 years. We have one daughter and three grandchildren. I've earned support from police, firefighters, business owners, teachers, and veterans. I would be honored to receive your vote.
www.ChuckWashington.com

**CANDIDATE STATEMENT FOR
RIVERSIDE COUNTY SUPERVISOR,
DISTRICT 3**

EDISON GOMEZ-KRAUSS

OCCUPATION: ESL Teacher

EDUCATION AND QUALIFICATIONS:

I'm an ESL teacher with a bachelor's in gastronomy. Education is my profession, passion and priority.

My entire life, I've worked with underserved communities; focusing on extracurricular activities for the youth, civil rights, environmental justice, animal cruelty, and sustainable solutions to strengthen local business. For the last 3 years I have fought alongside the small farmers of Riverside County to keep Big Agriculture out of our communities.

I believe in lowering barriers for locally owned small businesses to stimulate regional economies. As your supervisor I will fight to end gentrification in our rural communities and pursue projects that benefit the many instead of lining the pockets of the few. The objective of housing projects should be to improve quality and affordability for our residents.

I will support inclusive legislation that allows Cannabis entrepreneurs to participate in the legal market and put an end to the violence and uncertainty our unincorporated communities face.

I support connecting our cities and towns through the modernization of our public transport infrastructure to decongest freeways and highways while reducing overall emissions. Your vote supports a candidate that believes government should value its residents more than its corporate donors: Because money doesn't vote, people do.

Edisongk2020.com

**CAN'T MAKE IT ON ELECTION DAY?
WE'RE MAKING IT EASY TO VOTE EARLY**



AT THE REGISTRAR OF VOTERS OFFICE

2720 Gateway Drive, Riverside, CA 92507
February 3 through March 2
(excluding Holidays)

Monday through Friday
8:00 a.m. to 5:00 p.m.

Saturday, February 22 and February 29
9:00 a.m. to 4:00 p.m.

Election Day, March 3
7:00 a.m. to 8:00 p.m.

AND AT THE FOLLOWING LOCATIONS

February 21 - 23, Friday through Sunday, 10:00 a.m. to 4:00 p.m.

**GALLERIA
AT TYLER**

1299 Galleria at Tyler
Riverside, CA 92503

Westfield

72-840 Highway 111
Palm Desert, CA 92260



**PROMENADE
TEMECULA**

40820 Winchester Road
Temecula, CA 92591

VOTE-BY-MAIL

You can request your **OFFICIAL VOTE-BY-MAIL BALLOT** by using the application on the back of this County Voter Information Guide. Return your Vote-by-Mail ballot by mail or at the following drop-off locations throughout Riverside County February 3 to March 2.

★ ★ ★ ★ ★	★ ★ ★ ★ ★	★ ★ ★ ★ ★																																
<ul style="list-style-type: none"> • City Clerk's Offices (as listed) • The Registrar of Voters Office up until close of polls on Election Day. • The Registrar of Voters 24-hour Drop Boxes. • At any Polling Place within the State of California on Election Day. 	<p align="center"><u>Participating City Clerk's Offices</u></p> <table border="0"> <tr> <td>Banning</td> <td>La Quinta</td> </tr> <tr> <td>Beaumont</td> <td>Menifee</td> </tr> <tr> <td>Blythe</td> <td>Moreno Valley</td> </tr> <tr> <td>Calimesa</td> <td>Murrieta</td> </tr> <tr> <td>Canyon Lake</td> <td>Norco</td> </tr> <tr> <td>Cathedral City</td> <td>Palm Desert</td> </tr> <tr> <td>Coachella</td> <td>Palm Springs</td> </tr> <tr> <td>Corona</td> <td>Perris</td> </tr> <tr> <td>Desert Hot Springs</td> <td>Rancho Mirage</td> </tr> <tr> <td>Eastvale</td> <td>Riverside</td> </tr> <tr> <td>Hemet</td> <td>(open until 8:00</td> </tr> <tr> <td>Indian Wells</td> <td>p.m. on Election</td> </tr> <tr> <td>Indio</td> <td>Day)</td> </tr> <tr> <td>Jurupa Valley</td> <td>San Jacinto</td> </tr> <tr> <td>Lake Elsinore</td> <td>Temecula</td> </tr> <tr> <td></td> <td>Wildomar</td> </tr> </table>	Banning	La Quinta	Beaumont	Menifee	Blythe	Moreno Valley	Calimesa	Murrieta	Canyon Lake	Norco	Cathedral City	Palm Desert	Coachella	Palm Springs	Corona	Perris	Desert Hot Springs	Rancho Mirage	Eastvale	Riverside	Hemet	(open until 8:00	Indian Wells	p.m. on Election	Indio	Day)	Jurupa Valley	San Jacinto	Lake Elsinore	Temecula		Wildomar	<p align="center">Please visit our website for all of the drop-off locations throughout Riverside County at</p> <p align="center"><u>WWW.VOTEINFO.NET</u></p> <p align="center">or</p> <p align="center">call our office at (951) 486-7200 or (800) 773-VOTE (8683)</p>
Banning	La Quinta																																	
Beaumont	Menifee																																	
Blythe	Moreno Valley																																	
Calimesa	Murrieta																																	
Canyon Lake	Norco																																	
Cathedral City	Palm Desert																																	
Coachella	Palm Springs																																	
Corona	Perris																																	
Desert Hot Springs	Rancho Mirage																																	
Eastvale	Riverside																																	
Hemet	(open until 8:00																																	
Indian Wells	p.m. on Election																																	
Indio	Day)																																	
Jurupa Valley	San Jacinto																																	
Lake Elsinore	Temecula																																	
	Wildomar																																	

Language Services

The County of Riverside is making voting easier in 2020! Some polling places (but not all) will have translated sample ballots that voters can use as a reference tool when voting. Please visit www.voteinfo.net to find a list of polling places in Riverside County and the translated sample ballots that will be available at each. This will help you determine if your polling place will have one of these translated sample ballots in your preferred language.

If you wish to see one of these translated sample ballots before Election Day, you may request one. You can request one by calling (800) 773-VOTE (8683) or by visiting www.voteinfo.net. Please be aware that only voters who live in particular areas can receive these translated sample ballots. Requests must be received no later than 7 days before an election.

Additionally, remember that if you need assistance you may bring up to two people to assist you in voting, as long as they are not representatives from your employer or your union (if you have one). Bring a family member or friend!

Servicios de Idioma

¡En 2020, el Condado de Riverside facilita el proceso de votación! Algunas casillas electorales (pero no todas) contarán con muestras de boletas de votación traducidas que los votantes pueden usar como referencia al momento de votar. Por favor visite www.voteinfo.net para ver una lista de casillas electorales en el Condado de Riverside y las muestras de boletas de votación traducidas que estarán disponibles en cada una de ellas para referencia. Esto le ayudará a determinar si su casilla electoral que le corresponde contará con boletas de votación traducidas en su idioma de preferencia.

Si desea ver una de estas muestras de boletas de votación traducidas antes del Día de Elección, puede solicitar una. Para hacerlo, llame al (800) 773-VOTE (8683), o visite www.voteinfo.net. Por favor tenga en cuenta que solamente los votantes que residen en determinadas áreas pueden recibir estas muestras de boletas de votación traducidas. Las solicitudes deben ser recibidas a más tardar 7 días antes de la elección.

Además, recuerde que si necesita ayuda, puede llevar hasta dos personas para que lo asistan en la votación, siempre que no sean representantes de su empleador o su sindicato (si lo tiene). ¡Lleve a un familiar o un amigo!

語言服務

河濱縣要讓 2020 年投票變得更容易！某些（但不是所有）投票所將會提供翻譯版的樣本選票，選民可以在投票時使用這些樣本選票作為參考工具。請瀏覽 www.voteinfo.net 以查詢河濱縣的投票所清單，並瞭解每個投票所將會提供哪些翻譯版的樣本選票。這有助於您確定您的投票所是否會提供以您的慣用語言翻譯的樣本選票。

如果您希望在選舉日以前看到其中一種翻譯版的樣本選票，請致電 (800)773-VOTE (8683) 或者造訪 www.voteinfo.net 以便索取樣本選票。請注意，只有居住在特定地區的選民才能取得這些翻譯版的樣本選票。此類申請最晚必須在選舉前 7 天收到。

此外，請記得，如果您需要協助，可以由最多兩個除了您的僱主或工會（如果有）代表以外的人陪同前往投票所。投票時最好帶上一名家人或朋友！

Các Dịch Vụ Ngôn Ngữ

Quận Riverside đang nỗ lực để việc bầu cử trở nên dễ dàng hơn vào năm 2020! Một số địa điểm bỏ phiếu (nhưng không phải tất cả) sẽ dịch mẫu phiếu bầu để cử tri có thể tham khảo khi bỏ phiếu. Vui lòng truy cập www.voteinfo.net để tìm danh sách các địa điểm bỏ phiếu tại Quận Riverside và những mẫu phiếu bầu được dịch sẵn tại mỗi địa điểm. Việc này sẽ giúp quý vị xác định xem địa điểm bỏ phiếu của quý vị có mẫu phiếu bầu bằng ngôn ngữ ưu tiên của quý vị hay không.

Nếu muốn, quý vị có thể yêu cầu xem mẫu phiếu bầu được dịch trước Ngày Bầu Cử bằng cách gọi điện đến số (800) 773-VOTE (8683) hoặc truy cập www.voteinfo.net. Vui lòng lưu ý rằng chỉ những cử tri sống tại một số khu vực đặc biệt mới có thể nhận được mẫu phiếu bầu đã được dịch. Quý vị phải gửi yêu cầu trước ngày bầu cử ít nhất 7 ngày.

Ngoài ra, nếu quý vị cần trợ giúp, quý vị có thể đi cùng tối đa hai người để giúp quý vị bỏ phiếu, miễn là họ không phải là đại diện từ chủ lao động hoặc công đoàn của quý vị (nếu có). Hãy đi cùng một thành viên trong gia đình hoặc bạn bè!

Mga Serbisyo sa Wika

Mas pinapadali ng County ng Riverside ang pagboto sa 2020! Magkakaroon ng mga nakasalin na halimbawang balota ang ilang lugar ng botohan (ngunit hindi lahat) na maaaring gamitin ng mga botante bilang kanilang sanggunian kapag bumoboto. Maaaring bumisita sa www.voteinfo.net para makita ang listahan ng mga lugar ng botohan sa County ng Riverside at ang mga nakahandang salin na halimbawang balota sa bawat lugar. Makakatulong ito sa iyo upang malaman kung mayroong nakasalin na halimbawang balota sa iyong gustong wika sa iyong lugar ng botohan.

Maaari kang humiling kung gusto mong makita ang isa sa mga nakasalin na halimbawang balota bago ang Araw ng Halalan. Maaari itong hilingin sa pamamagitan ng pagtawag sa (800) 733-VOTE (8683) o pagbisita sa www.voteinfo.net. Mangyaring intindihin na ang mga botante na nakatira sa mga partikular na lugar lamang ang maaaring makatanggap ng mga nakasalin na halimbawang balota. Kailangan matanggap ang mga hiling nang hindi hihigit sa 7 araw bago ang halalan.

Bukod dito, kung kailangan mo ng tulong, maaari kang magsama ng hanggang dalawang tao para tulungan ka sa pagboto, hangga't hindi sila mga kinatawan ng iyong employer o unyon (kung mayroon ka). Magsama ng kapamilya o kaibigan!

언어 서비스

리버사이드 카운티의 2020년 투표가 더욱 쉬워졌습니다! 일부 투표소에서 번역된 투표용지 견본을 배치해 유권자가 투표 시에 참고할 수 있게 했습니다 (전체 투표소는 아님). www.voteinfo.net에서 리버사이드 카운티의 투표소 목록과 해당 투표소에서 제공하는 각각의 투표용지 견본을 확인하십시오. 해당 정보를 통해 귀하의 투표소가 귀하의 선호 언어로 투표용지 견본을 제공하는지 확인하는 데 도움을 받을 수 있습니다.

선거일 전에 번역된 투표용지 견본을 확인하고 싶은 경우 견본을 요청할 수 있습니다. (800) 773-VOTE (8683) 번호로 전화하시거나 www.voteinfo.net에 방문하여 요청하십시오. 특정 지역에 거주하는 유권자만 번역된 투표용지 견본을 받을 수 있으니 유의하시기 바랍니다. 견본 요청은 선거 7일 전까지 완료되어야 합니다.

또한 투표를 위한 지원이 필요한 경우, 고용주 또는 조합 대리인(있는 경우)을 제외한 최대 2인과 함께 투표소에 방문할 수 있음을 유의하시기 바랍니다. 가족 또는 친구와 함께 오시기 바랍니다!



Conditional Voter Registration

Did you forget to register or update your voter registration? No Problem! A new law allows you to register to vote and vote until 8:00 p.m. on Election Day at your county elections office or at any vote center or polling place in your county. This process is called Conditional Voter Registration (CVR) and is commonly referred to as Same Day Voter Registration. Here's how it works:

1. Visit the Registrar of Voters office located at 2720 Gateway Drive, Riverside, CA 92507.
2. Complete a voter registration card or register online at *RegisterToVote.ca.gov*.
3. Vote your ballot at your county elections office, vote center, or polling place.
4. Once the county elections official processes your registration and determines you are eligible, you will be registered to vote and your ballot will be counted.

To learn more about Conditional Voter Registration, visit vote.ca.gov.

If you have questions regarding Conditional Voter Registration, please call (951) 486-7200 or toll free (800) 773-VOTE (8683).

You may check the status of your voter registration at www.voteinfo.net/AmIRegistered.



California Motor Voter

The California Motor Voter program is making registering to vote at the California Department of Motor Vehicles (DMV) more convenient and secure. All eligible individuals completing driver license or ID card or change of address transactions at the DMV will be registered to vote with the California Secretary of State unless they "opt out" of automatic voter registration.

The California Motor Voter program applies to Californians who are 18 years or older and meet the following criteria:

- A United States citizen and a resident of California.
- Not currently in state or federal prison or on parole for the conviction of a felony.
- Not currently found mentally incompetent to vote by a court.

Note: Voter pre-registration is available for those 16 and 17 years of age. Their voter registration will become active automatically when they turn 18.

Before visiting a DMV field office, we recommend making an appointment. Visit <https://www.dmv.ca.gov/portal/dmv/detail/portal/foa/>. You can also use DMV online services (<https://www.dmv.ca.gov/portal/dmv/dmv/onlinesvcs>) to renew your driver license or ID card or change your address.

If you indicate you're eligible to vote, once you complete your driver license or state ID renewal form transaction online, by mail or in person at the DMV, your voter information is then transmitted securely and electronically to the California Secretary of State.

Please note that drivers with an AB 60 driver's license are not eligible to participate in the California Motor Voter program and are not eligible to vote.

For more information, visit MotorVoter.sos.ca.gov.

To register to vote online, visit RegisterToVote.ca.gov.



TOGETHER, WE COUNT!
The Census 2020 is closer than you think!

CENSUS 2020

¡JUNTOS, CONTAMOS!
¡El Censo 2020 está más cerca de lo que piensa!



Here's what it is and how you can make your community stronger.
Eh aquí lo que significa y como usted puede fortalecer su comunidad.



EVERYONE COUNTS / TODOS CUENTAN

The census counts every person living in the U.S. once, only once and in the right place.
El censo cuenta a cada persona viviendo en los Estados Unidos solo una vez y en el lugar correcto.



IT'S ABOUT \$700 BILLION / SETRATA DE \$700 BILLONES

Census data determine how \$700 billion are spent and how much comes to our region.
La información del censo determina como \$700 billones serán gastados y la cantidad que será para nuestra región.



LOCAL PROGRAMS / PROGRAMAS LOCALES

Based on population, funds would be allocated to create or improve schools, healthcare, roads, housing, and crime prevention.
Basado en la población los fondos serán usados para crear o mejorar escuelas, cuidado médico, calles y carreteras, vivienda y prevención del crimen.



FAIR REPRESENTATION / REPRESENTACION JUSTA

Every 10 years, the results of the census determine how many representatives each state gets.
Cada 10 años, los resultados Del censo sirven para determinar el número de escaños por cada estado.



IE Counts



@census_ie



IECounts.org

VOTER BILL OF RIGHTS

YOU HAVE THE FOLLOWING RIGHTS:

★ 1 The right to vote if you are a registered voter.

You are eligible to vote if you are:

- a U.S. citizen living in California
- at least 18 years old
- registered where you currently live
- not currently in state or federal prison or on parole for the conviction of a felony
- not currently found mentally incompetent to vote by a court

★ 2 The right to vote if you are a registered voter even if your name is not on the list. You will vote using a provisional ballot. Your vote will be counted if elections officials determine that you are eligible to vote.

★ 3 The right to vote if you are still in line when the polls close.

★ 4 The right to cast a secret ballot without anyone bothering you or telling you how to vote.

★ 5 The right to get a new ballot if you have made a mistake, if you have not already cast your ballot. You can:

Ask an elections official at a polling place for a new ballot,

Exchange your vote-by-mail ballot for a new one at an elections office or at your polling place, or

Vote using a provisional ballot.

★ 6 The right to get help casting your ballot from anyone you choose, except from your employer or union representative.

★ 7 The right to drop off your completed vote-by-mail ballot at any polling place in California.

★ 8 The right to get election materials in a language other than English if enough people in your voting precinct speak that language.

★ 9 The right to ask questions to elections officials about election procedures and watch the election process.

If the person you ask cannot answer your questions, they must send you to the right person for an answer. If you are disruptive, they can stop answering you.

★ 10 The right to report any illegal or fraudulent election activity to an elections official or the Secretary of State's office.

🖥️ On the web at www.sos.ca.gov

📞 By phone at **(800) 345-VOTE (8683)**

✉️ By email at elections@sos.ca.gov

IF YOU BELIEVE YOU HAVE BEEN DENIED ANY OF THESE RIGHTS, CALL THE SECRETARY OF STATE'S CONFIDENTIAL TOLL-FREE VOTER HOTLINE AT (800) 345-VOTE (8683).

FROM



DID YOU SIGN YOUR APPLICATION?

**REGISTRAR OF VOTERS
2724 GATEWAY DRIVE
RIVERSIDE CA 92507-0923**



ACCOMMODATIONS FOR VOTERS WITH DISABILITIES

A "YES" or "NO" printed under the disabled symbol/arrow on the back cover of this guide indicates whether or not your assigned polling place is accessible to physically disabled voters. Please be advised of the following alternate ways you may cast your ballot.

- **By Mail** - You may request a Vote-by-Mail ballot. Simply complete the application on the back cover of this guide, or, you may contact the Registrar of Voters Office by calling (951) 486-7200, (800) 773-VOTE (8683), TTY (951) 697-8966. The application must be received by the Registrar of Voters Office by the deadline given. Your ballot must be received at the Registrar of Voters Office no later than 8:00 p.m. on Election Day or be postmarked on or before Election Day and received no later than three days after Election Day to be counted.
- **Early Voting** - You may vote at the Registrar of Voters office located at 2720 Gateway Drive, Riverside, CA 92507, February 3 - March 2 (excluding Holidays), Monday through Friday, 8:00 a.m. to 5:00 p.m.; Saturday, February 22 and February 29, 9:00 a.m. to 4:00 p.m.; and Election Day, March 3, 7:00 a.m. to 8:00 p.m. Please visit our website at www.voteinfo.net for additional early voting locations and information.
- **Curbside Voting on Election Day** - If you are unable to enter the polling place due to a physical disability, you may request Curbside Voting at your assigned polling place. Curbside Voting doorbells are available at some polling places. If you require Curbside Voting assistance you may call (877) 663-9906 before going to your assigned polling place and/or when you arrive at the facility. An Election Officer will be contacted prior to your arrival to meet you at the curb.
- **Large Print State Voter Information Guide** - If you prefer a large print State Voter Information Guide, you may request one by contacting the California Secretary of State's Office at (800) 345-VOTE (8683), or by contacting the Registrar of Voters Office at (951) 486-7200, (800) 773-VOTE (8683), TTY (951) 697-8966.
- **Disability Rights California** will operate a statewide hotline on March 3, Election Day, from 7 a.m. to 8 p.m. The phone number is (888) 569-7955.

REGISTRAR OF VOTERS
2724 GATEWAY DRIVE
RIVERSIDE, CA 92507-0918



NONPROFIT
U.S. POSTAGE
PAID
Registrar of Voters
Riverside

VOTE-BY-MAIL BALLOT APPLICATION

APPLICATION MUST BE RECEIVED NO LATER THAN FEBRUARY 25, 2020.

I hereby request a ballot for the Consolidated Presidential Primary Election, March 3, 2020.

PLEASE PRINT:

NAME AS REGISTERED _____

RESIDENCE ADDRESS AS REGISTERED _____

CITY STATE ZIP _____

MAIL BALLOT TO:		
ADDRESS (IF DIFFERENT)		
CITY	STATE	ZIP

I declare, under penalty of perjury, that the information provided is true and correct to the best of my knowledge.

SIGNATURE REQUIRED

SIGNATURE OF VOTER DATE

33-BCov NPP PRIMARY 03-03-2020

If you want to vote for President, you must select a party.
I am not registered with a qualified political party. However, for this primary election only, I request a Vote-by-Mail ballot with the presidential candidates from the party below (check one box):

- American Independent Party
- Democratic Party
- Libertarian Party

To vote in the Presidential Primary for the Green, Peace and Freedom, or Republican Party, you must re-register to vote with one of those parties. You can re-register to vote online at www.registertovote.ca.gov.

Check this box to request PERMANENT VOTE-BY-MAIL status.

↓ POSTMASTER DELIVER TO ↓

✓ You May Cast Your Vote Early

At

THE REGISTRAR OF VOTERS OFFICE
2720 Gateway Drive, Riverside, CA 92507

February 3 through March 2
(Excluding Holidays)

Monday through Friday, 8:00 a.m. to 5:00 p.m.

Saturday, February 22 and February 29,
9:00 a.m. to 4:00 p.m.

Election Day March 3
7:00 a.m. to 8:00 p.m.

Please visit our website at www.voteinfo.net for additional early voting locations and information.

IMPORTANT NOTICE!!!

Accessible Voting Unit available at all polling locations.

TO MARK YOUR VOTE
FILL IN THE OVAL



VOTE!!!

For a demonstration on marking your ballot visit www.voteinfo.net

BALLOT TYPE 047

VOTE EARLY

IT'S QUICK
IT'S EASY
IT'S CONVENIENT

GET OUT OF LINE ON ELECTION DAY!
VOTE-BY-MAIL

↓ LOCATION OF YOUR POLLING PLACE ↓



ACCESS?

