



Registrar of Voters

Polling Place Location  
on Back Cover

Polls Open  
March 2, 2021  
7:00 a.m. to 8:00 p.m.

.....

Registration Deadline  
February 16, 2021  
Additional Information Inside

.....

Quick • Easy • Convenient

Vote-By-Mail  
February 1st - February 23rd  
Application on Back Cover

.....

AVISO IMPORTANTE  
Una traducción en Español de esta Guía de Información del Condado Para el Votante puede obtenerse en la oficina del Registro de Votantes llamando al (951) 486- 7200 o (800) 773-VOTE (8683) o visite nuestro sitio web [www.voteinfo.net](http://www.voteinfo.net)

City of Eastvale  
Special Municipal Measure Election

*Tuesday, March 2, 2021  
County Voter Information Guide*



# Get out of line on Election Day!

## Vote-by-Mail

**Vote at home using your Vote-By-Mail ballot**

No Postage Required

Quick, easy, convenient...  
from the comfort of your home!  
(see application on back cover)



or

## Drop off your Vote-by-Mail ballot

**at the Registrar of Voters office  
or the Eastvale City Clerk's office**

(see inside for location information and hours)

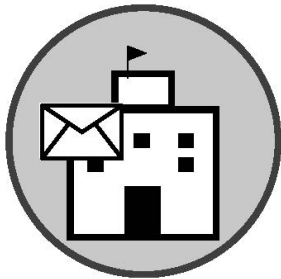


or

## Vote Early

**at the Registrar of Voters office**

(see inside for location information and hours)



For more information visit [www.voteinfo.net](http://www.voteinfo.net) or call (951) 486-7200 or (800) 773-VOTE (8683)



# CITY OF EASTVALE

12363 Limonite Avenue | Suite 910 | Eastvale, CA 91752  
951.361.0900

Dear City of Eastvale Voter:

On March 2<sup>nd</sup>, 2021, the City of Eastvale will conduct an election for the purpose of voting on the "City of Eastvale No-Tax Increase Gann Limit Measure", also known as Measure A. Unlike the November 2020 election, mail-in ballots will only be sent to voters who have opted to receive their ballots by mail when they registered to vote. The Riverside County Registrar of Voters will be conducting this election for the City and all ballots will be mailed, received and counted by the Registrar's Office. For those voting by mail, postage-paid envelopes will be provided for mailed ballot returns. Residents are encouraged to vote early! It is important to ensure that the back of the return envelope is signed by the voter before mailing. **Unsigned ballots will not be counted.**

Eastvale City Hall will also serve as a ballot drop-off location, located at 12363 Limonite Avenue, Suite 910, Eastvale, CA 91752. City Hall is open Monday through Thursday, 8:00 a.m. to 5:30 p.m., excluding holidays. Ballots may also be dropped off at the Registrar of Voters Office, located at 2720 Gateway Drive, Riverside, CA 92507. The Registrar's Office is open Monday through Friday, 8:00 a.m. to 5:00 p.m., excluding holidays. Both City Hall and the Registrar's Office will remain open until 8:00 p.m. on Election Day, Tuesday, March 2, 2021. Voted ballots must be received no later than 8:00 p.m. on Election Day (ballots postmarked on Election Day must be received no later than three days after Election Day to be counted).

Please note that February 16, 2021, is the last day to register to vote or transfer registration for this election. Voter registration cards are available at Eastvale City Hall. Voter registration is also available on the Registrar of Voters website at [www.voteinfo.net](http://www.voteinfo.net).

The City Clerk's Office and the Registrar of Voters Office are dedicated to serving the voters of Eastvale and ensuring the integrity and security of the election process. If you have any questions, please contact the City Clerk's Office at (951) 703-4420 or the Registrar of Voters Office at (800) 773-VOTE (8683) or (951) 486-7200, TTY (951) 697-8966.

Sincerely,

Marc A. Donohue, MMC  
City Clerk/Communications Director

# HOW TO MARK YOUR OFFICIAL PAPER BALLOT

Please refer to the following instructions on how to properly complete your Official Paper Ballot:

- Completely fill in the oval next to your choice like the example provided.
- Use a black ink pen or marker. Do not use red ink.
- Completely filling in the oval is preferred.
- Please keep the Vote-by-Mail ballot folded the same way as you received it.

**TO MARK YOUR VOTE  
FILL IN THE OVAL**



**VOTE!!!**

## IMPORTANT NOTE!

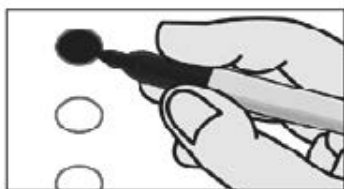
You must fill out and sign the return envelope  
for your Vote-by-Mail ballot to be counted.

---

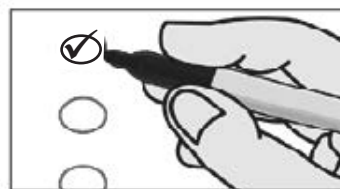
**MAKE YOUR VOTE COUNT...MARK YOUR BALLOT CORRECTLY**

## EXAMPLE

### CORRECT



### INCORRECT



For a demonstration on marking your ballot,  
please visit our website at [www.voteinfo.net](http://www.voteinfo.net)

# SAMPLE BALLOT / BOLETA DE MUESTRA

## SPECIAL MUNICIPAL MEASURE ELECTION / ELECCIÓN ESPECIAL DE MEDIDA MUNICIPAL

**March 2, 2021 / 2 de marzo de 2021**

Mark your choices on your Sample Ballot, then refer to it when you vote / Marque sus opciones en su Boleta de Muestra, luego refiérase a esta cuando esté votando

MEASURE SUBMITTED TO THE VOTERS MEDIDA SOMETIDA A LOS VOTANTES
CITY CIUDAD
CITY OF EASTVALE CIUDAD DE EASTVALE
<p><b>A</b> <b>City of Eastvale No-Tax Increase Gann Measure.</b> Shall the measure adjusting the City of Eastvale's appropriations limit be adopted to allow increased budgeting of City revenues for general governmental purposes, including COVID response, fire/emergency medical protection, law enforcement, and street safety/repair for four years (This measure doesn't increase taxes or impose a new tax.)?</p> <p><b>A</b> <b>Medida Gann de Aumento sin Impuestos de la Ciudad de Eastvale.</b> ¿Se adoptará la medida que ajusta el límite de asignaciones de la Ciudad de Eastvale para permitir un mayor presupuesto de los ingresos de la Ciudad para fines gubernamentales generales, incluida la respuesta COVID, protección médica contra incendios/emergencias, aplicación de la ley y seguridad/repación de calles durante cuatro años? (Esta medida no aumenta los impuestos o impone un nuevo impuesto)?</p>
<input type="radio"/> YES / SÍ
<input type="radio"/> NO / NO



# VOTER'S INFORMATION GUIDE SECTION

The following pages contain voter information applicable to your ballot which may include the following items:

- BALLOT MEASURES
- ANALYSES
- ARGUMENTS IN SUPPORT & IN OPPOSITION

Statements made on the following pages represent the views of the authors and are not endorsed by the County of Riverside.

Internet website addresses included in any statements are provided by the authors. The County of Riverside assumes no liability for the accuracy or content of websites listed therein.

Arguments in support of or in opposition to the ballot measures are opinions of the authors.

The text, grammar, and spelling are as submitted by the authors.

---

---

## POLLING PLACE REMINDER:

### NO ELECTIONEERING!



All electioneering, voter solicitation, etc. is prohibited within 100 feet in any direction of the room where voters are casting ballots at a polling place and at ballot drop off locations.

Avoid wearing or displaying campaign buttons, hats, t-shirts, and other political items.

CALIFORNIA ELECTIONS CODE §§319.5, 18370, 18371

## IMPARTIAL ANALYSIS OF MEASURE “A”

The City of Eastvale City Council has placed Measure A on the ballot. The measure asks the voters whether the City should change the City’s budget appropriations limit (“Gann Limit”) to allow the City to continue to budget for the expenditure all tax proceeds that the City receives for general governmental services, including police and fire protection services and roadway maintenance and repair. The Gann Limit is a requirement in State law that limits the amount of tax revenues that can be appropriated in the City’s annual budget.

Measure A does not impose any new tax or increase any existing tax. This City has existing tax revenue streams, including property tax, gas tax, sales tax, and vehicle license fees, which the City utilizes to provide services to Eastvale residents. Historically, the annual tax revenues received by the City have been less than the City’s Gann Limit. This means the City has been able to appropriate all of the incoming tax revenues in its budget. The City anticipates that in the next fiscal year its incoming tax revenues will exceed its Gann Limit due to increased economic development and the State’s return of vehicle license fees to the City in 2018, which was approximately \$4.9 million this year.

Eastvale’s Gann Limit was approved by local voters in 2012 based on a formula provided in State law. The Gann Limit is adjusted annually to account for inflation and population change, also pursuant to a formula in State law. The City’s current Gann Limit is \$25,638,639. Voters may approve an increase to the Gann Limit for reasons other than population and inflation. Any such change can last for up to four years unless extended by the voters. Measure A proposes to increase the Gann Limit to \$33,000,000 and will allow annual adjustments for inflation and population increase to continue. Measure A will expire four years from the date of voter approval.

If Measure A is not approved, the City’s ability to maintain current service levels may be negatively impacted. As development occurs, the City provides services to the new development, and the development generates tax revenues to the City that can be used to pay for those services. If the City’s appropriations are at the Gann Limit, the City will not be able to appropriate the additional tax proceeds generated by the new development to pay for services to the new development. Measure A would allow the City to increase appropriations for services proportionately to new development occurring in the City. Decisions about appropriation amounts are made by the City Council at public meetings during the budget process.

A “Yes” vote is a vote in favor of the proposed increase to the Gann Limit for four years. A “No” vote is a vote to make no changes to the City’s Gann Limit. This ordinance will be approved if simple majority (50% + 1) of the City of Eastvale electorate voting on Measure A votes “Yes”.

By: Erica Vega  
City Attorney, City of Eastvale

The above statement is an impartial analysis of Measure A. If you desire a copy of the measure, please call the City Clerk’s office at (951) 703-4420 and a copy will be mailed at no cost to you. You may also view the Full Text of Measure A at [www.eastvaleca.gov](http://www.eastvaleca.gov).

## ARGUMENT IN FAVOR OF MEASURE “A”

To maintain Eastvale’s safety and financial stability, **without raising taxes**, vote YES on A.

Since our City’s incorporation just 10 years ago, working together, we’ve brought numerous businesses to our community, created thousands of local jobs, and created a community where public safety is prioritized, keeping our community, neighborhoods and families safe.

We are so proud that Eastvale was recently ranked #2 in the State for fiscal health by the California State Auditor!

But because of the Gann Limit – a state required budget limit using a formula calculated by Sacramento when our City was younger -- the City cannot use all the funds we have available to maintain essential local services like increased law enforcement, emergency response, and traffic mitigation, without a vote of the people to adjust this State limit to meet our local needs.

### That’s why we need Measure A.

Measure A simply allows Eastvale to properly budget and spend available funds we have today, on the services we continue to need.

### Here’s what Measure A won’t do:

- Measure A does **not** raise taxes
- Measure A does **not** create new taxes
- Measure A does **not** cost the Eastvale taxpayer one cent

Without Measure A, our dynamic and growing community won’t be able to address our continuing public safety and traffic needs, even though we have the budget to do so!

### That’s why business, public safety, and civic leaders, including a unanimous City Council, support Measure A.

Don’t let Sacramento regulations stop Eastvale from taking care of local needs! **Vote YES on Measure A** to create prudent, responsible budget planning for our City’s current size and financial situation.

Get the facts. Visit: [www.eastvaleca.gov](http://www.eastvaleca.gov)

By: Donald Pettinger, Neighborhood Watch Program Leader  
Francesca Rife, Teacher  
George Rife, Kiwanis Member  
Leonard Mercado, Chamber Chairman, Business Owner

NO ARGUMENT FILED AGAINST MEASURE “A”

---

---

**CAN'T MAKE IT ON ELECTION DAY?  
WE'RE MAKING IT EASY TO VOTE EARLY**

---

---



**AT THE REGISTRAR OF VOTERS OFFICE**

**2720 Gateway Drive, Riverside, CA 92507**

**February 1 through March 1  
(excluding Holidays)**

**Monday through Friday  
8:00 a.m. to 5:00 p.m.**

**Election Day, March 2  
7:00 a.m. to 8:00 p.m.**

---

---

**VOTE-BY-MAIL**

You can request your **OFFICIAL VOTE-BY-MAIL BALLOT** by using the application on the back of this County Voter Information Guide. Return your Vote-by-Mail ballot by mail or at the following locations.

★ ★ ★ ★ ★	★ ★ ★ ★ ★	★ ★ ★ ★ ★
<b><u>Registrar of Voters office</u></b>	<b><u>Eastvale City Clerk's office</u></b>	<b><u>Polling Place Locations</u></b>
2720 Gateway Drive Riverside, CA 92507	12363 Limonite Ave, Suite 910 Eastvale, CA 91752	Your assigned polling place is listed on the back of this guide.
February 1 through March 1 (excluding holidays)	February 1 through March 1 (excluding holidays)	Visit <a href="http://www.voteinfo.net">www.voteinfo.net</a> or call our office at (951) 486-7200 or (800) 773-VOTE (8683) for a complete list of polling place locations
Monday through Friday 8:00 a.m. to 5:00 p.m.	Monday through Thursday 8:00 a.m. to 5:30 p.m.	Election Day, March 2 7:00 a.m. to 8:00 p.m.
Election Day, March 2 7:00 a.m. to 8:00 p.m.	Election Day, March 2 7:00 a.m. to 8:00 p.m.	
The Registrar's office has a locked drop box at its entry for ballot drop off 24 hours a day beginning February 1.		



## **Language Services**

The County of Riverside is making voting easier in 2021! Some polling places (but not all) will have translated sample ballots that voters can use as a reference tool when voting. Please visit [www.voteinfo.net](http://www.voteinfo.net) to find a list of polling places in Riverside County and the translated sample ballots that will be available at each. This will help you determine if your polling place will have one of these translated sample ballots in your preferred language.

If you wish to see one of these translated sample ballots before Election Day, you may request one. You can request one by calling (800) 773-VOTE (8683) or by visiting [www.voteinfo.net](http://www.voteinfo.net). Please be aware that only voters who live in particular areas can receive these translated sample ballots. Requests must be received no later than 7 days before an election.

Additionally, remember that if you need assistance you may bring up to two people to assist you in voting, as long as they are not representatives from your employer or your union (if you have one). Bring a family member or friend!

## **Servicios de Idioma**

¡El Condado de Riverside facilitará la votación en 2021! Algunas casillas electorales (pero no todas) contarán con muestras de boletas de votación traducidas que los votantes pueden usar como referencia al momento de votar. Por favor visite [www.voteinfo.net](http://www.voteinfo.net) para ver una lista de casillas electorales en el Condado de Riverside y las muestras de boletas de votación traducidas que estarán disponibles en cada una de ellas para referencia. Esto le ayudará a determinar si su casilla electoral que le corresponde contará con boletas de votación traducidas en su idioma de preferencia.

Si desea ver una de estas muestras de boletas de votación traducidas antes del Día de Elección, puede solicitar una. Para hacerlo, llame al (800) 773-VOTE (8683), o visite [www.voteinfo.net](http://www.voteinfo.net). Por favor tenga en cuenta que solamente los votantes que residen en determinadas áreas pueden recibir estas muestras de boletas de votación traducidas. Las solicitudes deben ser recibidas a más tardar 7 días antes de la elección.

Además, recuerde que si necesita ayuda, puede llevar hasta dos personas para que lo asistan en la votación, siempre que no sean representantes de su empleador o su sindicato (si lo tiene). ¡Lleve a un familiar o un amigo!

## **語言服務**

河濱縣要讓 2021 年投票變得更容易！某些（但不是所有）投票所將會提供翻譯版的樣本選票，選民可以在投票時使用這些樣本選票作為參考工具。請瀏覽 [www.voteinfo.net](http://www.voteinfo.net) 以查詢河濱縣的投票所清單，並瞭解每個投票所將會提供哪些翻譯版的樣本選票。這有助於您確定您的投票所是否會提供以您的慣用語言翻譯的樣本選票。

如果您希望在選舉日以前看到其中一種翻譯版的樣本選票，請致電 (800)773-VOTE (8683) 或者造訪 [www.voteinfo.net](http://www.voteinfo.net) 以便索取樣本選票。請注意，只有居住在特定地區的選民才能取得這些翻譯版的樣本選票。此類申請最晚必須在選舉前 7 天收到。

此外，請記得，如果您需要協助，可以由最多兩個除了您的僱主或工會（如果有）代表以外的人陪同前往投票所。投票時最好帶上一名家人或朋友。

## **Các Dịch Vụ Ngôn Ngữ**

Quận Riverside đang nỗ lực để việc bầu cử trở nên dễ dàng hơn vào năm 2021! Một số địa điểm bỏ phiếu (nhưng không phải tất cả) sẽ dịch mẫu phiếu bầu để cử tri có thể tham khảo khi bỏ phiếu. Vui lòng truy cập [www.voteinfo.net](http://www.voteinfo.net) để tìm danh sách các địa điểm bỏ phiếu tại Quận Riverside và những mẫu phiếu bầu được dịch sẵn tại mỗi địa điểm. Việc này sẽ giúp quý vị xác định xem địa điểm bỏ phiếu của quý vị có mẫu phiếu bầu bằng ngôn ngữ ưu tiên của quý vị hay không.

Nếu muốn, quý vị có thể yêu cầu xem mẫu phiếu bầu được dịch trước Ngày Bầu Cử bằng cách gọi điện đến số (800) 773-VOTE (8683) hoặc truy cập [www.voteinfo.net](http://www.voteinfo.net). Vui lòng lưu ý rằng chỉ những cử tri sống tại một số khu vực đặc biệt mới có thể nhận được mẫu phiếu bầu đã được dịch. Quý vị phải gửi yêu cầu trước ngày bầu cử ít nhất 7 ngày.

Ngoài ra, nếu quý vị cần trợ giúp, quý vị có thể đi cùng tối đa hai người để giúp quý vị bỏ phiếu, miễn là họ không phải là đại diện từ chủ lao động hoặc công đoàn của quý vị (nếu có). Hãy đi cùng một thành viên trong gia đình hoặc bạn bè!

## **Mga Serbisyo sa Wika**

Mas pinapadali ng County ng Riverside ang pagboto sa 2021! Magkakaroon ng mga nakasalin na halimbawang balota ang ilang lugar ng botohan (ngunit hindi lahat) na maaaring gamitin ng mga botante bilang kanilang sanggunian kapag bumaboto. Maaaring bumisita sa [www.voteinfo.net](http://www.voteinfo.net) para makita ang listahan ng mga lugar ng botohan sa County ng Riverside at ang mga nakahandang salin na halimbawang balota sa bawat lugar. Makakatulong ito sa iyo upang malaman kung mayroong nakasalin na halimbawang balota sa iyong gustong wika sa iyong lugar ng botohan.

Maaari kang humiling kung gusto mong makita ang isa sa mga nakasalin na halimbawang balota bago ang Araw ng Halalan. Maaari itong hilingin sa pamamagitan ng pagtawag sa (800) 773-VOTE (8683) o pagbisita sa [www.voteinfo.net](http://www.voteinfo.net). Mangyaring intindihin na ang mga botante na nakatira sa mga partikular na lugar lamang ang maaaring makatanggap ng mga nakasalin na halimbawang balota. Kailangan matanggap ang mga hiling nang hindi hihigit sa 7 araw bago ang halalan.

Bukod dito, kung kailangan mo ng tulong, maaari kang magsama ng hanggang dalawang tao para tulungan ka sa pagboto, hangga't hindi sila mga kinatawan ng iyong employer o unyon (kung mayroon ka). Magsama ng kapamilya o kaibigan!



## **Conditional Voter Registration**

Did you forget to register or update your voter registration? No Problem! You can register to vote and vote until 8:00 p.m. on Election Day at the Registrar of Voters office or any polling place. This process is called Conditional Voter Registration (CVR) and is commonly referred to as Same Day Voter Registration. Here's how it works:

1. Visit the Registrar of Voters office or any polling place.
2. Complete a voter registration card or register online at [RegisterToVote.ca.gov](https://RegisterToVote.ca.gov).
3. Vote your ballot.
4. Once the Registrar of Voters processes your registration and determines you are eligible, you will be registered to vote and your ballot will be counted.

To learn more about Conditional Voter Registration, visit [vote.ca.gov](https://vote.ca.gov).

If you have questions regarding Conditional Voter Registration, please call (951) 486-7200 or toll free (800) 773-VOTE (8683).

You may check the status of your voter registration at [www.voteinfo.net/AmIRegistered](https://www.voteinfo.net/AmIRegistered).



## **California Motor Voter**

The California Motor Voter program is making registering to vote at the California Department of Motor Vehicles (DMV) more convenient and secure. All eligible individuals completing driver license or ID card or change of address transactions at the DMV will be registered to vote with the California Secretary of State unless they "opt out" of automatic voter registration.

The California Motor Voter program applies to Californians who are 18 years or older and meet the following criteria:

- A United States citizen and a resident of California.
- Not currently in state or federal prison for the conviction of a felony.
- Not currently found mentally incompetent to vote by a court.

Note: Voter pre-registration is available for those 16 and 17 years of age. Their voter registration will become active automatically when they turn 18.

Before visiting a DMV field office, we recommend making an appointment. Visit <https://www.dmv.ca.gov/portal/dmv/detail/portal/foa/welcome> to get started. You can also use DMV online services (<https://www.dmv.ca.gov/portal/dmv/dmv/onlinecvcs>) to renew your driver license or ID card or change your address.

If you indicate you're eligible to vote, once you complete your driver license or state ID renewal form transaction online, by mail or in person at the DMV, your voter information is then transmitted securely and electronically to the California Secretary of State.

Please note that drivers with an AB 60 driver's license are not eligible to participate in the California Motor Voter program and are not eligible to vote.

For more information, visit [MotorVoter.sos.ca.gov](https://MotorVoter.sos.ca.gov).

To register to vote online, visit [RegisterToVote.ca.gov](https://RegisterToVote.ca.gov).



# Remote Accessible Vote-by-Mail (RAVBM) in Riverside County

---

**Voters who need an accessible option to mark their ballot privately can vote with Remote Accessible Vote-by-Mail.**

- Download, mark, and print your ballot at home
- Use your own assistive technology to read and mark the ballot
- Select the language for your ballot

RAVBM is not “internet voting.” You must print and return your marked ballot.



**You must request your RAVBM ballot by February 23<sup>rd</sup>**

## **How to vote from home (accessibly!) with RAVBM:**

### **1. Request an RAVBM ballot access link**

Contact the Registrar of Voters office by phone at (951) 486-7200 or (800) 773-VOTE (8683), by email at [rovweb@rivco.org](mailto:rovweb@rivco.org), or on the web at [www.voteinfo.net](http://www.voteinfo.net).

### **2. Mark your ballot**

Use the access link to open your ballot. Review and mark the ballot on your own computer, with your own assistive technology if needed.

### **3. Review and print your ballot**

Check your ballot and make corrections. Download and print your ballot.

### **4. Sign the Oath or Declaration and seal**

Follow the instructions downloaded with your ballot for preparing your return package.

### **5. Return your ballot**



By mail.



At the Registrar of Voters office or City Clerk.



At any polling place on Election Day.

Questions? Call Riverside County **(800) 733-VOTE (8683)**

# VOTER BILL OF RIGHTS

---

## YOU HAVE THE FOLLOWING RIGHTS:

**★ 1 The right to vote if you are a registered voter.**  
You are eligible to vote if you are:

- a U.S. citizen living in California
- at least 18 years old
- registered where you currently live
- not currently in state or federal prison for the conviction of a felony
- not currently found mentally incompetent to vote by a court

**★ 2 The right to vote if you are a registered voter even if your name is not on the list.** You will vote using a provisional ballot. Your vote will be counted if elections officials determine that you are eligible to vote.

**★ 3 The right to vote if you are still in line when the polls close.**

**★ 4 The right to cast a secret ballot** without anyone bothering you or telling you how to vote.

**★ 5 The right to get a new ballot if you have made a mistake,** if you have not already cast your ballot. You can:

**Ask an elections official at a polling place** for a new ballot,

**Exchange your vote-by-mail ballot** for a new one at an elections office or at your polling place, or

**Vote using a provisional ballot.**

**★ 6 The right to get help casting your ballot** from anyone you choose, except from your employer or union representative.

**★ 7 The right to drop off your completed vote-by-mail ballot at any polling place** in California.

**★ 8 The right to get election materials in a language other than English** if enough people in your voting precinct speak that language.

**★ 9 The right to ask questions to elections officials about election procedures** and watch the election process. If the person you ask cannot answer your questions, they must send you to the right person for an answer. If you are disruptive, they can stop answering you.

**★ 10 The right to report any illegal or fraudulent election activity** to an elections official or the Secretary of State's office.

🖥️ On the web at **[www.sos.ca.gov](http://www.sos.ca.gov)**

☎️ By phone at **(800) 345-VOTE (8683)**

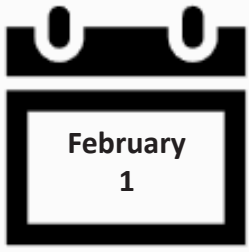
✉️ By email at **[elections@sos.ca.gov](mailto:elections@sos.ca.gov)**

---

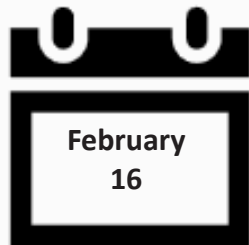
**IF YOU BELIEVE YOU HAVE BEEN DENIED ANY OF THESE RIGHTS, CALL THE SECRETARY OF STATE'S  
CONFIDENTIAL TOLL-FREE VOTER HOTLINE AT (800) 345-VOTE (8683).**

---

# IMPORTANT DATES

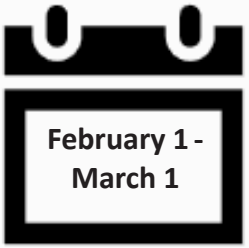


**First day you can vote.** Registered voters who have requested to receive their ballot by mail will begin receiving their ballots on this day.

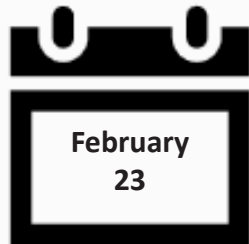


**Registration Deadline.** Check your registration status online or by calling our office.

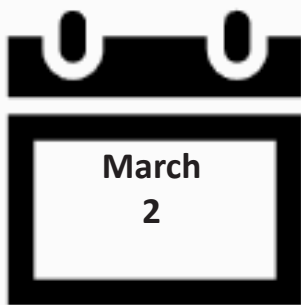
*\* The registration deadline has been extended to the next business day because the 15th day prior to the election is a state holiday.*



**Early Voting** available at the Registrar of Voters office from 8:00 a.m. - 5:00 p.m., Monday through Friday (excluding holidays).



**Last day to request a Vote-by-Mail ballot.** Complete the application on the back cover of this Voter Information Guide or contact our office to request a Vote-by-Mail ballot to be mailed to you.



## Election Day!

**Vote at your polling place or mail in or drop off your Vote-by-Mail ballot by today!**

Polling places, the City Clerk's office and the Registrar of Voters office will be open from 7:00 a.m. to 8:00 p.m.

Mailed-in ballots must be postmarked by this date and received no later than March 5 to be counted.



**Do you know someone who is not registered to vote? Need to check your voter registration status?**



Check your voter registration status, update your registration information, or register to vote online. Visit [www.voteinfo.net](http://www.voteinfo.net) for more information.



Request a voter registration card be sent by mail to update your registration information, or to register to vote. Call (951) 486-7200 or (800) 773-VOTE (8683) for more information.

# Are you...

- ♦ Interested in Learning More About the Voting Process?
- ♦ Detail Oriented?
- ♦ A Team Player?
- ♦ A Problem Solver?
- ♦ Motivated to Serve Your Community?



# BE AN ELECTION OFFICER



---

We encourage individuals with bilingual skills in Spanish, Tagalog, Korean, Chinese (Cantonese/Mandarin), Vietnamese, and American Sign Language (ASL) to serve their communities as Election Officers.

**Call (951) 486-7341 or (877) 663-9906**



FROM



FIRST  
CLASS  
POSTAGE

PLACE STAMP HERE

DID YOU SIGN YOUR APPLICATION?

REGISTRAR OF VOTERS  
2724 GATEWAY DRIVE  
RIVERSIDE CA 92507-0923



## ACCOMMODATIONS FOR VOTERS WITH DISABILITIES

A "YES" or "NO" printed under the disabled symbol/arrow on the back cover of this guide indicates whether or not your nearest polling place is accessible to physically disabled voters. Please be advised of the following alternate ways you may cast your ballot.

- **By Mail** - You may request a Vote-by-Mail ballot. Simply complete the application on the back cover of this guide, or, you may contact the Registrar of Voters office by calling (951) 486-7200, (800) 773-VOTE (8683), TTY (951) 697-8966. The application must be received by the Registrar of Voters office by the deadline given. Your ballot must be received at the Registrar of Voters office no later than 8:00 p.m. on Election Day or be postmarked on or before Election Day and received no later than three days after Election Day to be counted.
- **Early Voting** - You may vote at the Registrar of Voters office located at 2720 Gateway Drive, Riverside, CA 92507, February 1 - March 1 (excluding Holidays), Monday through Friday, 8:00 a.m. to 5:00 p.m. The Registrar of Voters office will also be open Election Day, March 2, 7:00 a.m. to 8:00 p.m.
- **Remote Accessible Vote by Mail Ballot (RAVBM)** - Accessible Vote-by-Mail provides an accessible option for voters to mark their ballots privately and independently. To complete a RAVBM ballot visit [www.voteinfo.net](http://www.voteinfo.net). Your completed ballot and signed Oath of the Voter must be returned to the Registrar of Voters office no later than 8:00 p.m. on Election Day or be postmarked on or before Election Day and received no later than three days after Election Day to be counted.
- **Curbside Voting on Election Day** - If you are unable to enter the polling place due to a physical disability, you may request Curbside Voting at your assigned polling place. Curbside Voting doorbells may be available at some polling places. If you require Curbside Voting assistance you may call (877) 663-9906 before going to your assigned polling place and/or when you arrive at the facility. An Election Officer will be contacted prior to your arrival to meet you at the curb.

REGISTRAR OF VOTERS  
2724 GATEWAY DRIVE  
RIVERSIDE, CA 92507-0918



NONPROFIT  
U.S. POSTAGE  
**PAID**  
Registrar of Voters  
Riverside

## VOTE-BY-MAIL BALLOT APPLICATION

**APPLICATION MUST BE RECEIVED NO LATER THAN FEBRUARY 23, 2021.**

I hereby request a ballot for the Special Municipal Measure Election, March 2, 2021.

### PLEASE PRINT:

NAME AS REGISTERED

RESIDENCE ADDRESS AS REGISTERED

CITY STATE ZIP

I declare, under penalty of perjury, that the information provided is true and correct to the best of my knowledge.

### MAIL BALLOT TO:

ADDRESS (IF DIFFERENT)

CITY STATE ZIP

☐ ☒ Check this box to request PERMANENT VOTE-BY-MAIL status.

↓ POSTMASTER DELIVER TO ↓

**SIGNATURE  
REQUIRED**

SIGNATURE OF VOTER

DATE

33-BCov 03-02-2021

## OPT-IN TO VIEW YOUR COUNTY VOTER INFORMATION GUIDE ONLINE!

**BALLOT  
TYPE**

**VOTE EARLY**

**IT'S QUICK  
IT'S EASY  
IT'S CONVENIENT**

**GET OUT OF LINE ON ELECTION DAY!**

**VOTE-BY-MAIL**

**You can view all future  
County Voter Information Guides  
online with 24/7 access at your  
convenience.**

**It's easy and great for the  
environment.**

↓ LOCATION OF YOUR POLLING PLACE ↓

Please visit our website at [www.voteinfo.net](http://www.voteinfo.net)  
or call (951) 486-7200 or (800) 773-VOTE (8683)



ACCESS?

