



Registrar of Voters

11-Day Vote Center
Open December 3 to December 13

Vote Centers
Open Election Day, December 13
7:00 a.m. to 8:00 p.m.

Check Vote Center
Locations and Hours
at www.voteinfo.net

.....

Registration Deadline
November 28, 2022

.....

Quick • Easy • Convenient

This election, every active registered voter will automatically receive a Vote-by-Mail ballot in the mail.

Additional Information Inside

.....

Request Language Assistance

Submit form on Back Cover to receive election material translated in available selected languages.

AVISO IMPORTANTE

Una traducción en Español de esta Guía de Información del Condado Para el Votante puede obtenerse en la oficina del Registro de Votantes llamando al (951) 486- 7200 o (800) 773-VOTE (8683) o visite nuestro sitio web www.voteinfo.net

CITY OF BANNING
RECALL ELECTION

Tuesday, December 13, 2022
County Voter Information Guide



COUNTY OF RIVERSIDE REGISTRAR OF VOTERS
2720 Gateway Drive, Riverside, CA 92507-0918
(951) 486-7200 • (800) 773-VOTE (8683) • California Relay Service (Dial 711)
Mailing Address: 2724 Gateway Drive, Riverside, CA 92507-0918
www.voteinfo.net

THIS ELECTION VOTING IS DIFFERENT



VOTE-BY-MAIL

Vote at home using your Vote-By-Mail ballot

No Postage Required

Quick, easy, convenient...

from the comfort of your home!

OR

BALLOT DROP-OFF LOCATION

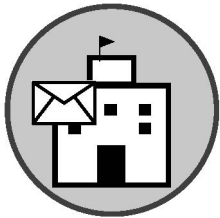
at the Registrar of Voters Office, at a Ballot Drop-Off location, or at the Banning City Clerk's Office



No Postage Required

See inside...

for Drop-Off locations and hours of operation in Riverside County!



VOTE CENTER

Vote in-person at Vote Center located in the City of Banning

Election Day, December 13, 7:00 a.m. to 8:00 p.m.

See inside...

for Vote Center locations and hours of operation in Riverside County!

For more information visit www.voteinfo.net
or call (951) 486-7200 or (800) 773-VOTE (8683)

REBECCA SPENCER
Registrar of Voters



ART TINOCO
Assistant Registrar of Voters

REGISTRAR OF VOTERS
COUNTY OF RIVERSIDE

Dear Riverside County Voter,

Election Day is December 13, 2022. This County Voter Information Guide provides ballot marking instructions, candidate information and other important election information that you should review before you vote. You may mark your selections on your Sample Ballot and take it with you to any Vote Center for easy reference. Each eligible registered voter for the December 13, 2022, City of Banning Recall Election will receive a ballot by mail beginning Monday, November 14, 2022.

Voters can verify their voter registration at voterstatus.sos.ca.gov or register to vote at registertovote.ca.gov.

- Your Vote-by-Mail ballot may be returned at any secure Ballot Drop-off location that will be available beginning November 14, 2022, or via USPS (no postage required).
- You may drop off your voted ballot at any designated Ballot Drop-off location or Vote Center in Riverside County before Election Day. Please visit www.voteinfo.net for a list of participating locations and hours, or you may call our office at the numbers listed.
- For your ballot to count, it must be in the possession of the Riverside County Registrar of Voters or an elections official at any Vote Center, Ballot Drop-off location, or Polling Place within the state by the close of polls on Election Day, December 13, 2022. Your ballot will also count if it is postmarked on or before Election Day and received no later than seven days after Election Day.
- You may track your ballot by registering at WheresMyBallot.sos.ca.gov.

All Vote Centers, including the Registrar of Voters office, will be open on Election Day, December 13, from 7:00 a.m. to 8:00 p.m. Please feel free to contact the Riverside County Registrar of Voters at (951) 486-7200 with any questions or concerns regarding the upcoming December 13, 2022, City of Banning Recall Election.

Thank you for your continued participation and support in making democracy work.

Sincerely,

REBECCA SPENCER
Registrar of Voters

VOTE CENTER LOCATIONS

Sun Lakes Country Club
Main Clubhouse
850 Country Club Drive
Banning, CA 92220
December 3 – December 12
9:00 a.m. to 5:00 p.m.
Election Day, December 13
7:00 a.m. to 8:00 p.m.

Riverside County Registrar of Voters
2720 Gateway Drive
Riverside, CA 92507
November 14 – December 12
Monday – Friday (excluding Holidays)
8:00 a.m. to 5:00 p.m.
December 3 – December 4
9:00 a.m. to 5:00 p.m.
December 10 – December 11
9:00 a.m. to 5:00 p.m.
Election Day, December 13
7:00 a.m. to 8:00 p.m.

BALLOT DROP-OFF LOCATIONS

Sun Lakes Country Club
850 Country Club Drive
Banning, CA 92220
November 14 – December 2 (excluding Holidays)
Monday – Friday
10:00 a.m. to 3:00 p.m.

Riverside County Registrar of Voters
2720 Gateway Drive
Riverside, CA 92507
November 14 – December 2 (excluding Holidays)
Monday – Friday
8:00 a.m. to 5:00 p.m.

City of Banning
99 E. Ramsey Street
Banning, CA 92220
During regular city business hours

CAN'T MAKE IT ON ELECTION DAY?
WE'RE MAKING IT EASY TO VOTE EARLY



AT THE REGISTRAR OF VOTERS OFFICE
2720 Gateway Drive, Riverside, CA 92507

November 14 through December 12
Monday through Friday
8:00 a.m. to 5:00 p.m.

December 3 through December 4
9:00 a.m. to 5:00 p.m.

December 10 through December 11
9:00 a.m. to 5:00 p.m.

Election Day, December 13
7:00 a.m. to 8:00 p.m.

VOTE-BY-MAIL

All eligible registered voters in Riverside County for the December 13, 2022, City of Banning Recall Election will receive a ballot by mail beginning Monday, November 14, 2022. Return your Vote-by-Mail ballot by mail or at the following locations:

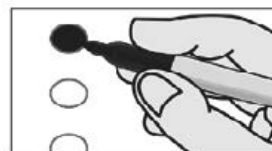
★ ★ ★ ★ ★	★ ★ ★ ★ ★	★ ★ ★ ★ ★
<u>Registrar of Voters</u> 2720 Gateway Drive Riverside, CA 92507 November 14 – December 12 Monday - Friday 8:00 a.m. – 5:00 p.m. December 3 – December 4 9:00 a.m. to 5:00 p.m. December 10 – December 11 9:00 a.m. to 5:00 p.m. Election Day, December 13 7:00 a.m. – 8:00 p.m.	<u>Ballot Drop-Off Locations</u> November 14 – December 12 Dates, Locations, and Hours Vary All Drop-Off Locations Open Election Day, December 13 7:00 a.m. to 8:00 p.m. Registrar of Voters Secure drop box 24 hours a day See the list of locations and hours online at www.voteinfo.net	<u>Vote Center</u> Dates, Locations, and Hours Vary 11 - Day Vote Center Open December 3 to December 13 All Vote Centers Open Election Day, December 13 7:00 a.m. – 8:00 p.m. See the list of locations and hours online at www.voteinfo.net

HOW TO MARK YOUR OFFICIAL PAPER BALLOT

Please refer to the following instructions on how to properly complete your Official Paper Ballot:

- Completely fill in the oval next to your choice like the example provided.
- Check both front and back of ballot for voting contests.
- Use a black ink pen or marker. Do not use red ink.
- Completely filling in the oval is preferred.
- Vote for no more than the number of votes allowed in each contest (e.g., vote for one, vote for no more than two, etc.).
- Please keep the Vote-by-Mail ballot folded the same way as you received it.

TO MARK YOUR VOTE FILL IN THE OVAL



VOTE!!!

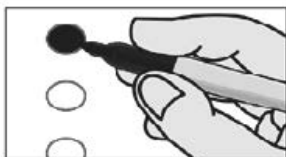
IMPORTANT NOTE!

You must fill out and sign the return envelope
for your Vote-by-Mail ballot to be counted.

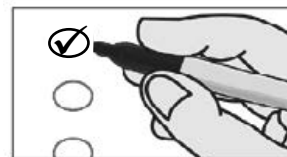
MAKE YOUR VOTE COUNT...MARK YOUR BALLOT CORRECTLY

EXAMPLE

CORRECT



INCORRECT



For a demonstration on marking your ballot, please visit our website at www.voteinfo.net

SAMPLE BALLOT / BOLETA EJEMPLAR

BT-1

CITY OF BANNING RECALL ELECTION

ELECCIÓN DE DESTITUCIÓN DE LA CIUDAD DE BANNING

December 13, 2022 / 13 de diciembre de 2022

Mark your choices on your sample ballot, then refer to it when you vote
Marque sus opciones en su boleta ejemplar, luego, refiérase a esta cuando esté votando



Instructions to Voters: To vote on the recall question, mark the voting target next to the word "YES" or "NO". To vote for a candidate whose name appears on the ballot, mark the voting target next to the candidate's name. To vote for a qualified write-in candidate, write the person's name in the blank space provided for that purpose after the names of the other candidates for the same office and mark the voting target next to the write-in space. Use a black ink pen or marker to mark your ballot. DO NOT USE RED INK.



Instrucciones para los Votantes: Para votar ante la pregunta de destitución, marque su preferencia de votación junto a la palabra "SI" o "NO". Para votar por un candidato cuyo nombre aparece en la boleta, marque su preferencia de votación junto al nombre del candidato. Para votar por un candidato calificado, escriba el nombre de la persona en el espacio en blanco previsto para ese propósito después de los nombres de los otros candidatos para el mismo cargo y marque su preferencia de votación junto al espacio en blanco. Use un bolígrafo o marcador de tinta negra para marcar su boleta. NO USE TINTA ROJA.

NONPARTISAN OFFICES CARGOS NO PARTIDARIOS

CITY CIUDAD

CITY OF BANNING CIUDAD DE BANNING

Shall MARY HAMLIN be recalled (removed) from the office of
Member, City Council, District 3?

¿Debería ser destituida (removida) MARY HAMLIN del cargo
de Miembro, Concejo Municipal, Distrito 3?

YES / SÍ

☐

NO / NO

☐

Candidates to succeed MARY HAMLIN as
Member, City Council, District 3 if she is recalled:

Candidatos a suceder a MARY HAMLIN como
Miembro, Concejo Municipal, Distrito 3 si fuera destituida:

Vote for One / Vote por Uno

MICHELE WALTER

Community Awareness Coordinator
Coordinadora de Sensibilización Comunitaria

☐

SHERI FLYNN

Retired Medical Technologist
Tecnóloga Médica Jubilada

☐☐

VOTER'S INFORMATION GUIDE SECTION

The following pages contain voter information applicable to your ballot which may include the following items:

- STATEMENT OF REASONS FOR RECALL
- ANSWER TO STATEMENT OF REASONS FOR RECALL
- CANDIDATE STATEMENTS

This guide section may not contain a complete list of candidates. A complete list of candidates appears on the Sample Ballot section of this guide. Each candidate's statement in this guide is volunteered by the candidate and is printed at the expense of the candidate unless otherwise determined by the governing body. Deposit amounts required for publication of candidate statements are listed in the Candidate Handbook at www.voteinfo.net. Additional candidate statements may be available and viewed at www.voteinfo.net.

Statements made on the following pages represent the views of the authors and are not endorsed by the County of Riverside. Internet website addresses included in any statements are provided by the authors. The County of Riverside assumes no liability for the accuracy or content of websites listed therein.

The text, grammar, and spelling are as submitted by the authors.

VOTE CENTER REMINDER NO ELECTIONEERING!



All electioneering, voter solicitation, etc. is prohibited within 100 feet in any direction of the room where voters are casting ballots.

Avoid wearing or displaying campaign buttons, hats, t-shirts, and other political items.

CALIFORNIA ELECTIONS CODE §§18370, 18371

**STATEMENT OF REASONS FOR RECALL
FILED BY PROPONENTS SEEKING THE RECALL OF
MARY HAMLIN
FROM THE OFFICE OF
CITY COUNCIL MEMBER, CITY OF BANNING, DISTRICT 3**

Councilwoman Hamlin:

- Approved the Banning Point Warehouse in December 2020, and subsequently cast a hollow “no” vote on a later modified cold storage warehouse in a blatant political move to preserve her council seat. She made no effort to persuade her Council colleagues to respect the overwhelming objections to the warehouse of her District 3 constituents. Nor did she make an effort to reinforce that the record before the Council did not support approval of the project.
- Ignored the Manual of Procedural Guidelines, along with lengthy public comment against Marco Santana’s removal from the Planning Commission due to perceived bias, while brazenly refusing to recuse herself when her own pro-warehouse bias was exposed.
- Has no problem placing industrial warehouses directly across and adjacent to senior citizens who reside in the Sun Lakes community. Industrial warehouses do not belong in residential areas.
- Has failed to represent and protect the health, safety, property values, and interests of District 3.
- Has failed in her fiduciary duty of care and loyalty, to act lawfully and in good faith, and to serve, inform, and protect her constituents. She had the responsibility of understanding what she was voting for and she failed to do so.

PROPONENTS:

Diane Berley
Randel Robbins
James Moran
Janet Flammang
Robert L. Messier
John Swen
Lyndon Taylor
Howard Katz
Jeannie Lloyd
Bruce L. Brown
Sheri Flynn
Annette Tringham
Virginia E. Cervantes

Cindy Medley
Delores Daugherty
Michael Daugherty
Tracy E. Mahoney
William J. Hobbs
Beverly Rashidd
Jean Dobson

**ANSWER TO STATEMENT OF REASONS FOR RECALL OF
CITY COUNCIL MEMBER, MARY HAMLIN**

I've been a proud resident of Sun Lakes for 15 years and am honored to represent the citizens of the 3rd district on the Banning City Council.

As your councilperson, being accessible and accountable to you are my priorities. That is why I provide regular updates to the community, share my personal cell phone number, and why I voted against the Banning Point project.

Recalls are negative and divisive for our community and the City of Banning. That's why I'm NOT in favor of wasting tax payer dollars or Sun Lakes Homeowner Association dues pursuing personal agendas that don't benefit our community. I will continue to support programs and projects that improve our City and move it forward and I'll oppose those that don't.

As your councilperson, I'm a member of the Riverside County Transportation Commission fighting to ensure we get our share of transportation improvements. I'm the founder and CEO of the Pass Job Connection and a member of Faith in Action, an organization that supports transitional housing for the homeless of our area. Everything I do is aimed to make our community safer, cleaner, and economically stronger.

Let's go forward not backwards. Vote NO on the recall.

/s/ Mary L. Hamlin

NO STATEMENT OF OFFICER BEING RECALLED FILED

**CANDIDATE STATEMENT FOR
CITY COUNCIL MEMBER,
CITY OF BANNING, DISTRICT 3**

L. MICHELE WALTER

OCCUPATION: Community Awareness Coordinator

EDUCATION AND QUALIFICATIONS:

My name is Michele Walter and I would be honored to serve you on the City Council. I have lived in Sun Lakes for 19 years. I have been married for 49 years; have 4 children, 14 grandchildren and 2 great grandchildren.

With my community experience, ability and calm demeanor I will successfully address our concerns while representing you on the City Council. I have the people skills needed to develop professional relationships with other council members in order to accomplish our community objectives. We need leadership who is willing to listen, be transparent and inclusive to all.

Experience and Community Involvement

- Branch manager for First Financial Federal Credit Union
- Past treasurer of American Business Women's Association
- Past treasurer for Sun Lakes LEGS and Tennis Club
- Past district 17 delegate
- Founded and coordinated the YAH club for 17 years
- Past chairperson Charity Week Fashion Show
- Proposed, implemented and current coordinator of The Community Awareness Program
- Participated and protested against Banning Pointe Warehouse Project

If elected I will address:

- NO warehouses in residential areas
- Safety/security/homeless and increase BPD patrol
- City water mandates/restrictions
- Oppose excessive water rate/electric increases
- Infrastructure/traffic congestion/access to SLCC/ proposed BLVD. expansion

**CANDIDATE STATEMENT FOR
CITY COUNCIL MEMBER,
CITY OF BANNING, DISTRICT 3**

SHERI FLYNN

AGE: 63

OCCUPATION: Community Activist / Pass Action Group Vice President / Licensed Clinical Laboratory Scientist

EDUCATION AND QUALIFICATIONS:

- Board Member, Vice President, and Co-Chair of the Legal/ Environmental Impact Committee for the Pass Action Group fighting the City's improper and biased action to approve the Banning Point Warehouse.
- Led and executed the necessary and successful petition drive to recall Mary Hamlin.
- Advocated for District 3 and Banning's best interests by attending and speaking at multiple City Council, Planning Commission, and Townhall Meetings.
- Community Activist, Anaheim Hills- Led successful fight to redirect the misuse of Mello-Roos funds resulting in 2 new elementary schools, a police substation, community center, and a neighborhood park.
- HOA President- The Highlands Maintenance Corporation, Anaheim Hills- Successfully ran 2,300 home multimillion dollar corporation for 6 years.
- BS Degree, Microbiology, Minor in Chemistry, California Polytechnic University, Pomona, 1983.
- AA degree, Medical Laboratory Technology, Santiago Community College, 2012.
- Raised 3 successful college educated children.

I will provide strong, decisive leadership and a long range vision to move Banning forward. For too long Banning has suffered from mismanagement, self-dealing, blight, and a lack of cohesiveness. I will not approve or allow any warehouses to be located in residential communities. My goal is to set Banning back on a path of progress, fiscal responsibility, transparency, and regeneration. I respectfully ask for your vote to serve our great community.

Riverside, California



Same Day Voter Registration



Did you forget to register or update your voter registration? No Problem! You can register to vote and vote until 8:00 p.m. on Election Day at the Registrar of Voters office or at any Vote Center. This process is called Conditional Voter Registration (CVR) and is commonly referred to as Same Day Voter Registration. Here's how it works:

1. Visit the Registrar of Voters office or a Voter Center in Riverside County which can be found in the County Voter Information Guide or at voteinfo.net.
2. Complete a voter registration card or register online at RegisterToVote.ca.gov.
3. Vote your ballot.
4. Once the Registrar of Voters processes your registration, and determines you are eligible, you will be registered to vote and your ballot will be counted.

To learn more about Same Day Voter Registration, visit sos.ca.gov/elections/voter-registration/same-day-reg.

If you have questions regarding Same Day Voter Registration, please call (951) 486-7200 or toll free (800) 773-VOTE (8683).

You may check the status of your voter registration at www.voteinfo.net/AmIRegistered.



California Motor Voter



The California Motor Voter program is making registering to vote at the California Department of Motor Vehicles (DMV) more convenient and secure. All eligible individuals completing driver's license or ID card or change of address transactions at the DMV will be registered to vote with the California Secretary of State unless they "opt out" of automatic voter registration.

The California Motor Voter program applies to Californians who are 18 years or older and meet the following criteria:

- A United States citizen and a resident of California.
- Not currently serving in a state or federal prison for the conviction of a felony.
- Not currently found mentally incompetent to vote by a court.

Note: Voter pre-registration is available for those 16 and 17 years of age. Their voter registration will become active automatically when they turn 18.

Before visiting a DMV field office, we recommend making an appointment. Visit <https://www.dmv.ca.gov/portal/dmv/detail/portal/foa/welcome> to get started. You can also use DMV online services (<https://www.dmv.ca.gov/portal/dmv/dmv/onlinecvcs>) to renew your driver's license or ID card or change your address.

If you indicate you're eligible to vote, once you complete your driver's license or state ID renewal form transaction online, by mail or in person at the DMV, your voter information is then transmitted securely and electronically to the California Secretary of State.

Please note that drivers with an AB 60 driver's license are not eligible to participate in the California Motor Voter program and are not eligible to vote.

For more information, visit MotorVoter.sos.ca.gov.

To register to vote online, visit RegisterToVote.ca.gov.

Remote Accessible Vote-by-Mail (RAVBM) in Riverside County

For the December 13, 2022, City of Banning Recall Election, all voters will receive a ballot in the mail. Riverside County will begin mailing voters their ballots on November 14th.

You can also vote with Remote Accessible Vote-by-Mail. RAVBM lets you:

- Download, mark, and print your ballot at home
- Use your own assistive technology to read and mark the ballot
- Select the language for your ballot

RAVBM is not “internet voting.” You must print and return your marked ballot.



You must request your RAVBM ballot by December 6th

How to vote from home (accessibly!) with RAVBM:

1. Request an RAVBM ballot access link

Contact the elections office by phone at (951) 486-7200 or (800) 773-VOTE (8683), by email at rovweb@rivco.org, or on the web at www.voteinfo.net.

2. Mark your ballot

Use the access link to open your ballot. Review and mark the ballot on your own computer, with your own assistive technology if needed.




3. Review and print your ballot

Check your ballot and make corrections. Download and print your ballot.

4. Seal and sign the ballot envelope

Put your RAVBM ballot in the envelope you received in the mail. Sign the voter's declaration (punched holes tell you where to sign). Seal the envelope.

5. Return your ballot

-  By mail. (Your envelope will include pre-paid postage!)
-  At any drop box in Riverside County.
-  At any voting location or at the Riverside County elections office.

Questions? Call Riverside County (800) 773-VOTE (8683)






For voters with disabilities:

Disability Rights California's Voting Hotline: **1 (888) 569-7955**

VOTER BILL OF RIGHTS

YOU HAVE THE FOLLOWING RIGHTS:

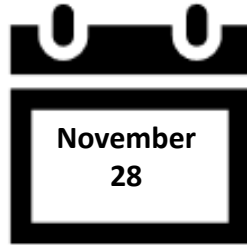
- 1** **The right to vote if you are a registered voter.** You are eligible to vote if you are:
 - a U.S. citizen living in California
 - at least 18 years old
 - registered where you currently live
 - not currently serving a state or federal prison term for the conviction of a felony, and
 - not currently found mentally incompetent to vote by a court
- 2** **The right to vote if you are a registered voter even if your name is not on the list.** You will vote using a provisional ballot. Your vote will be counted if elections officials determine that you are eligible to vote.
- 3** **The right to vote if you are still in line when the polls close.**
- 4** **The right to cast a secret ballot** without anyone bothering you or telling you how to vote.
- 5** **The right to get a new ballot if you have made a mistake,** if you have not already cast your ballot. You can:
 - Ask an elections official at a polling place** for a new ballot,
 - Exchange your vote-by-mail ballot** for a new one at an elections office, or at your polling place, or
 - Vote using a provisional ballot.**
- 6** **The right to get help casting your ballot** from anyone you choose, except from your employer or union representative.
- 7** **The right to drop off your completed vote-by-mail ballot at any polling place** in California.
- 8** **The right to get election materials in a language other than English** if enough people in your voting precinct speak that language.
- 9** **The right to ask questions to elections officials about election procedures** and watch the election process. If the person you ask cannot answer your questions, they must send you to the right person for an answer. If you are disruptive, they can stop answering you.
- 10** **The right to report any illegal or fraudulent election activity** to an elections official or the Secretary of State's office.
 -  On the web at www.sos.ca.gov
 -  By phone at **(800) 345-VOTE (8683)**
 -  By email at elections@sos.ca.gov

**IF YOU BELIEVE YOU HAVE BEEN DENIED ANY OF THESE RIGHTS, CALL THE SECRETARY OF STATE'S
CONFIDENTIAL TOLL-FREE VOTER HOTLINE AT (800) 345-VOTE (8683).**

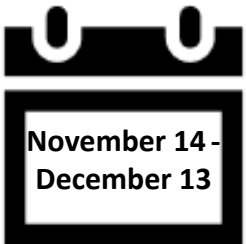
IMPORTANT DATES



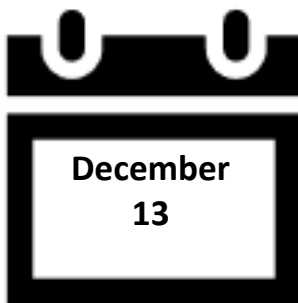
First day you can vote. Each eligible registered voter will begin receiving their ballot by mail beginning this day.



Registration Deadline. Check your registration status online or by calling our office.



More Days, More Ways to Vote! Vote early in-person at the Registrar of Voters office or 11-day **Vote Center** in the City of Banning, including Election Day. For a complete list of Vote Centers and hours of operation, please visit our website at www.voteinfo.net or call our office at (951) 486-7200.



Election Day!

Mail in or drop off your Vote-by-Mail ballot today! Mailed-in ballots must be postmarked by this date and received no later than December 20 to be counted.

In-person voting also available at any Vote Center or the Registrar of Voters office.

Ballot Drop-off locations, Vote Center and the Registrar of Voters office open from 7:00 a.m. - 8:00 p.m.



Do you know someone who is not registered to vote? Need to check your voter registration status?



Check your voter registration status, update your registration information, or register to vote online. Visit www.voteinfo.net for more information.



Request a voter registration card be sent by mail to update your registration information, or to register to vote. Call (951) 486-7200 or (800) 773-VOTE (8683) for more information.

FROM



FIRST
CLASS
POSTAGE

PLACE STAMP HERE

DID YOU SIGN YOUR REQUEST?

REGISTRAR OF VOTERS
2724 GATEWAY DRIVE
RIVERSIDE CA 92507-0923



ACCOMMODATIONS FOR VOTERS WITH DISABILITIES

All Vote Centers are accessible to voters who are physically disabled. Please be advised of the following alternate ways you may cast your ballot.

- **By Mail** - Your ballot must be received at the Registrar of Voters office no later than 8:00 p.m. on Election Day or be postmarked on or before Election Day and received no later than seven days after Election Day to be counted. You may request a Vote-by-Mail ballot for all future Elections. Simply contact the Registrar of Voters office by calling (951) 486-7200, (800) 773-VOTE (8683), California Relay Service (Dial 711).
- **Early Voting** - You may vote at the Registrar of Voters office November 14 - December 12, Monday through Friday, 8:00 a.m. to 5:00 p.m.; December 3 - December 4, 9:00 a.m. to 5:00 p.m., and December 10 - December 11, 9:00 a.m. to 5:00 p.m.; and Election Day, December 13, 7:00 a.m. to 8:00 p.m. Please visit our website at www.voteinfo.net for additional early voting locations and information.
- **Remote Accessible Vote by Mail Ballot (RAVBM)** - Accessible Vote-by-Mail provides an accessible option for voters to mark their ballots privately and independently. To complete a RAVBM ballot visit www.voteinfo.net. Your completed ballot and signed Oath of the Voter must be returned to the Registrar of Voters office no later than 8:00 p.m. on Election Day or be postmarked on or before Election Day and received no later than seven days after Election Day to be counted.
- **Curbside Voting on Election Day** - If you are unable to enter the location due to a physical disability, you may request Curbside Voting at any Vote Center. Curbside Voting doorbells and signs are available at all Vote Centers. If you require Curbside Voting assistance you may call (877) 663-9906 before going to a Vote Center and/or when you arrive at the facility. An Election Officer will be contacted prior to your arrival to meet you at the curb.

REGISTRAR OF VOTERS
2724 GATEWAY DRIVE
RIVERSIDE, CA 92507-0918



NONPROFIT
U.S. POSTAGE
PAID
Registrar of Voters
Riverside

REQUEST TRANSLATED ELECTION MATERIAL
VOTER INFORMATION:

NAME AS REGISTERED

RESIDENCE ADDRESS AS REGISTERED

CITY STATE ZIP

MAIL MATERIALS TO:

ADDRESS (IF DIFFERENT)

CITY STATE ZIP

I declare, under penalty of perjury, that the information provided is true and correct to the best of my knowledge.

**SIGNATURE
REQUIRED**

SIGNATURE OF VOTER

DATE

33-BCov 12-13-2022

Translated election materials are available for select precincts. If you would like to receive materials in another language, complete and return this postcard to the Registrar of Voters office. Translated materials will also be available at the Registrar of Voters office and at all Vote Centers.

I wish to receive election materials in:

☐ Español-Spanish

I wish to receive translated reference ballots in: (select one only)

☐ 한국어 - Korean

☐ Tiếng Việt - Vietnamese

☐ Tagalog - Tagalog

☐ 中文 - Chinese

↓ POSTMASTER DELIVER TO ↓

**OPT-IN TO VIEW YOUR
COUNTY VOTER INFORMATION
GUIDE ONLINE!**

**You can view all future
County Voter Information Guides
online with 24/7 access at your
convenience.**

**It's easy and great for the
environment.**

Please visit our website at www.voteinfo.net
or call (951) 486-7200 or (800) 773-VOTE (8683)

**BALLOT
TYPE**

VOTE EARLY

IT'S QUICK

IT'S EASY

IT'S CONVENIENT

GET OUT OF LINE ON ELECTION DAY!

VOTE-BY-MAIL

↓ LOCATION OF YOUR VOTE CENTER ↓



ACCESS?

