



CITY OF BLYTHE

235 North Broadway • Blythe, California 92225
Phone (760) 922-6161 • Fax 760-922-4938

Dear City of Blythe Voter:

On May 5, 2020, the City of Blythe will conduct an election for the purpose of the consideration of Measure K, a 1%, or one cent, transactions and use (sales) tax. All ballots for this election will be cast by mail-in ballot – there will be no polling places on Election Day. The Riverside County Registrar of Voters will conduct this election for the City of Blythe. All ballots will be mailed, received and counted by the Registrar's Office. Postage-paid envelopes will be provided for mailed ballot return. Residents are encouraged to vote early! It is important to ensure that the back of the return envelope is signed by the voter before mailing. Unsigned ballots will not be counted.

You may also drop off Ballots at Blythe City Hall, located at 235 N. Broadway Blythe, CA 92225. City Hall is open Monday through Friday from 7:00 a.m. to 4:00 p.m. Ballots may also be dropped off at the Registrar of Voters Office, located at 2720 Gateway Drive, Riverside, CA 92507. The Registrar's Office is open Monday through Friday, 8:00 a.m. to 5:00 p.m. Both City Hall and the Registrar's Office will remain open until 8:00 p.m. on Election Day, Tuesday, May 5, 2020. Ballots must be received no later than 8:00 p.m. on Election Day (ballots postmarked on Election Day must be received no later than three days after Election Day to be counted).

The City Clerk's Office and the Registrar of Voters Office are dedicated to serving the voters of Blythe and ensuring the integrity and security of the election process. If you have any questions, please contact the City Clerk's Office at (760) 922-6161 or the Registrar of Voters Office at (800) 773-VOTE (8683) or (951) 486-7200, TTY (951) 697-8966.

Sincerely,

Mallory Crecelius
City Clerk



CITY OF BLYTHE SPECIAL MAIL BALLOT ELECTION
MAY 5, 2020

POLLING PLACES WILL NOT BE ESTABLISHED FOR THIS ELECTION.

The enclosed ballot is your **OFFICIAL BALLOT** for this election.

VOTING INSTRUCTIONS

Your voted ballot must be in the possession of the Registrar of Voters office no later than 8:00 p.m. on Election Day or be postmarked on or before Election Day and received no later than three days after Election Day to be counted.

1. Use a black ink pen or marker. **DO NOT use red ink.**
 - a. To vote for or against a measure, completely fill in the oval next to the word YES or NO for that measure.
 - b. Completely filling in the oval is preferred. Vote for no more than the number of votes allowed in each contest (e.g. vote for one, vote for no more than two, etc.). (*Important!* If you do not completely fill in the oval, your vote will not be counted.)
2. Remove the top stub and place the voted ballot card in the return envelope provided. Please keep the ballot folded the same way as you received it.
 - a. Sign your name and print your address where indicated. **If you fail to sign the envelope your vote cannot be counted;** and
 - b. Seal the envelope.
3. Return your ballot:
 - a. By mail:
 - A postage-paid envelope is provided to conveniently return your ballot by mail. Voters residing outside of the territorial limits of the United States must add postage appropriate for their current location.
 - Vote-by-Mail ballots must be postmarked on or before Election Day and received no later than three days after Election Day to be counted.
 - b. In person to:
 - The Registrar of Voters office or the Blythe City Clerk's office during regular business hours and until 8:00 p.m. on Election Day. Since this is a mail ballot election, there are **no established polling places**.
 - For your convenience the Registrar's office has a locked drop box at its entry for ballot drop off 24 hours a day.
 - c. You may verify that the Registrar of Voters has received your voted ballot by checking the return status online at www.voteinfo.net.

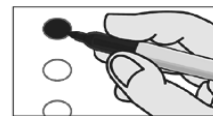
IMPORTANT INFORMATION

- **UNABLE TO RETURN YOUR BALLOT PERSONALLY?** State law allows you to authorize any individual to return your Vote-by-Mail ballot, as long as the authorized person does not receive any form of compensation based on the number of ballots returned. Have your designated representative complete the authorization statement on the enclosed return envelope.
- **SPOILED YOUR BALLOT?** Place the ballot card in the enclosed return envelope, place a check mark in the spoiled box on the return envelope and return it to our office. A new ballot will be sent to you if there is sufficient time to do so. If there is not sufficient time to return your ballot and receive another by mail, you may return your ballot personally to the Registrar of Voters office or call for further instructions at (951) 486-7200 or (800) 773-8683.
- **ACCESSIBLE VOTING UNIT.** An Accessible Voting Unit is available at the Registrar of Voters office.
- **REGISTRATION DEADLINE.** The registration deadline to vote for this election is April 20, 2020.

HOW TO MARK YOUR OFFICIAL PAPER BALLOT

- Completely fill in the oval next to your choice, like the example provided. Check both front and back of ballot for voting contests.
- Use a black ink pen or marker. Do not use red ink.
- Completely filling in the oval is preferred.
- Vote for no more than the number of votes allowed in each contest (e.g., vote for one, vote for no more than two, etc.).
- Please keep the ballot folded the same way as you received it.

TO MARK YOUR VOTE
FILL IN THE OVAL



VOTE!!!

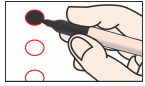
Vote First, Count First! Vote-by-Mail ballots received before Election Day are counted first. Return your ballot as soon as possible to ensure that it is included in the first Election Night results!

For a demonstration on marking your ballot visit www.voteinfo.net.
PARA ESPAÑOL, VEA EL OTRO LADO

OFFICIAL BALLOT / BOLETA OFICIAL

CITY OF BLYTHE SPECIAL MEASURE ELECTION / ELECCIÓN DE MEDIDA ESPECIAL DE LA CIUDAD DE BLYTHE RIVERSIDE COUNTY / CONDADO DE RIVERSIDE

MAY 5, 2020 / 5 DE MAYO DE 2020



Instructions to Voters: To vote, completely fill in the oval to the left of your choice, like the example to the left. Use a black ink pen or marker to mark your ballot. **DO NOT USE RED INK.**



Instrucciones a los Votantes: Para votar, completamente rellene el óvalo a la izquierda de su deseo, como el ejemplo a la izquierda. Use un bolígrafo o marcador de tinta negra para marcar su boleta. **NO USE TINTA ROJA.**

**MEASURE SUBMITTED TO THE VOTERS
MEDIDA SOMETIDA A LOS VOTANTES**

CITY / CIUDAD

**CITY OF BLYTHE
CIUDAD DE BLYTHE**

K To provide the City of Blythe with funding to maintain police and fire services, fund blight and building abatement, address homelessness, attract/retain businesses, replace aging public safety equipment, make street/pothole repairs, and fund other general services, shall the measure establishing a 1% local sales tax (transactions and use tax) that will raise approximately \$1,144,000 annually, until ended by voters, with annual independent audits and all funds remaining in Blythe, be adopted?

Para proporcionar a la Ciudad de Blythe con fondos para mantener los servicios de policía y bomberos, financiar la destrucción y la reducción de edificios abandonados, abordar la falta de vivienda, atraer/retener negocios, reemplazar equipos de seguridad pública envejecidos, hacer reparaciones en las calles/baches, y financiar otros servicios generales, ¿deberá la medida que establece el 1% de impuesto local sobre las ventas (impuesto y transacciones), que recaudará aproximadamente \$1,144,000 al año, hasta que los votantes lo finalicen, con auditorías independientes anuales y todos los fondos restantes utilizados en la Ciudad de Blythe, ser adoptada?

YES / SÍ

NO / NO

IMPARTIAL ANALYSIS OF MEASURE “K”

Measure K is an ordinance to establish a 1%, or one cent, transactions and use tax in the City of Blythe. This type of tax, commonly referred to as a “local sales tax,” is collected along with other state and local sales and use taxes. A one cent tax on a \$100.00 taxable purchase would, for example, cost the consumer \$1.00.

It is anticipated that the tax would initially generate approximately \$1.1 million in revenue annually. Proceeds of the tax would be deposited in the City’s general fund, controlled by the City Council of the City of Blythe, and available for any lawful municipal purpose. Examples of permissible uses include maintaining police and fire services, funding blight and building abatement, addressing homelessness, attracting and retaining businesses, replacing aging public safety equipment, making street and pothole repairs and providing general City services.

The proceeds of the tax would be subject to an annual audit by an independent certified public accountant. The results of the audit would be reported to the City Council and posted on the City’s website for public inspection. As required by state law, the City would contract with the California Department of Tax and Fee Administration for administration of the tax.

The combined rate of all state and local sales taxes applicable to taxable sales in the City of Blythe is currently 7.75%. Of this 7.75%, the City currently receives only 1.0%. The remaining revenues go to the state or the county or its agencies. The proposed new tax would increase the combined tax rate to 8.75%.

Purchases in Blythe that are exempt from the statewide sales tax would also be exempt from the proposed new tax. For example, most groceries, prescription drugs and purchases of services would be exempt from taxation.

If approved, the tax would remain in effect until amended or repealed by the voters.

This measure was placed on the ballot by the City Council of the City of Blythe.

A YES vote approves the measure and authorizes the proposed tax.

A NO vote rejects the measure and the proposed tax.

By: Baron J. Bettenhausen, City Attorney

The above statement is an impartial analysis of Measure K. If you desire a copy of the measure, please call the elections official’s office at (760) 922-6161 and a copy will be mailed at no cost to you.

ARGUMENT IN FAVOR OF MEASURE “K”

Measure K: Keep Our Tax Dollars Local

Vote Yes on Measure K to maintain public safety and city services that promote Blythe’s quality of life and safeguard our community.

Our City has faced significant budget shortfalls over the past 12 years because of unpreventable increases in insurance, utilities, and pensions. We have balanced our budgets through personal cuts, deferring street and park maintenance, and no longer removing dilapidated buildings. We can cut no more without severely impacting our City and quality of life.

Blythe has a substantial backlog of street maintenance and repair projects. Waiting will only make these repairs more expensive.

Blythe residents know that when we call 911, help will arrive quickly. Vote Yes on Measure K to keep it this Way!

Vote Yes on K to:

- Replace aging police and fire equipment and maintain fast emergency response times.
- Strengthen code enforcement, fund blight, and building abatement.
- Fix potholes and repave deteriorating streets.

Locally Controlled Funds for Local Needs

- The State and federal governments cannot touch one penny raised by Measure A.
- Annual audits of expenditures ensure funds are spent properly.
- Essential purchases like groceries and medicine are exempt.
- Visitors who shop in Blythe will pay their fair share.

With so much uncertainty in the federal government, Measure K is more important than ever. Measure K provides funding we control, and we can count on for vital city needs.

Measure K only adds 10 cents to a \$10 purchase — a small price to pay to keep Blythe safe, clean, and secure.

Join Blythe Police Officer’s Association, Blythe Fire Department, business people, seniors, parents, and your neighbors from across the City and vote Yes on Measure K.

Keep Our Tax Dollars Local!

By: Dale S. Reynolds, Mayor
Joshua J. Coe, Chief of Police
Kenny Kalian, Former Mayor
Ronnie Hasler, Asst. Fire Chief
David Bayles

NO ARGUMENT FILED AGAINST MEASURE “K”



Conditional Voter Registration

Effective January 1, 2017, Conditional Voter Registration is available to eligible voters in California pursuant to Election Codes 2170 through 2173.

Conditional Voter Registration (CVR) extends the existing 15-day registration deadline to eligible voters, allowing them to register and vote 14 days prior to an election through Election Day. An eligible voter would need to register directly in the office of the Riverside County Registrar of Voters, located at 2720 Gateway Drive, in Riverside, CA 92507 to conditionally register to vote and vote a provisional ballot.

Voters may register online at www.registertovote.ca.gov, however, **CVR ballots will only be issued at the office of the Registrar of Voters.**

In order to conditionally register, the voter must first complete an affidavit of registration (also known as a Voter Registration Card). Once the registration is submitted, the Registrar of Voters will issue a CVR provisional ballot to vote.

The affidavit will be processed and once the eligibility is determined and validated, the registration will become permanent and the CVR provisional ballot will be counted.

Conditional Voter Registrations are treated and processed in the same manner as other registrations; CVR provisional ballots are treated and processed the same as other provisional ballots.

If you have any questions regarding Conditional Voter Registration, please call (951) 486-7200 or toll free (800) 773-VOTE (8683).

You may check the status of your voter registration at www.voteinfo.net/AmIRegistered.

CVR was enacted in 2012, to be operative on January 1st after the certification of a statewide voter registration database. VoteCal, California's statewide voter registration database, was certified on September 26, 2016; CVR became operative as of January 1, 2017.

